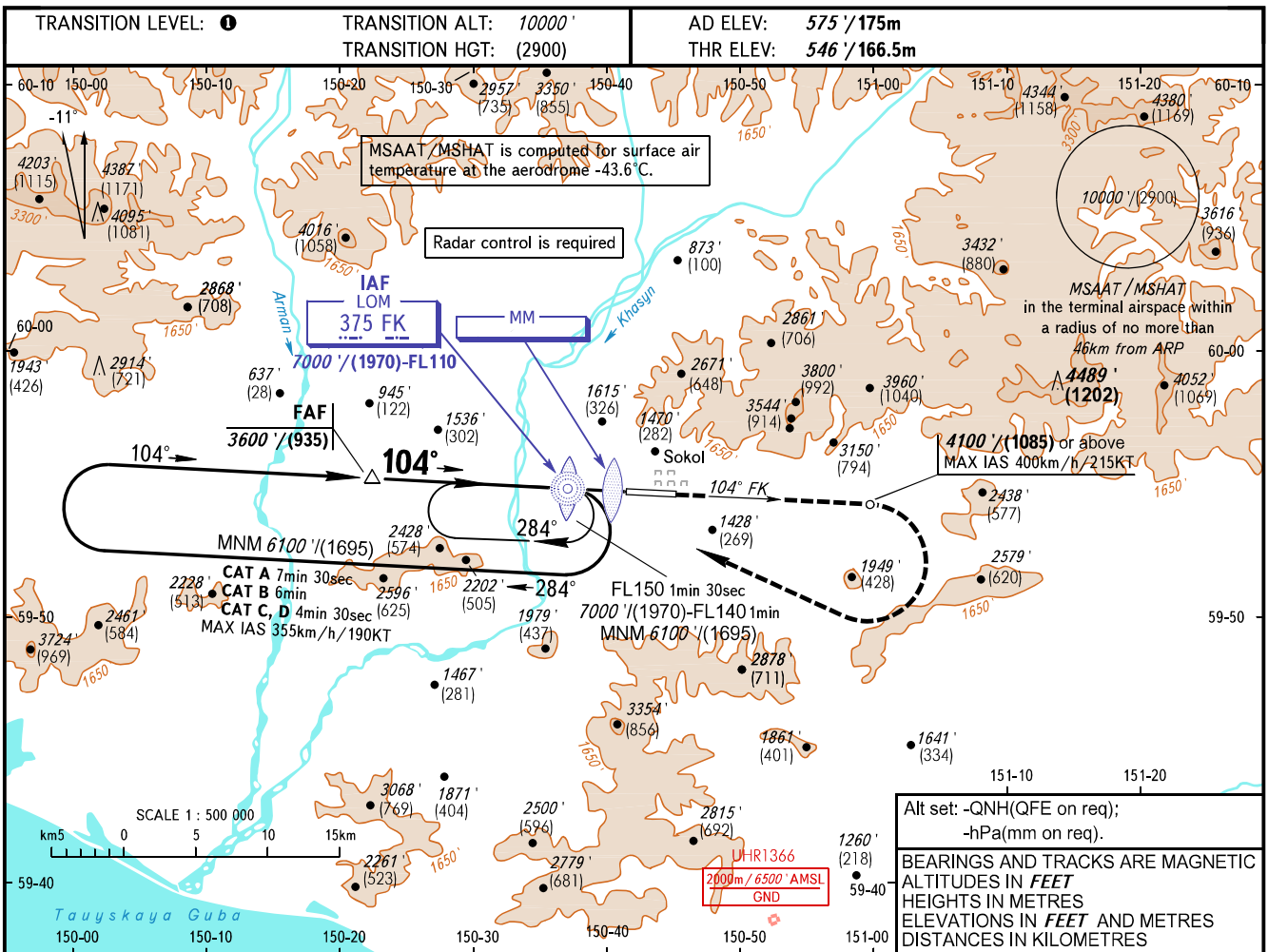


**INSTRUMENT
APPROACH
CHART - ICAO**

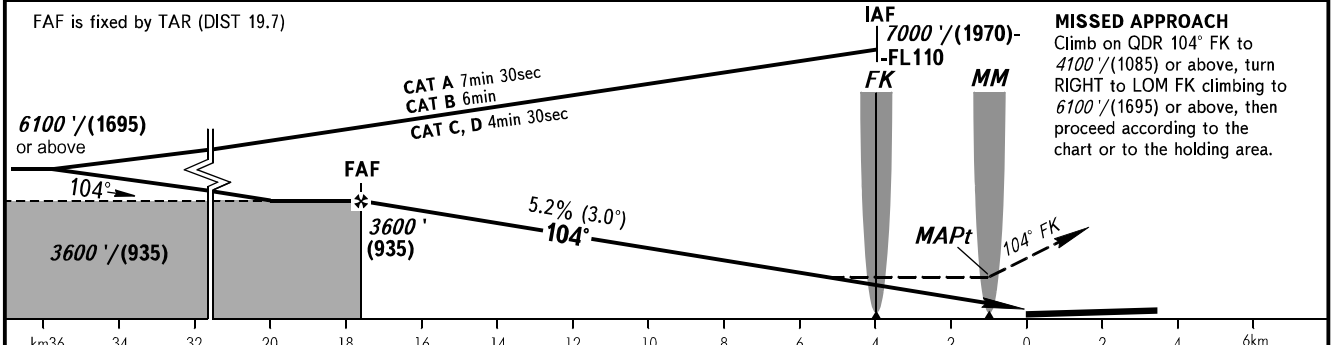
**MAGADAN, RUSSIA
SOKOL
NDB Z RWY 10**

APPROACH	119.300
TOWER	120.800



Alt set: -QNH(QFE on req);
-hPa(mm on req).

BEARINGS AND TRACKS ARE MAGNETIC
ALTITUDES IN FEET
HEIGHTS IN METRES
ELEVATIONS IN FEET AND METRES
DISTANCES IN KILOMETRES



OCA(H)		A	B	C	D	
Straight-in Approach	MNM climb gradient for missed APCH	5.0%	1330' (790') (240)	1380' (840') (255)	1430' (890') (270)	1470' (930') (285)
		2.5%	2250' (1710') (520)	2270' (1730') (530)	2290' (1750') (535)	2310' (1770') (540)
Circling		2250' (1710') (520)	2760' (2190') (670)	3420' (2850') (870)	4340' (3770') (1150)	

Visual manoeuvring to the North of AD is PROHIBITED.

TRANSITION LEVEL:

- FL110 when QNH is 1013 hPa (760mm mercury column) or above;
- FL120 when QNH is 977 hPa (733mm mercury column) or above, but less than 1013 hPa (760mm mercury column);
- FL130 when QNH is less than 977 hPa (733mm mercury column).

WARNING:

1. Missed approach climb gradient is 5.0% up to 3200' (810).
2. Turn before passing MAPt is PROHIBITED.
3. MAPt at MM. Timing not authorized for defining MAPt.

GROUND SPEED	km/h	150	180	210	240	270	300	330	360	390
	kt	81	97	113	130	146	162	178	194	211
RATE OF DESCENT	m/s	2.2	2.6	3.1	3.5	3.9	4.4	4.8	5.2	5.7
	ft/min	433	512	610	689	768	866	945	1024	1122

CHANGE: New chart