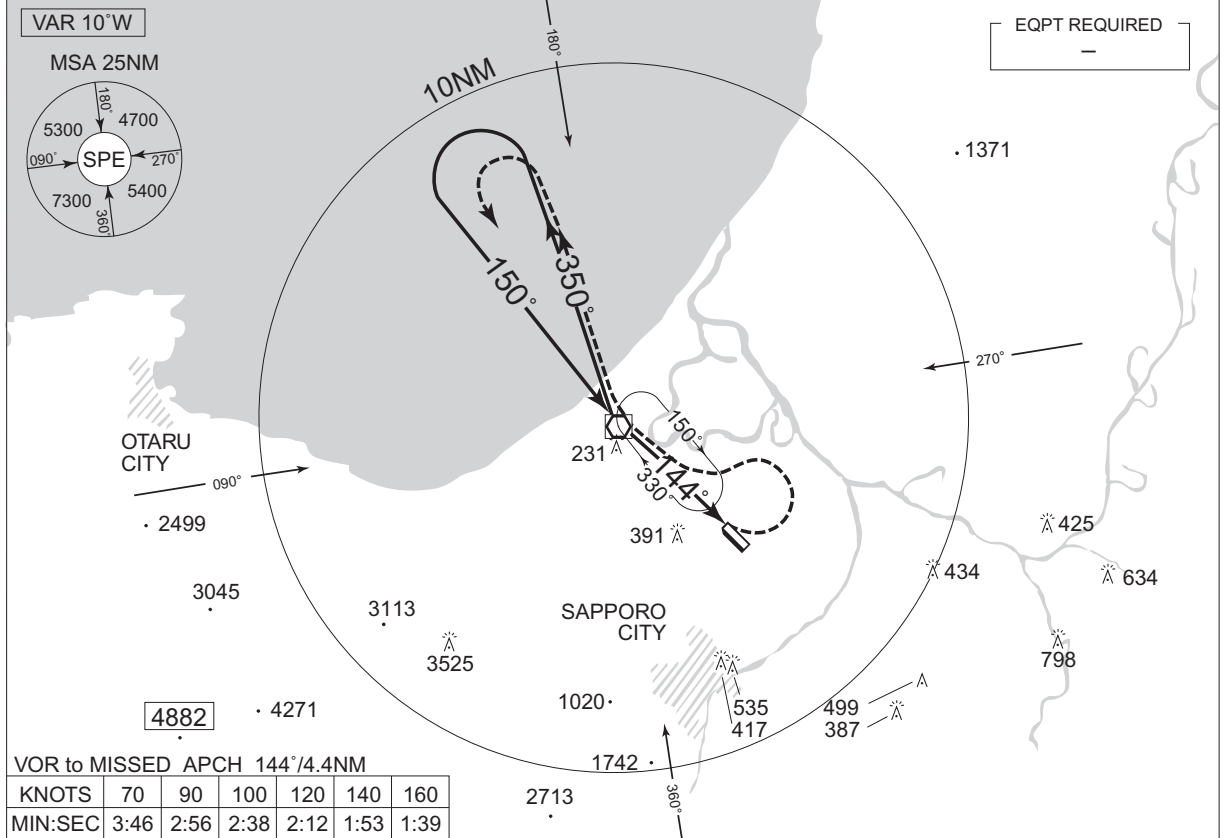


INSTRUMENT APPROACH CHART

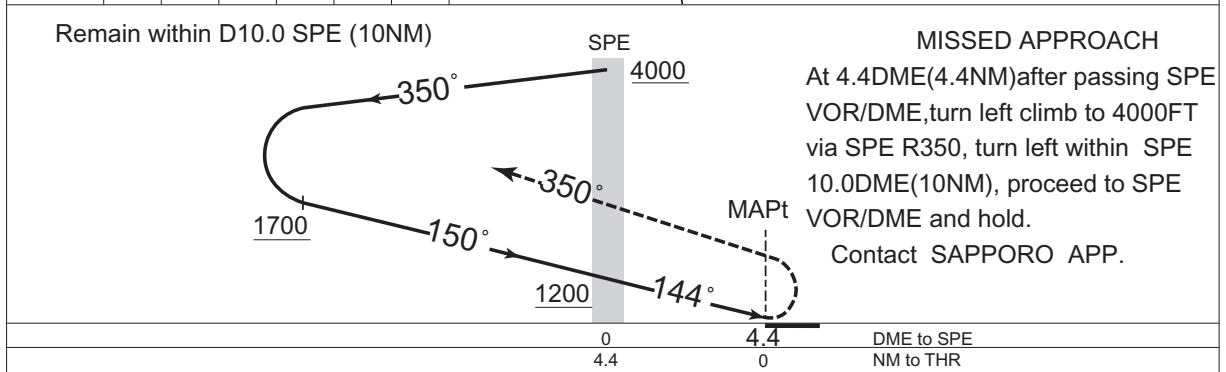
RJCO / SAPPORO

VOR RWY14

SAPPORO APP 119.225 – 121.075 315.9	SAPPORO VOR/DME 113.9 SPE CH-86X 43°10'29"N/141°18'09"E	SAPPORO TWR 118.1 – 126.2 – 140.5 138.05 – 121.8G	GCA AVBL CALL SAPPORO APP
---	--	---	---------------------------------



CHANGE : ALT restriction at Base Turn Inbound. VAR.



MINIMA		THR elev. 20	AD elev. 26	
CAT	MDA(H)		CIRCLING	
		RVR/CMV	MDA(H)	VIS
A	600 (574)	1500	600 (574)	1600
B		2000		2400
C	-	-	-	-
D	-	-	-	-

Circling to EAST side of RWY only.