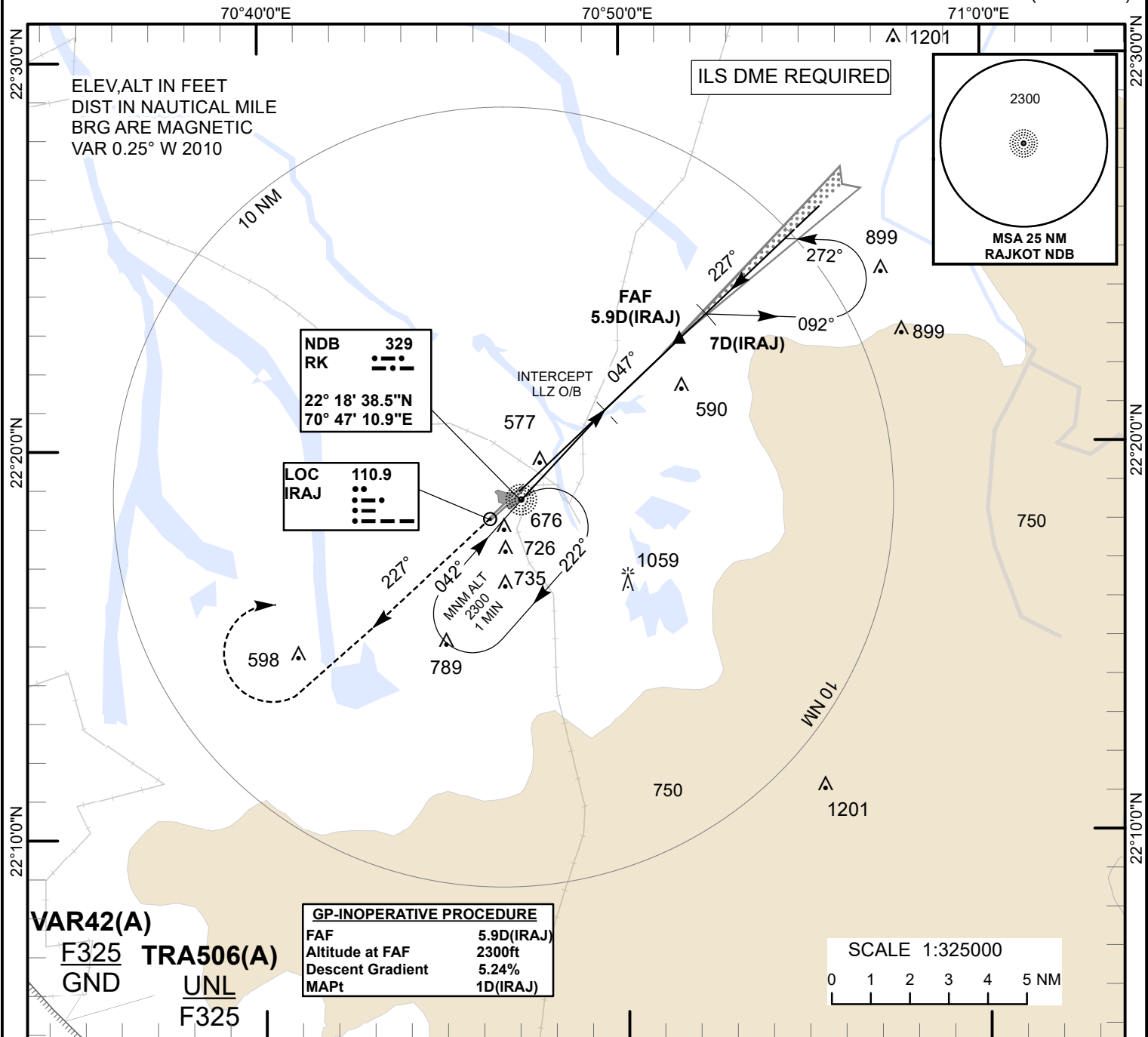


INSTRUMENT APPROACH CHART

AERODROME ELEV 443 ft
HEIGHT RELATED TO
THR RWY 23 - ELEV 426 ft

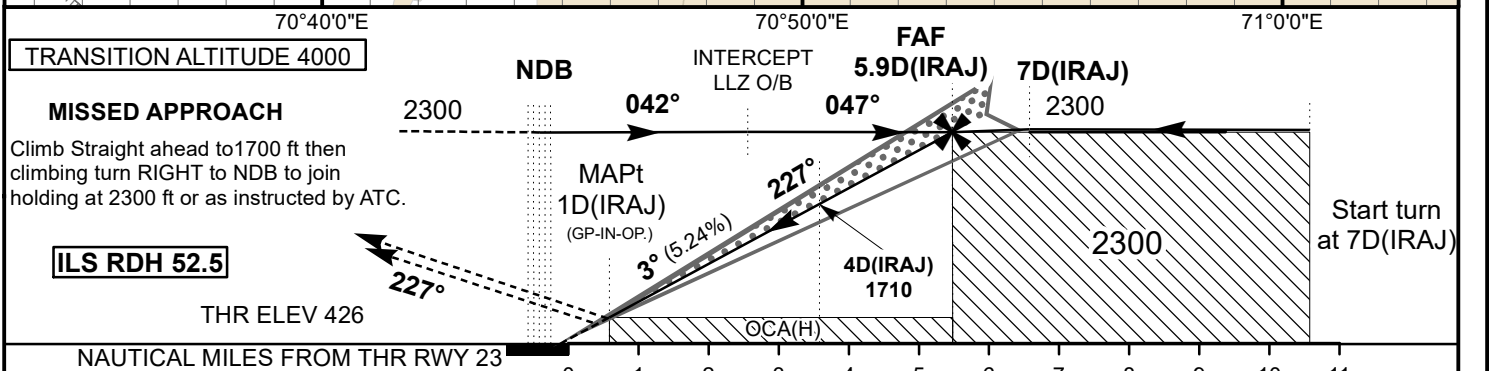
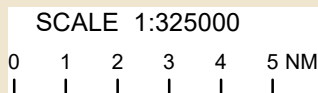
TWR 122.100

RAJKOT (VARK)
INDIA
ILS Y RWY 23
(Cat A/B/C)



VAR42(A)
F325 TRA506(A)
GND UNL
F325

GP-INOPERATIVE PROCEDURE
FAF 5.9D(IRAJ)
Altitude at FAF 2300ft
Descent Gradient 5.24%
MAPt 1D(IRAJ)



OCA(H)			Distance(IRAJ-DME)/Altitude information(GP-IN-OP.)					
CATEGORY OF AIRCRAFT	A/B	C	Distance(IRAJ-DME) (NM)	5.9D	5D	4D	3D	2D
STRAIGHT - IN	740(314)	740(314)	Altitude (ft)	2300	2030	1710	1390	1070
CIRCLING	1310(867)	1480(1037)						
GP In Operative Procedure			Rate of descent/ Ground speed information					
STRAIGHT - IN	840(414)	840(414)	Ground Speed (Kt)	80	100	120	140	160
CIRCLING	1310(867)	1480(1037)	Rate of Descent (Ft/ MIN)	425	530	635	745	850