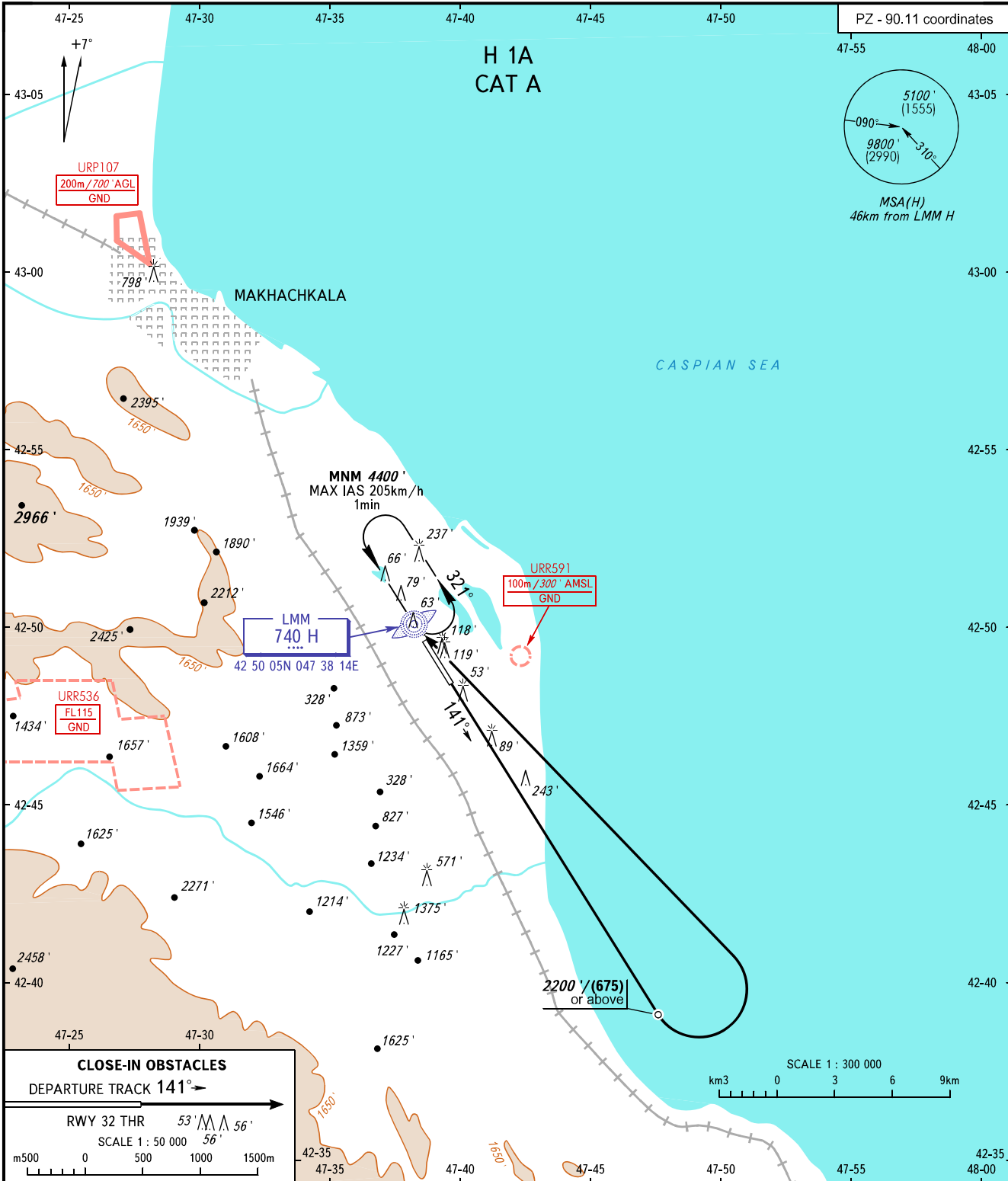


STANDARD DEPARTURE CHART  
INSTRUMENT (SID) - ICAO

TRANSITION  
ALTITUDE : 10000'

MAKHACHKALA, RUSSIA  
UYTASH  
RWY 14



**CLOSE-IN OBSTACLES**  
DEPARTURE TRACK 141°

RWY 32 THR 53' / 56'

SCALE 1 : 50 000

m 500 0 500 1000 1500m

START	121.300
RADAR	121.300
APPROACH	119.700

**WARNING:**  
1. Turn before passing DER is PROHIBITED.  
2. Radar control is required when URR536 is active.

BEARINGS AND TRACKS ARE MAGNETIC  
ALTITUDES AND ELEVATIONS IN FEET  
HEIGHTS IN METRES  
DISTANCES IN KILOMETRES

Alt set: -QNH(QFE on req);  
-hPa(mm on req).