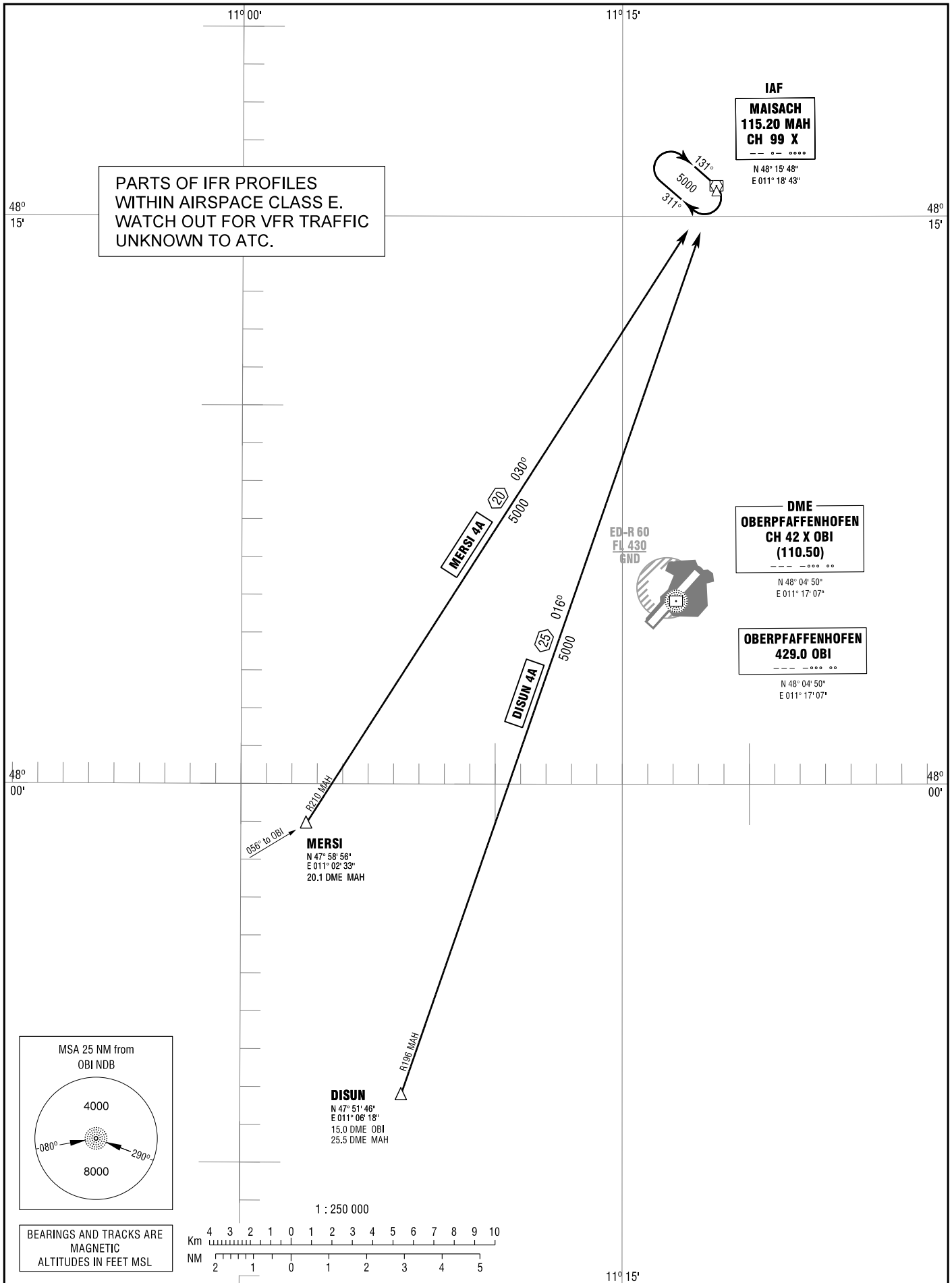


STANDARD ARRIVAL  
CHART - INSTRUMENT  
(STAR)

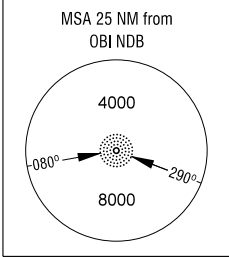
TRANSITION  
ALTITUDE 5000  
VAR 3° E

OBERPFAFFENHOFEN ATIS	126.580
MUENCHEN RADAR	127.955 (S)
MUENCHEN ARRIVAL	120.780 (S)

OBERPFAFFENHOFEN  
RWY 22



Correction: Communications.



BEARINGS AND TRACKS ARE  
MAGNETIC  
ALTITUDES IN FEET MSL

