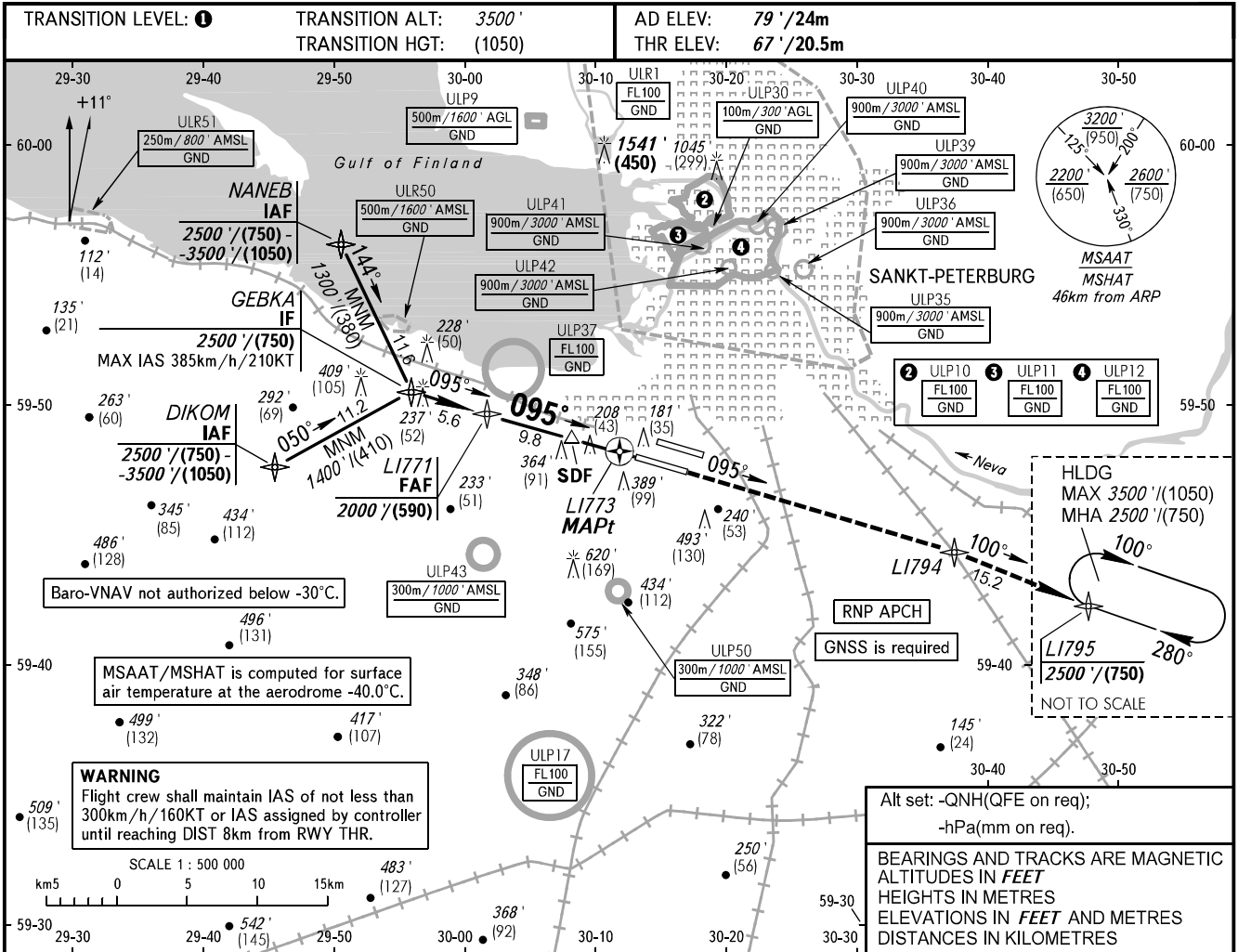


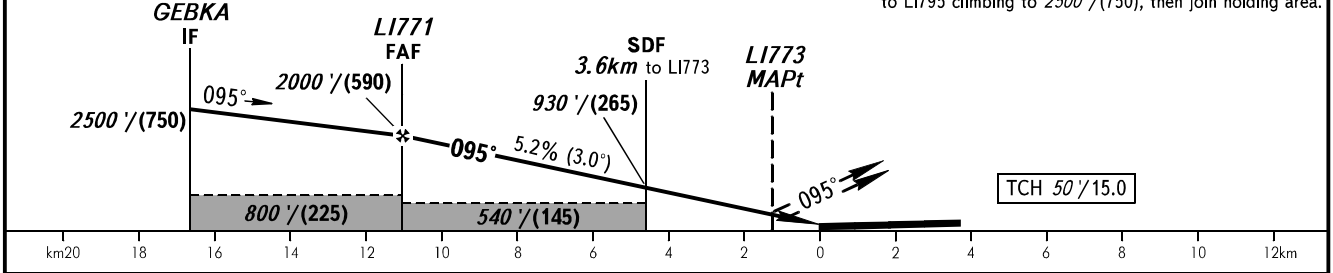
**INSTRUMENT  
APPROACH  
CHART - ICAO**

RADAR	120.300
TOWER	118.700

**SANKT-PETERBURG, RUSSIA  
PULKOVO  
RNP Z RWY 10R**



DIST to L1773	9.8	8.0	6.0	4.0	2.0
ALT/HGT	2000' / (590)	1700' / (500)	1350' / (390)	1010' / (290)	660' / (180)



OCA(H)		A	B	C	D	<b>1</b> TRANSITION LEVEL: - FL050 when QNH is 996 hPa (747mm mercury column) or above; - FL060 when QNH is 960 hPa (720mm mercury column) or above, but less than 996 hPa (747mm mercury column); - FL070 when QNH is less than 960 hPa (720mm mercury column).  <b>WARNING</b> Visual manoeuvring to the north of the AD is PROHIBITED.  <b>NOTE:</b> 1. Level flight segment is not AVBL before FAF. 2. MAPt at L1773. Timing not authorized for defining MAPt.				
Straight-in	LNAV/VNAV	320' (260') (80)	330' (270') (85)	340' (280') (85)	350' (290') (90)					
	Approach	LNAV	460' (400') (125)	460' (400') (125)	460' (400') (125)	460' (400') (125)				
Circling		690' (610') (190)	790' (710') (220)	890' (810') (250)	1020' (940') (290)					
GROUND SPEED	km/h	150	180	210	240	270	300	330	360	390
RATE OF DESCENT	kt	80	100	110	130	145	160	180	195	210
	m/s	2.2	2.6	3.1	3.5	3.9	4.4	4.8	5.2	5.7
	ft/min	430	516	602	688	774	860	946	1032	1118

CHANGE: WARNING