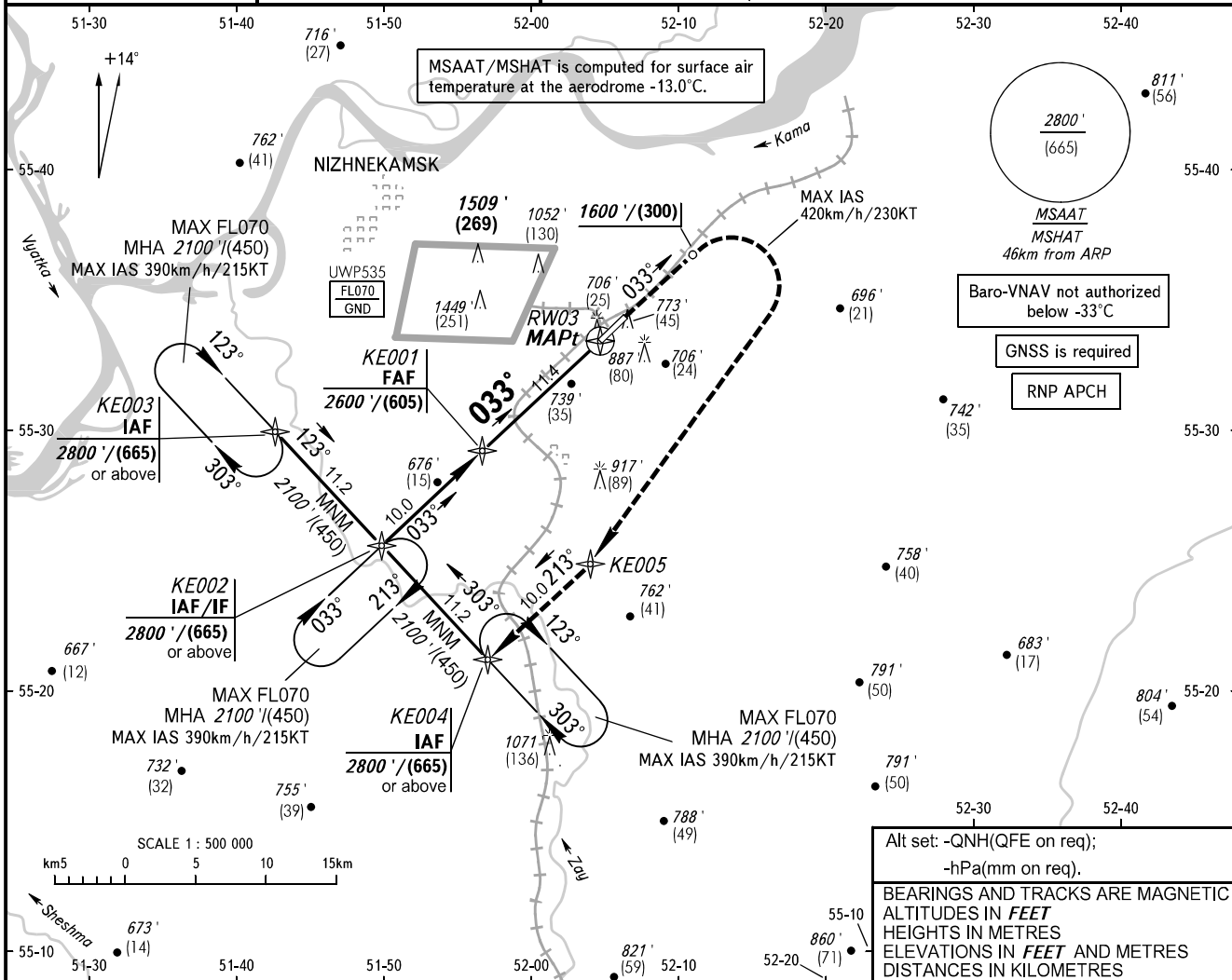


**INSTRUMENT  
APPROACH  
CHART - ICAO**

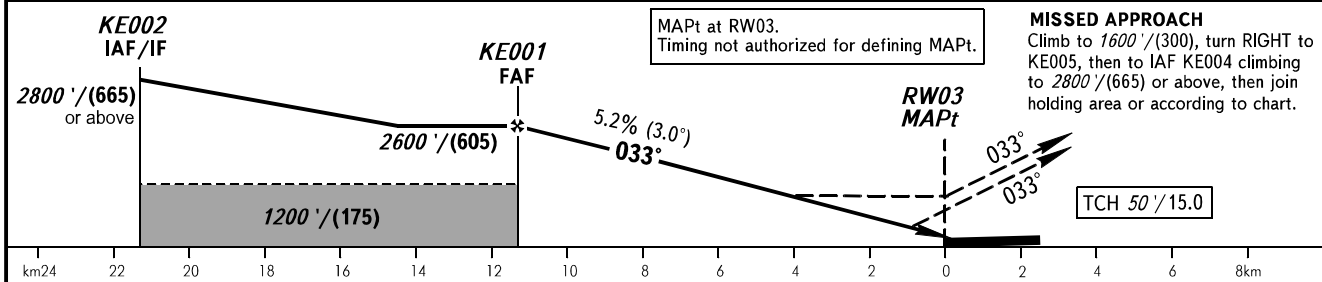
RADAR	127.900
TOWER	127.900
START	121.200

**NIZHNEKAMSK, RUSSIA**  
BEGISHEVO  
RNP RWY 03

TRANSITION LEVEL: <b>1</b>	TRANSITION ALT: 3000'	AD ELEV: 643' / 196m
	TRANSITION HGT: (700)	THR ELEV: 627' / 191.0m



DIST to RW03	10.0	8.0	6.0	4.0	2.0
ALTITUDE	2390' / 730	2050' / 625	1710' / 520	1370' / 420	1030' / 315
HEIGHT	(1760' ) / (540)	(1420' ) / (435)	(1080' ) / (330)	(740' ) / (225)	(400' ) / (120)



OCA(H)		A	B	C	D	TRANSITION LEVEL:										
Straight-in Approach	LNAV/VNAV	835' (208') 255 (64)	848' (221') 259 (68)	856' (229') 261 (70)	905' (278') 276 (85)	- FL040 when QNH is 1013 hPa (760mm mercury column) or above;										
	LNAV	990' (360') 300 (110)	990' (360') 300 (110)	990' (360') 300 (110)	990' (360') 300 (110)	- FL050 when QNH is 977 hPa (733mm mercury column) or above, but less than 1013 hPa (760mm mercury column);										
Circling		1070' (430') 330 (130)	1190' (540') 365 (165)	1290' (640') 395 (195)	1340' (690') 410 (210)	- FL060 when QNH is less than 977 hPa (733mm mercury column).	Visual manoeuvring in sector 228° - 018° is PROHIBITED.									
GROUND SPEED	km/h	150	180	210	240	270	300	330	360	390	420	450				
	kt	81	97	113	130	146	162	178	194	211	227	243				
RATE OF DESCENT	m/s	2.2	2.6	3.0	3.5	3.9	4.3	4.8	5.2	5.6	6.1	6.5				
	ft/min	427	512	597	682	768	853	938	1024	1109	1194	1280				

CHANGE: New chart