

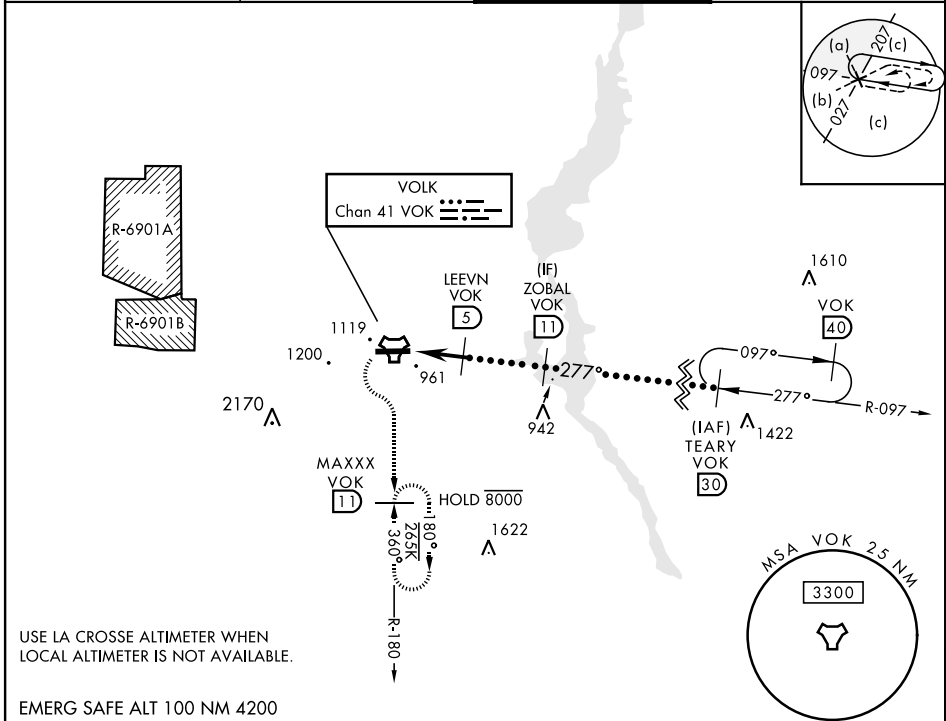
# HI-TACAN RWY 27

TACAN VOK Chan 41	APCH CRS 277°	Rwy Idg THRE Arprt Elev 9000 904 912	AL-714 [USAF]	VOLK FLD (KVOK)
----------------------	------------------	---	---------------	-----------------

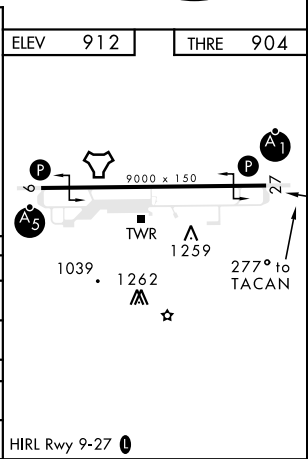
\* When ALS inop, increase vis to 1½ miles.  
 \*\* Circling not authorized South of Rwy 9-27.  
 \*\*\* When ALS inop, increase vis to 1¾ miles.

**MISSED APPROACH:** Climbing left turn to 3000 intercept VOK TACAN R-180 to MAXXX and hold.

ATIS <b>134.35 257.85</b>	APP CON <b>135.25 244.875</b>	TOWER★ <b>127.5</b> (CTAF) <b>239.25</b>	GND CON <b>121.9 275.8</b>
------------------------------	----------------------------------	---	-------------------------------



3000 VOK R-180	MAXXX VOK 11	TEARY VOK 30	
TACAN	EEDEE 1.5	LEEVN 5	
	2200	ZOBAL 11	
	2700	FL180	
	0.5	3.5 NM	
2.94° TCH 53			
CATEGORY	C	D	E
S-27 *	1360/45 456 (500-7%)		
CIRCLING **	1500-1½ 588 (600-1½)	1500-2 588 (600-2)	1580-2¼ 668 (700-2¼)
LA CROSSE ALTIMETER SETTING MINIMUMS			
S-27 ***	1500- 1¼ 596 (600-1¼)		
CIRCLING **	1640-2 728 (800-2)	1640-2¼ 728 (800-2¼)	1720-2¾ 808 (900-2¾)



# HI-TACAN RWY 27

EC-3, 20 MAR 2025 to 17 APR 2025

EC-3, 20 MAR 2025 to 17 APR 2025

