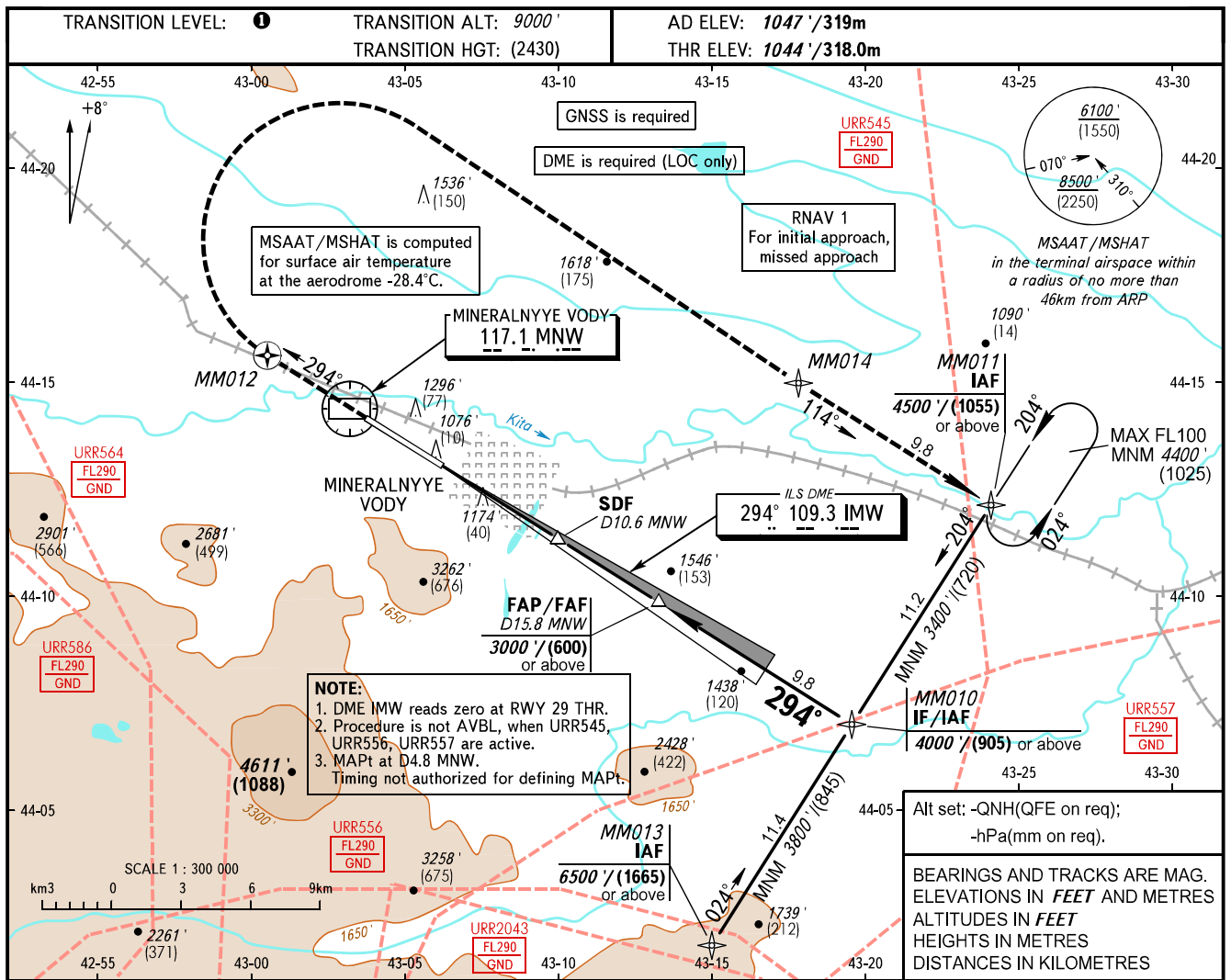


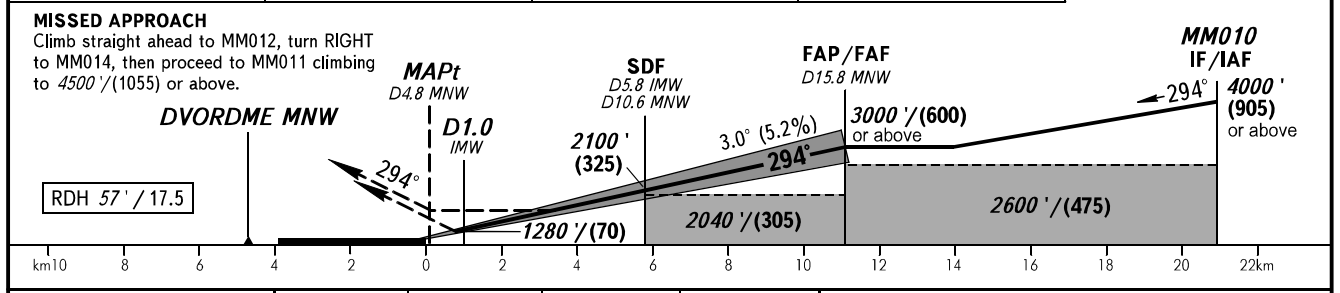
**INSTRUMENT  
APPROACH  
CHART - ICAO**

**MINERALNYYE VODY, RUSSIA  
MINERALNYYE VODY  
ILS Z CAT I, LOC Z RWY 29**

RADAR **120.700**  
START **128.000**



DME MNW	10.0	12.0	14.0
ALTITUDE/HEIGHT	2006' / (293)	2347' / (397)	2688' / (501)



OCA(H)		A	B	C	D					
Straight-in Approach	<b>CAT I</b>	1206' (162') (50)	1218' (174') (54)	1226' (182') (56)	1237' (193') (59)					
	<b>LOC</b>	<b>With SDF</b>	1700' (660') (205)	1700' (660') (205)	1700' (660') (205)	1700' (660') (205)				
		<b>WO SDF</b>	2040' (1000') (305)	2040' (1000') (305)	2040' (1000') (305)	2040' (1000') (305)				
Circling		1890' (840') (260)	1890' (840') (260)	2180' (1140') (350)	2320' (1280') (395)					
GROUND SPEED	km/h		150	180	210	240	270	300	330	360
	kt		81	97	113	130	146	162	178	194
RATE OF DESCENT	m/s		2.2	2.6	3.0	3.5	3.9	4.3	4.8	5.2
	ft/min		427	512	597	682	768	853	938	1024

**TRANSITION LEVEL:**  
- FL100 when QNH is 1013 hPa (760mm mercury column) or above;  
- FL110 when QNH is 977 hPa (733mm mercury column) or above, but less than 1013 hPa (760mm mercury column);  
- FL120 when QNH is less than 977 hPa (733mm mercury column).  
Visual manoeuvring south of the AD is PROHIBITED.