

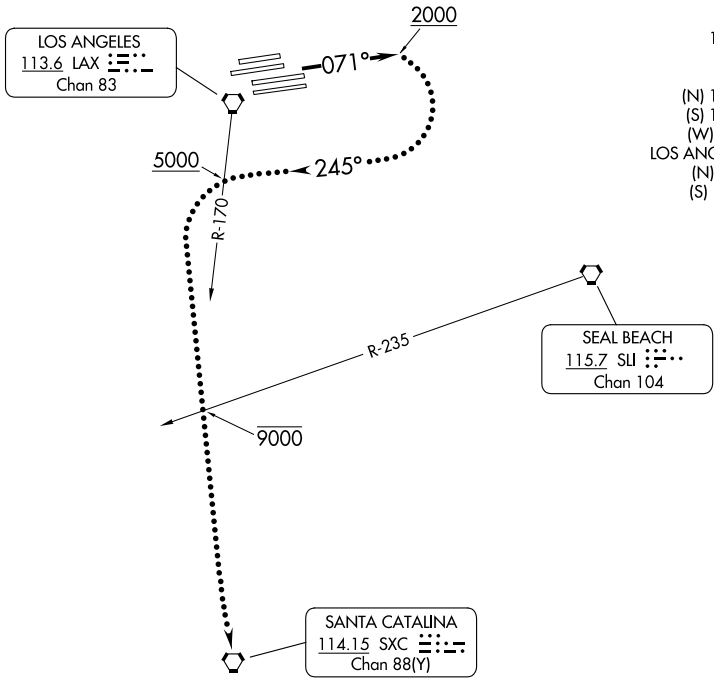
# CATALINA EIGHT DEPARTURE

AL-237 (FAA)

LOS ANGELES INTL (LAX)  
LOS ANGELES, CALIFORNIA

**TOP ALTITUDE:  
ASSIGNED BY ATC**

SOCAL DEP CON  
 124.3 363.2 (045°-224°)  
 125.2 263.025 (225°-044°)  
 D-ATIS DEP  
 135.65  
 CLNC DEL  
 120.35 327.0  
 CPDLC  
 GND CON  
 (N) 121.65 327.0  
 (S) 121.75 327.0  
 (W) 121.4 327.0  
 LOS ANGELES TOWER  
 (N) 133.9 239.3  
 (S) 120.95 379.1



**TAKEOFF MINIMUMS**

Rwys 24L/R, 25L/R: NA-Operational.  
Rwys 6L/R, 7L/R: Standard.

NOTE: RADAR required.

NOTE: This is a RADAR vector departure to SXC VORTAC. Route depicted is a lost communication procedure only.

NOTE: Chart not to scale.

## DEPARTURE ROUTE DESCRIPTION

**TAKEOFF RUNWAYS 6L/R, 7L/R:** Climb heading 071° for vectors to SXC VORTAC. Then on (assigned route). All aircraft expect further clearance to filed altitude 5 minutes after departure.

**LOST COMMUNICATIONS:**

**TAKEOFF RUNWAYS 6L/R, 7L/R:** If not in contact with Departure Control after reaching 2000', turn right heading 245°. Cross LAX R-170 at or above 5000', then turn left and proceed direct SXC VORTAC. Cross SLI R-235 at or below 9000'.

# CATALINA EIGHT DEPARTURE

SW-3, 20 MAR 2025 to 17 APR 2025

SW-3, 20 MAR 2025 to 17 APR 2025