

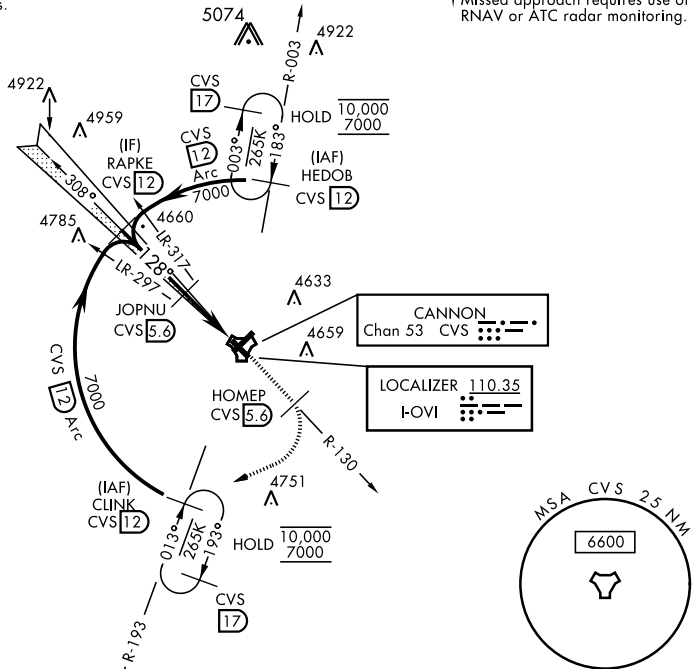
# ILS or LOC RWY 13

LOC I-OVI <b>110.35</b>	APCH CRS <b>128°</b>	Rwy ldg 8196 TDZE 4294 Arprt Elev 4295	AL-512 [USAF]	CANNON AFB (KCVS)
ATC RADAR or DME required.			SSALR 	† MISSED APPROACH: Climb to 6000 out CVS TACAN R-130 5.6 DME (HOMEP) then climbing right turn to 7000 intercept CVS R-193 to 12 DME (CLINK) and hold.
* When ALS inop, increase vis to ¾ mile.				

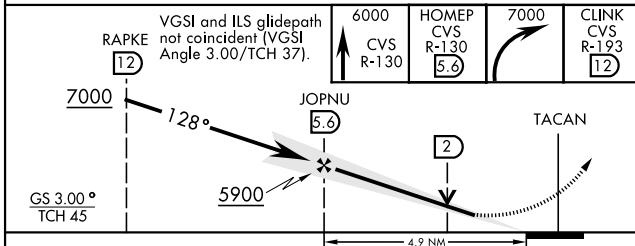
ATIS <b>119.1 269.9</b>	CANNON APP CON <b>118.425 352.1</b>	CANNON TOWER <b>120.4 270.25</b>	GND CON <b>121.9 275.8</b>	CLNC DEL <b>120.2 293.225</b>
----------------------------	----------------------------------------	-------------------------------------	-------------------------------	----------------------------------

\*\* When ALS inop, increase CAT AB vis to 1 mile; CAT CDE vis to 1 3/8 miles.

† Missed approach requires use of RNAV or ATC radar monitoring.



EMERG SAFE ALT 100 NM 8000



ELEV 4295	TDZE 4294
128°	
4525	4433
4327	TWR 4437
HIRL all rwys	
FAF to MAP 4.9 NM	
Knots	60 90 120 150 180
Min:Sec	4:54 3:16 2:27 1:58 1:38

# ILS or LOC RWY 13

SW-1, 20 MAR 2025 to 17 APR 2025

SW-1, 20 MAR 2025 to 17 APR 2025