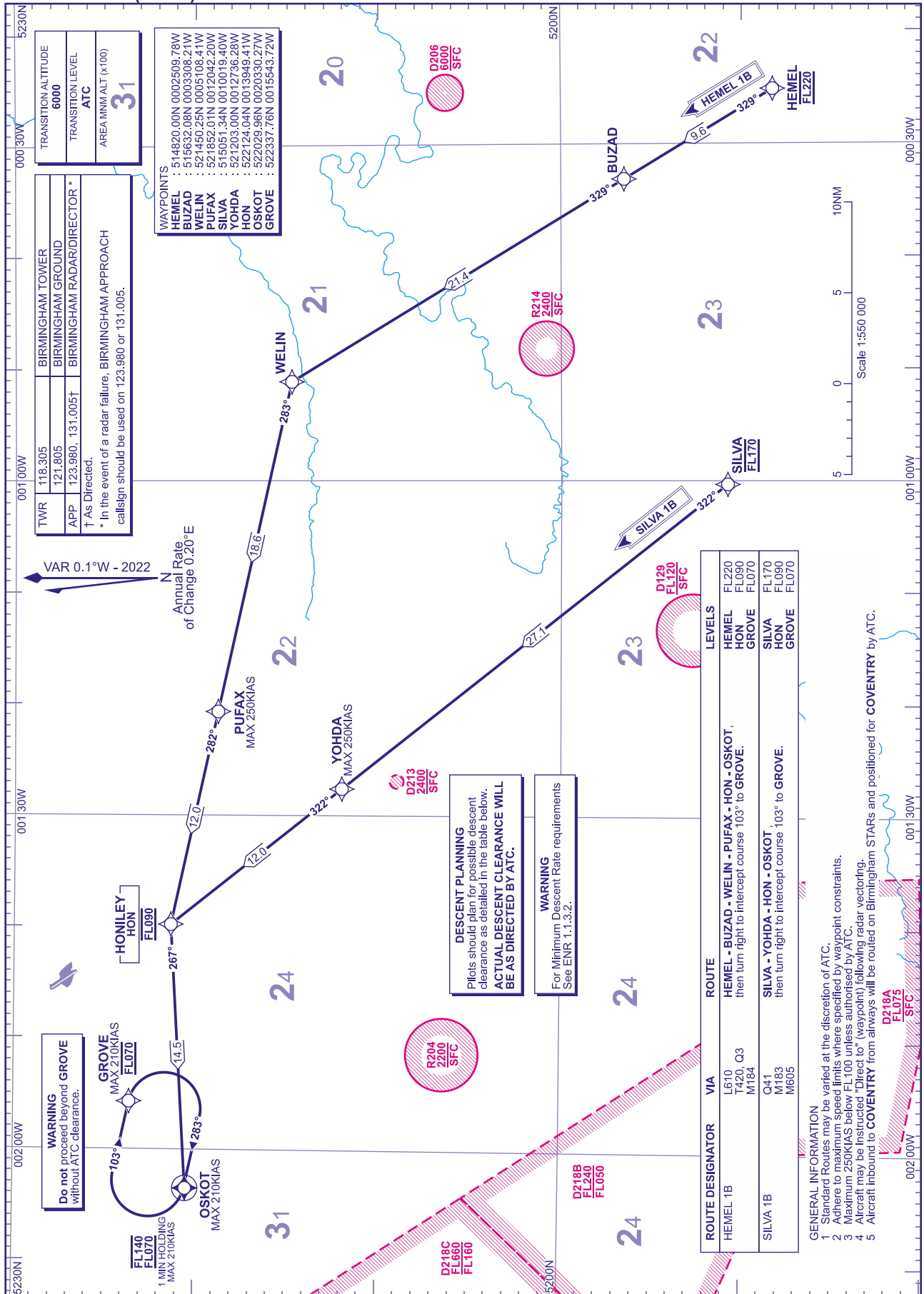


RNAV5 (DME/DME or GNSS) STANDARD ARRIVAL CHART - INSTRUMENT (STAR) - ICAO

DISTANCES IN NAUTICAL MILES
TRACKS ARE MAGNETIC
ALTITUDES AND ELEVATIONS ARE IN FEET

**BIRMINGHAM
HEMEL 1B SILVA 1B**



TRANSITION ALTITUDE	6000
TRANSITION LEVEL	ATC
AREA MIN ALT (x100)	31

TWR	118.305	BIRMINGHAM TOWER
	121.805	BIRMINGHAM GROUND
APP	123.980, 131.005†	BIRMINGHAM RADAR/DIRECTOR *

† As Directed.
* In the event of a radar failure, BIRMINGHAM APPROACH callsign should be used on 123.980 or 131.005.

WAYPOINTS
HEMEL : 514820.00N 0002509.78W
BUZAD : 515632.08N 0003308.21W
WELIN : 521490.23N 0005108.41W
PUFAX : 521652.01N 0012042.20W
SILVA : 515051.34N 0010019.40W
YOHDA : 521203.00N 0012736.28W
HON : 521124.04N 0013949.41W
OSKOT : 522029.96N 0020330.27W
GROVE : 522337.76N 0015543.72W

DESCENT PLANNING
Pilots should plan for possible descent clearance as detailed in the table below.
ACTUAL DESCENT CLEARANCE WILL BE AS DIRECTED BY ATC.

WARNING
For Minimum Descent Rate requirements See ENR 1.1.3.2.

ROUTE DESIGNATOR	VIA	ROUTE	LEVELS
HEMEL 1B	L610, T420, Q3, M184	HEMEL - BUZAD - WELIN - PUFAX - HON - OSKOT, then turn right to intercept course 103° to GROVE.	FL220, FL090, FL070
SILVA 1B	Q41, M183, M605	SILVA - YOHDA - HON - OSKOT, then turn right to intercept course 103° to GROVE.	FL170, FL090, FL070

- GENERAL INFORMATION**
- Standard Routes may be varied at the discretion of ATC.
 - Adhere to maximum speed limits where specified by waypoint constraints.
 - Maximum 250KIAS below FL100 unless authorised by ATC.
 - Aircraft may be instructed "Direct to" (waypoint) following radar vectoring.
 - Aircraft inbound to COVENTRY from airways will be routed on Birmingham STARS and positioned for COVENTRY by ATC.