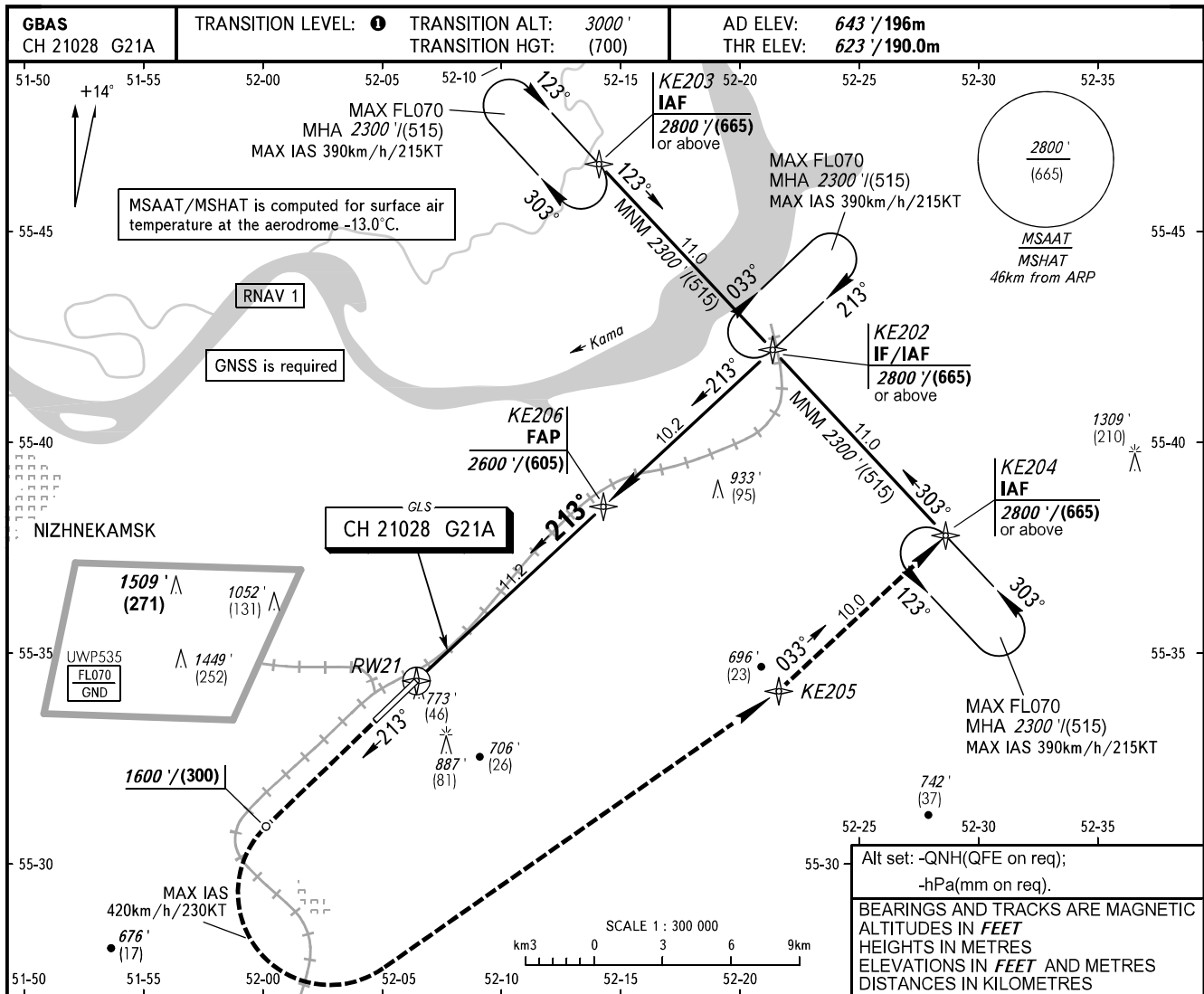


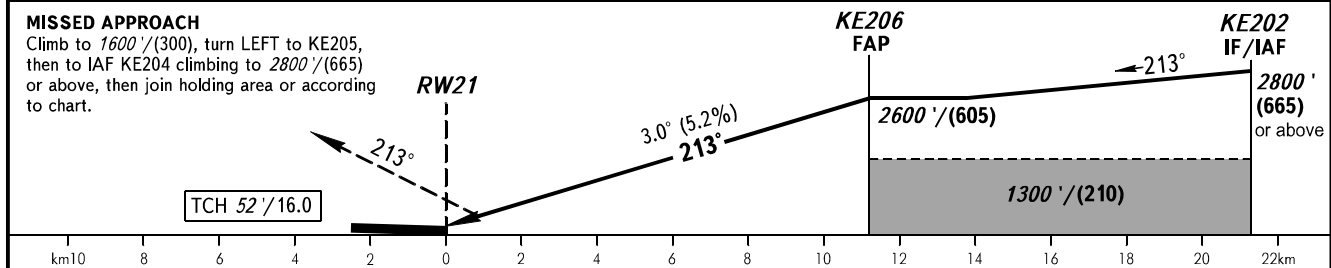
**INSTRUMENT  
APPROACH  
CHART - ICAO**

**NIZHNEKAMSK, RUSSIA  
BEGISHEVO  
GLS RWY 21**

RADAR	127.900
TOWER	127.900
START	121.200



DIST to RW21	2.0	4.0	6.0	8.0	10.0
ALTITUDE	1020' / 310	1360' / 415	1700' / 520	2050' / 625	2390' / 730
HEIGHT	(400') / (120)	(740') / (225)	(1080') / (330)	(1420') / (435)	(1760') / (540)



OCA(H)		A	B	C	D	① TRANSITION LEVEL: - FL040 when QNH is 1013 hPa (760mm mercury column) or above; - FL050 when QNH is 977 hPa (733mm mercury column) or above, but less than 1013 hPa (760mm mercury column); - FL060 when QNH is less than 977 hPa (733mm mercury column). Visual manoeuvring in sector 228° - 018° is PROHIBITED.										
Straight-in Approach	CAT I	771' (148')	781' (158')	794' (171')	807' (184')											
		235 (45)	238 (48)	242 (52)	246 (56)											
Circling		1070' (430')	1190' (540')	1290' (640')	1340' (690')											
		330 (130)	365 (165)	395 (195)	410 (210)											
GROUND SPEED	km/h	150	180	210	240	270	300	330	360	390	420	450				
	kt	81	97	113	130	146	162	178	194	211	227	243				
RATE OF DESCENT	m/s	2.2	2.6	3.0	3.5	3.9	4.3	4.8	5.2	5.6	6.1	6.5				
	ft/min	427	512	597	682	768	853	938	1024	1109	1194	1280				