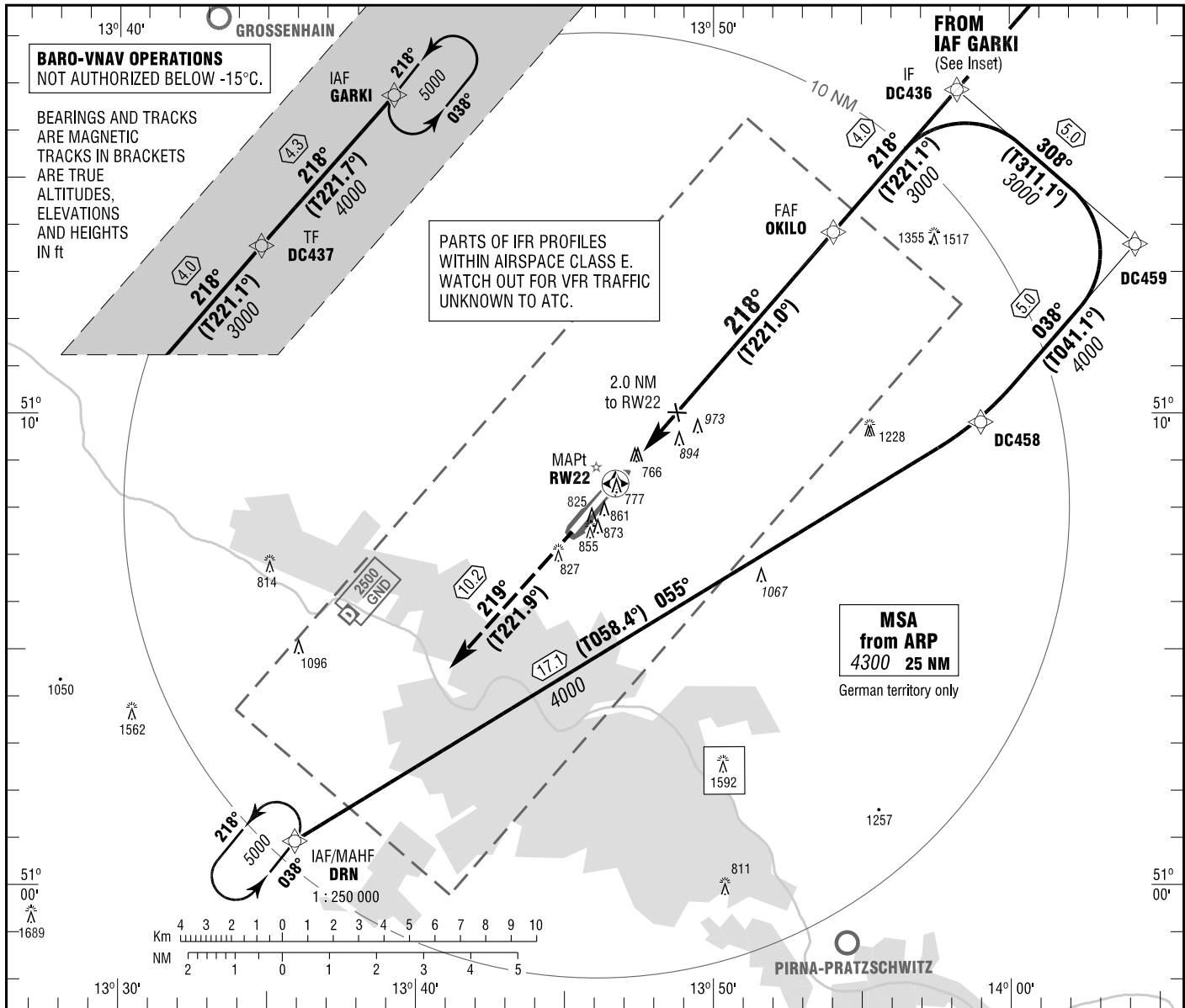


DRESDEN  
RNAV (GPS)  
RWY 22

DRESDEN ATIS 118.880 DRESDEN GROUND 121.980  
MUNCHEN RADAR 125.875 DRESDEN APRON 121.755  
DRESDEN TOWER 122.930

ELEV 754  
OCH RELATED TO THR 22 ELEV 700  
VAR 3° E

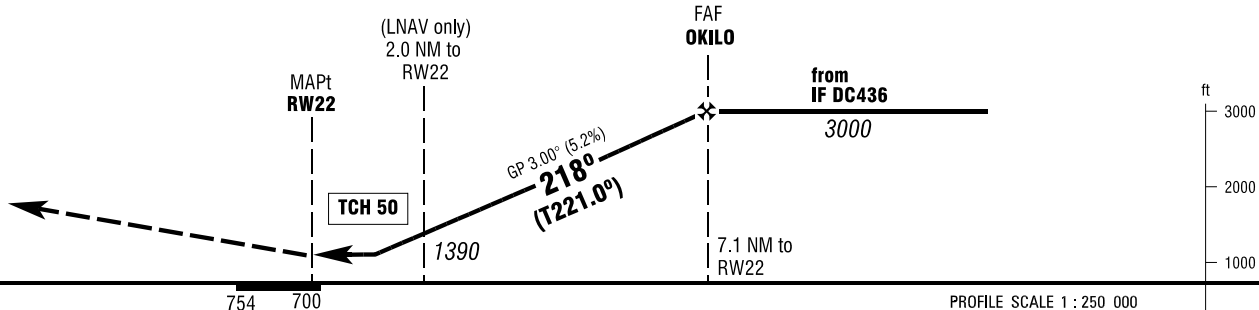
INSTRUMENT  
APPROACH  
CHART - ICAO



**MISSED APPROACH PROCEDURE**

Climb on track 219° to DRN to 5000.

DRN - [5000].



OCA (OCH)	A	B	C	D
LNAV	1150 (450)	1150 (450)	1150 (450)	1150 (450)
LNAV / VNAV	1021 (321)	1031 (331)	1041 (341)	1050 (350)
CIRCLING OCH RELATED TO AD ELEV	1230 (480)	1360 (600)	1460 (710)	1460 (710)

DIST THR / RW22	2	3	4	5	6	7
ALTITUDE	1390	1710	2030	2350	2670	2980

Timing not authorized for defining the MAPt.

GS	kt	80	100	120	140	160	180
FAF OKILO - RW22 (7.1 NM)	MIN:SEC	5:20	4:16	3:33	3:03	2:40	2:22
Rate of descent (5.2%)	ft / MIN	420	530	640	740	850	960

Correction: Communications.