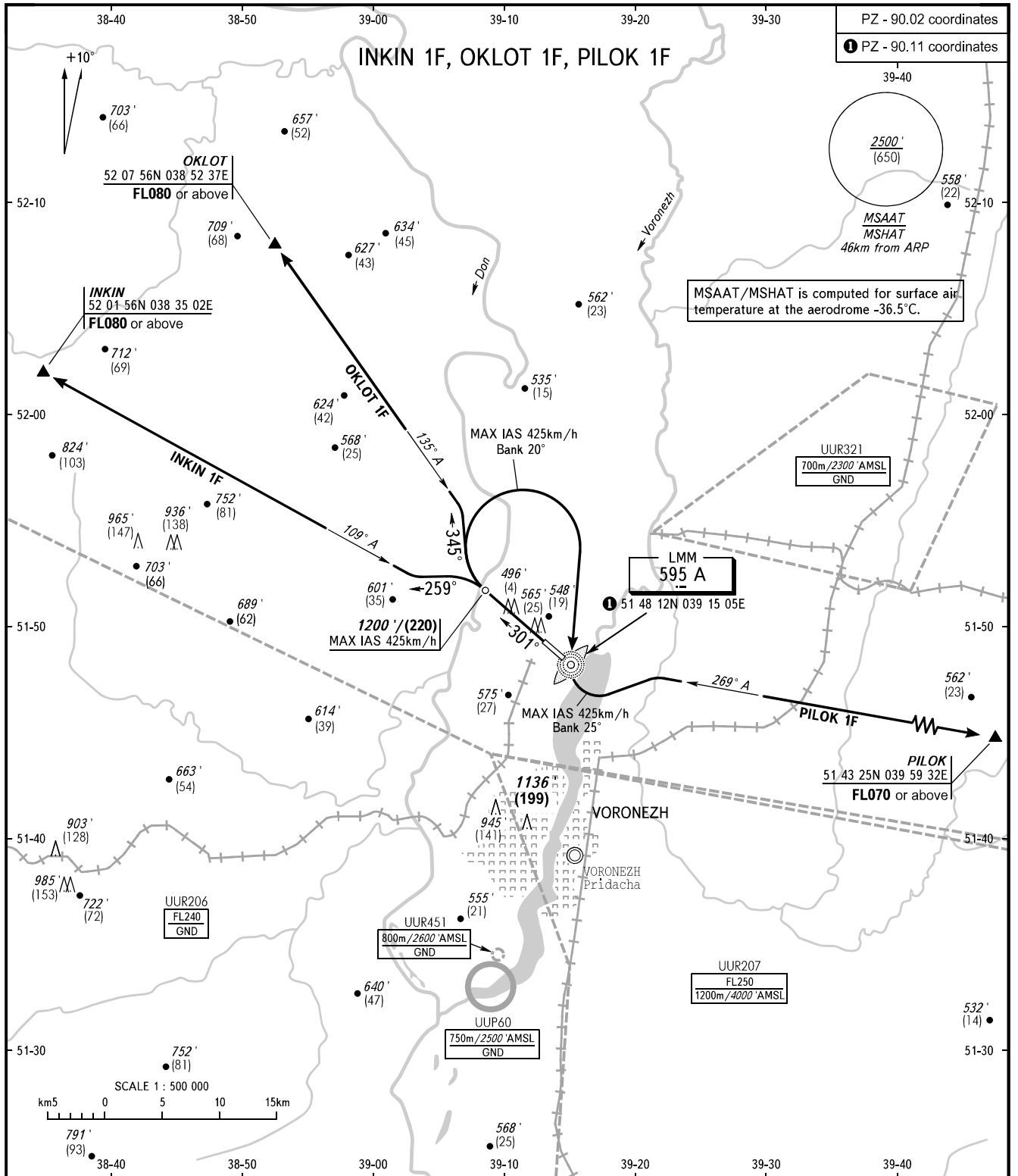


STANDARD DEPARTURE CHART
INSTRUMENT (SID) - ICAO

TRANSITION ALT: **5000'**
TRANSITION HGT: **(1370)**

VORONEZH, RUSSIA
CHERTOVITSKOYE
RWY 30



PZ - 90.02 coordinates
① PZ - 90.11 coordinates

MSAAT/MSHAT is computed for surface air temperature at the aerodrome -36.5°C.

LMM
595 A
① 51 48 12N 039 15 05E

TOWER **118.300**

MINIMUM CLIMB GRADIENTS (due to airspace structure):
INKIN 1F: 4.7% up to FL080;
OKLOT 1F: 5.5% up to FL080.

BEARINGS AND TRACKS ARE MAGNETIC
ALTITUDES IN **FEET**
HEIGHTS IN METRES
ELEVATIONS IN **FEET** AND METRES
DISTANCES IN KILOMETRES

Alt set: -QNH(QFE on req);
-hPa(mm on req).