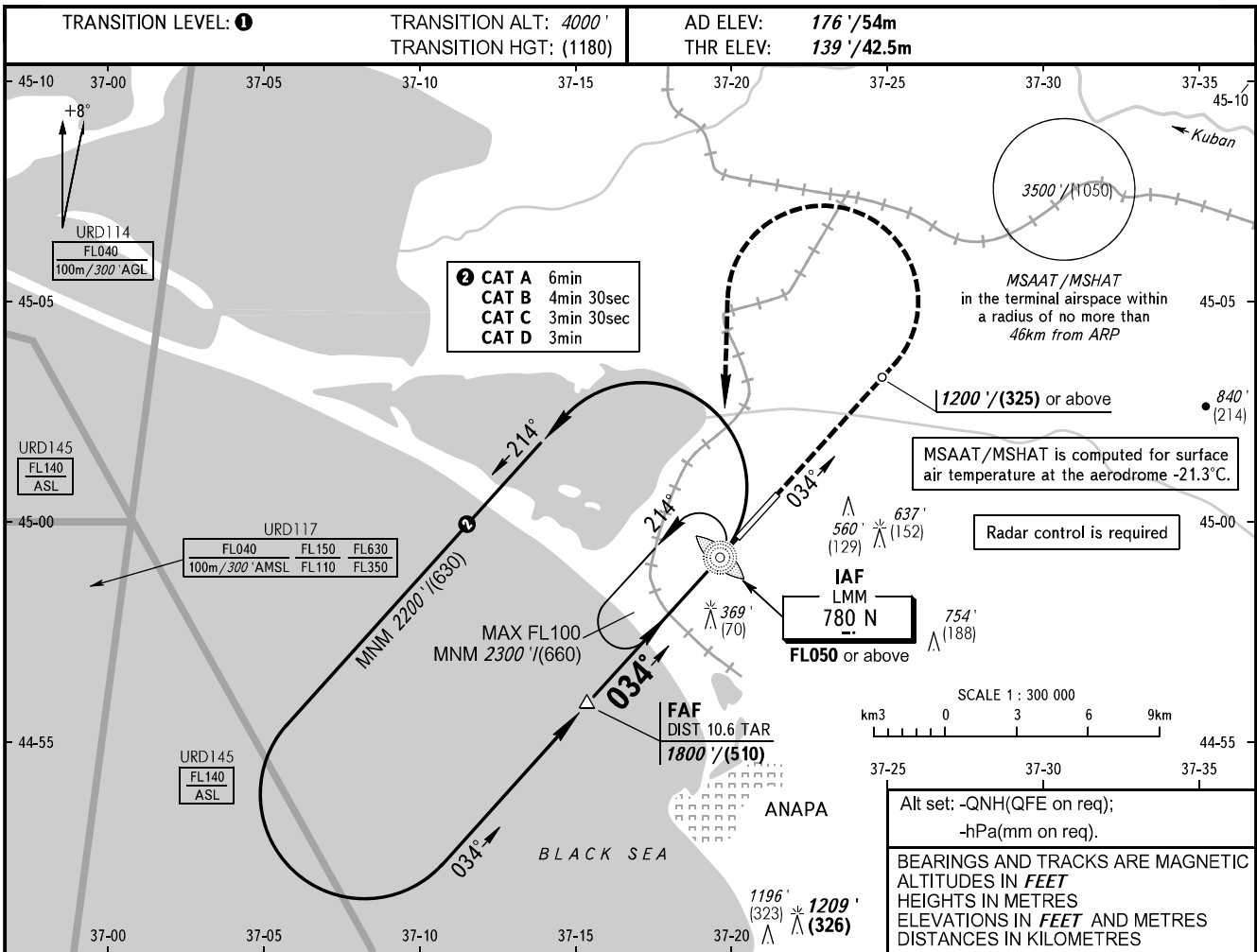


**INSTRUMENT
APPROACH
CHART - ICAO**

ANAPA RADAR **118.700**
ANAPA TOWER **119.800**

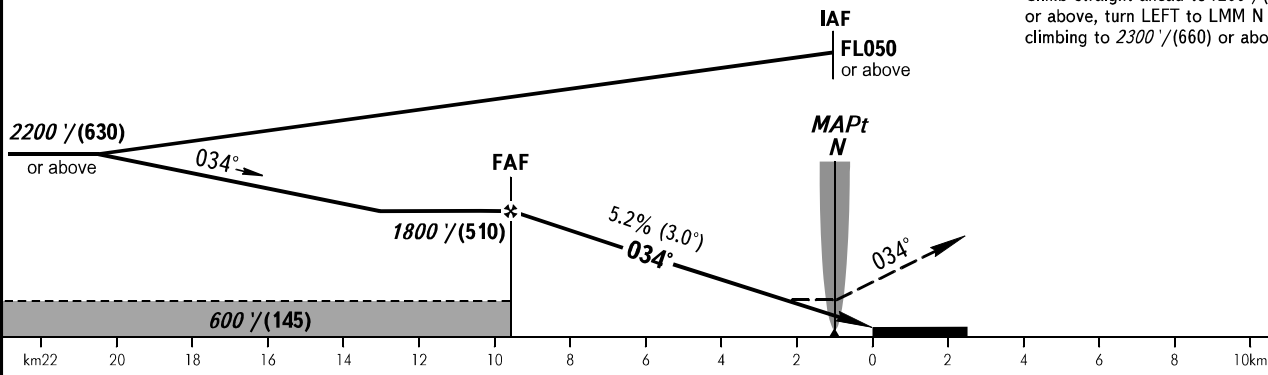
ANAPA, RUSSIA
VITYAZEVO
NDB Z RWY 03



FAF is fixed by TAR - DIST 10.6km.

MISSED APPROACH

Climb straight ahead to 1200' / (325) or above, turn LEFT to LMM N climbing to 2300' / (660) or above.



OCA(H)		A	B	C	D	1 TRANSITION LEVEL: - FL050 when QNH is 1013 hPa (760mm mercury column) or above; - FL060 when QNH is 977 hPa (733mm mercury column) or above, but less than 1013 hPa (760mm mercury column); - FL070 when QNH is less than 977 hPa (733mm mercury column). WARNING Turn before passing MAPt is PROHIBITED. MAPt at LMM N. Timing is not authorized for defining MAPt.							
Straight-in Approach		560' (420') (130)	560' (420') (130)	560' (420') (130)	560' (420') (130)								
Circling		860' (680') (210)	940' (760') (235)	1040' (860') (265)	1150' (980') (300)								
GROUND SPEED		km/h	150	180	210	240	270	300	330	360	390		
		kt	81	97	113	130	146	162	178	194	211		
RATE OF DESCENT		m/s	2.2	2.6	3.0	3.5	3.9	4.3	4.8	5.2	5.6		
		ft/min	427	512	597	682	768	853	938	1024	1109		

CHANGE: URD145