

**TERPS
 INSTRUMENT DEPARTURE CHART**

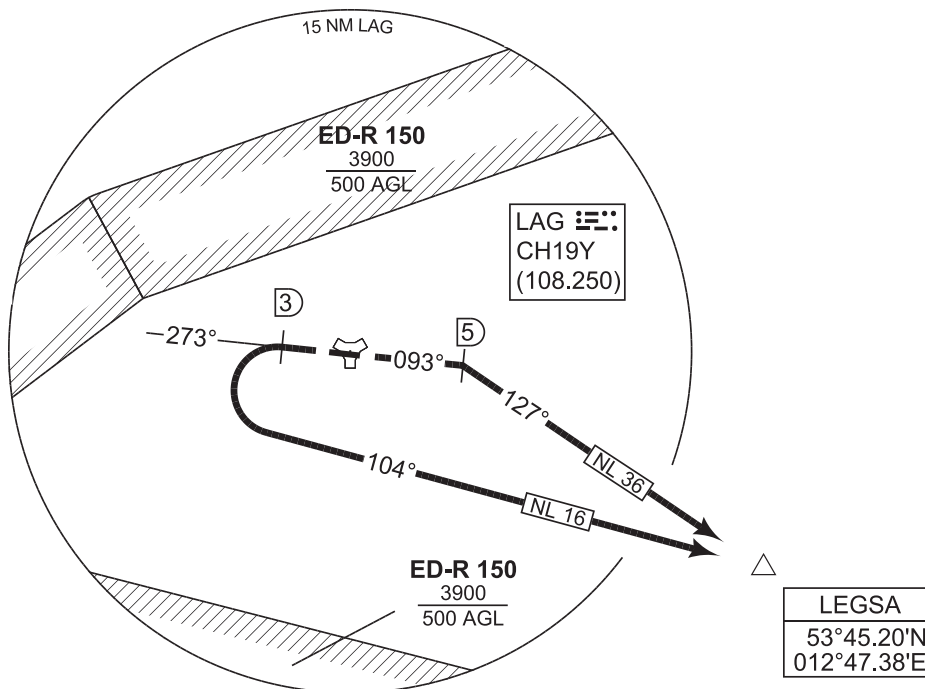
AD ELEV 140

**NL 16 - 36
 LAAGE (ETNL)**

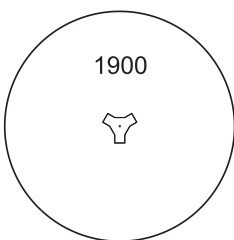
LAAGE TOWER 336.400 118.430	LAAGE RADAR 376.400 133.105	BREMEN RADAR 259.825 124.175				LAAGE ATIS 134.605			
	RWY	Knots	60	120	180	240	300	360	to
	27	V/V (fpm)	250	500	750	1000	1250	1500	3500 ft
	09	V/V (fpm)	230	460	690	920	1150	1380	1800 ft



IFR PROFILES WITHIN
 AIRSPACE CLASS "E"
 WATCH OUT FOR VFR
 TRAFFIC UNKNOWN TO ATC.



MSA LAG 25 NM



EMERG SAFE ALT 100 NM 3500

TA 5000

CHANGE: VAR (376/23)

NL 16 (RWY 27)	<ul style="list-style-type: none"> - Climb on track 273° to LAG/3 DME - Turn left and proceed on track 104° to LEGSA - INITIAL CLIMB: 4000 ft
NL 36 (RWY 09)	<ul style="list-style-type: none"> - Climb on track 093° to LAG/5 DME - Turn right and proceed on track 127° to LEGSA - INITIAL CLIMB: 4000 ft

ZentrLuftOp 28 DEC 2023

NL 16 - 36

53°55.09'N
 012°16' 76"F

LAAGE (ETNL)