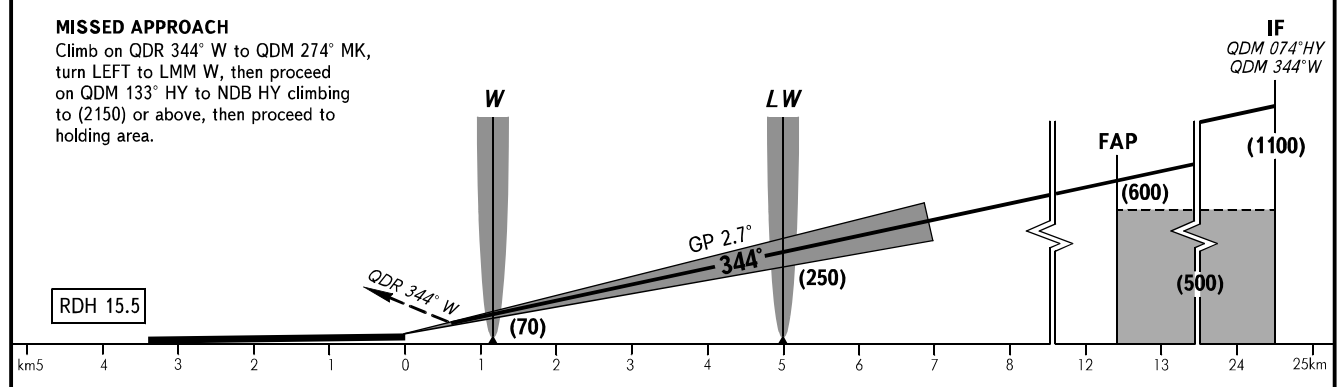
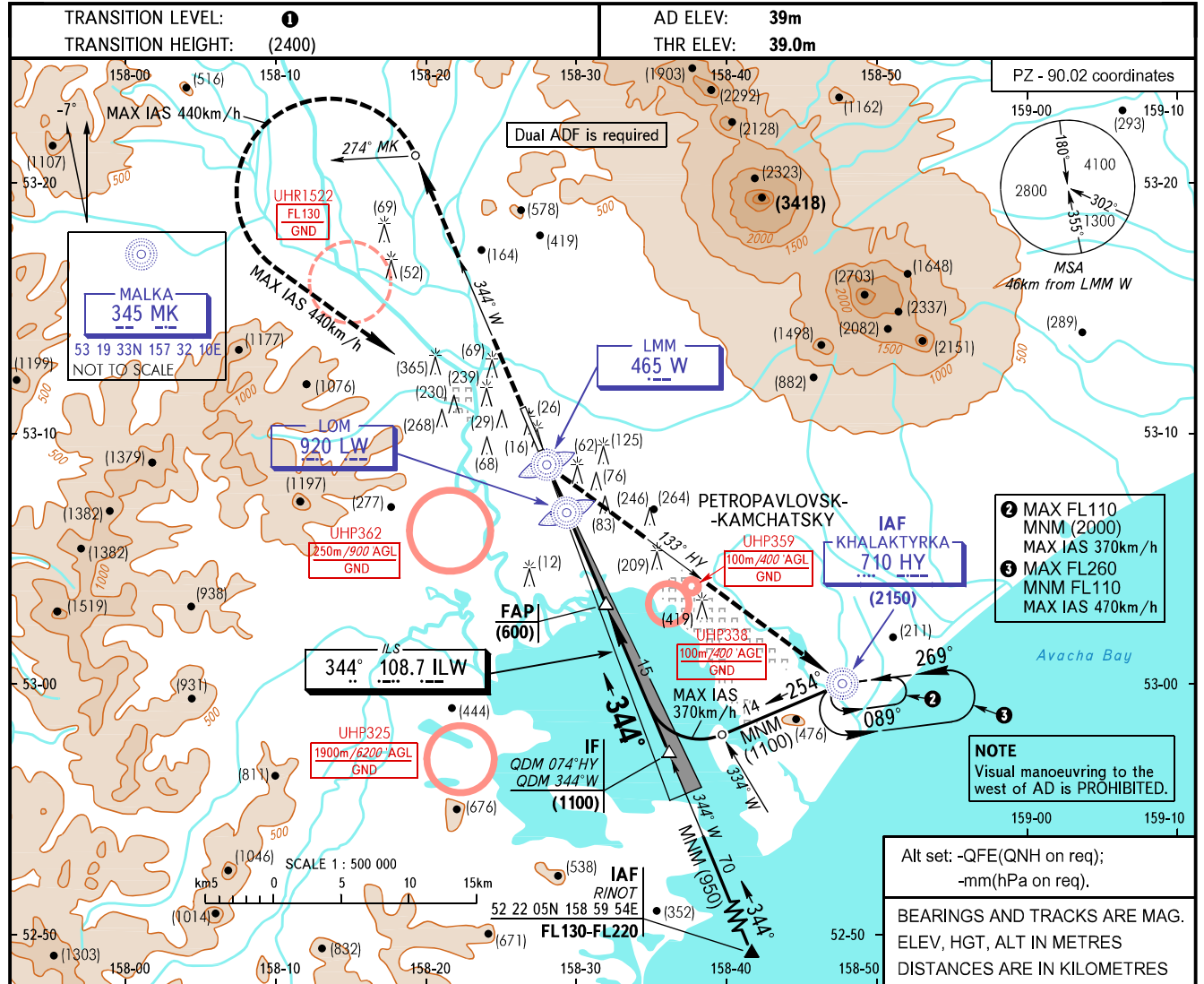


**INSTRUMENT
APPROACH
CHART - ICAO**

START **118.100**
RADAR **119.400**

PETROPAVLOVSK-KAMCHATSKY, RUSSIA
YELIZOVO
ILS Y CAT I/II RWY 34L



OCA(H)		A	B	C	D							
Straight-in	CAT I	2.5%	443(405)	446(408)	449(411)	452(414)						
		5.0%	89(50)	92(53)	95(56)	98(59)						
	CAT II	2.5%	417(379)	422(384)	426(388)	430(392)						
		5.0%	62(23)	67(28)	71(32)	75(36)						
Circling		295(260)	345(310)	480(445)	555(520)							
GROUND SPEED		km/h	150	180	210	240	270	300	330	360	390	
RATE OF DESCENT		m/s		2.0	2.4	2.7	3.1	3.5	3.9	4.3	4.7	5.1

1 TRANSITION LEVEL:
- FL090 when QFE is 756mm mercury column or above;
- FL100 when QFE is 729mm mercury column or above, but less than 756mm mercury column;
- FL110 when QFE is less than 729mm mercury column.

WARNING:
1. Level-flight leg is not AVBL on intermediate approach segment.
2. During missed approach maintain climb gradient of 5.0% up to (1400).