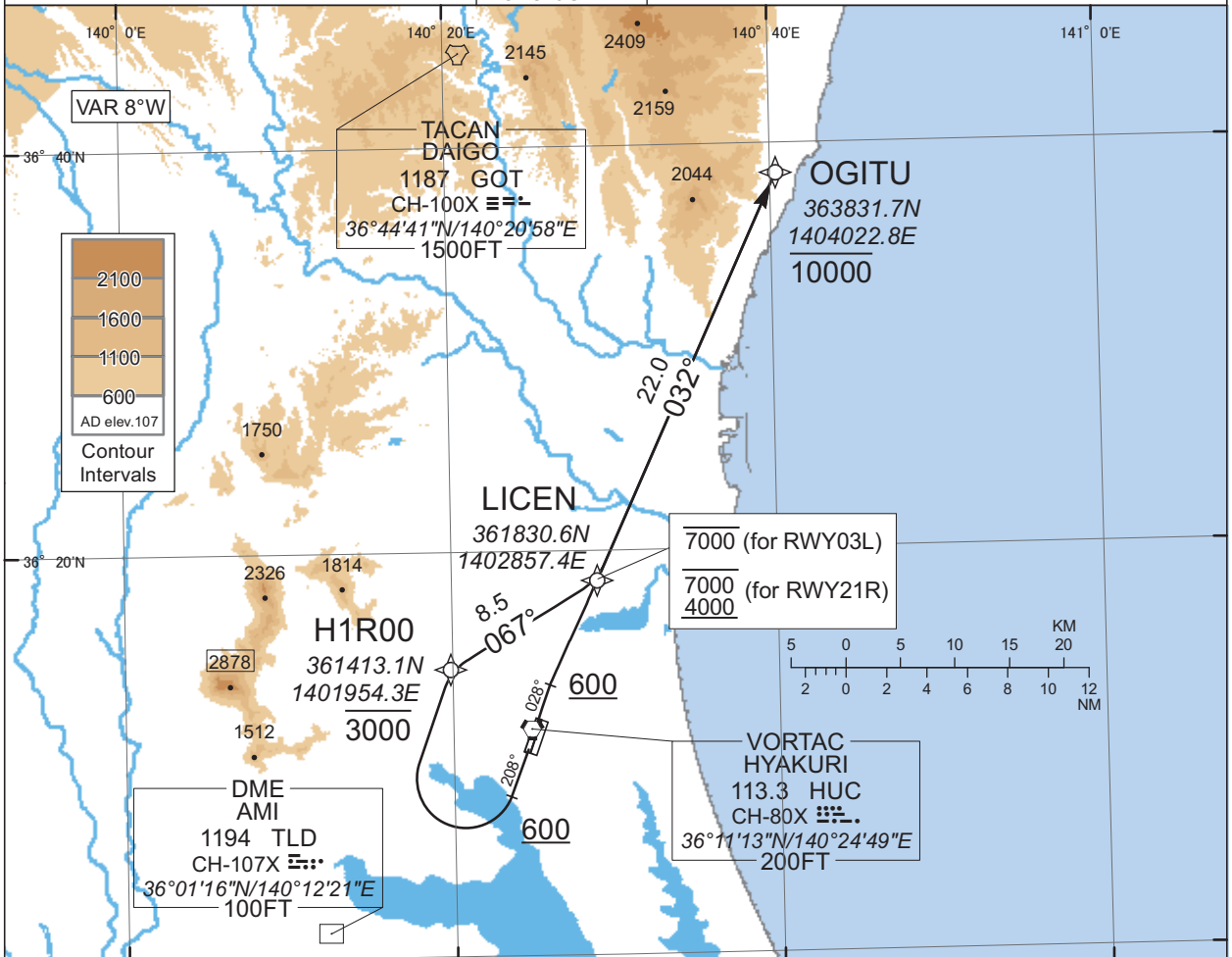


STANDARD DEPARTURE CHART - INSTRUMENT

RJAH / HYAKURI

RNAV SID

HITAKA ONE DEPARTURE		RNAV1
Note 1) DME/DME/IRU or GNSS required. ※The aircraft equipped with only DME/DME/IRU must be able to update its position without delay at the starting point of take-off roll. 2) RADAR service required.	Critical DME	-
	DME GAP	-
	Inappropriate Navaids	See AD1.1.6.10.3. Inappropriate NAVAIDs for RNAV1



CHANGE : Description of VAR and PROC name.

- RWY03R : (Not established)
- RWY03L : Climb on HDG028° at or above 600FT, direct to LICEN at or below 7000FT, to OGITU at or below 10000FT.
- RWY21L : (Not established)
- RWY21R : Climb on HDG208° at or above 600FT, turn right direct to H1R00 at or below 3000FT, to LICEN at 4000FT minimum, 7000FT maximum, to OGITU at or below 10000FT.

Note RWY03L : 4.1% climb gradient required up to 600FT.
 OBST ALT 141FT located at 0.1NM 338° FM end of RWY03L.

STANDARD DEPARTURE CHART - INSTRUMENT

RJAH / HYAKURI

RNAV SID

HITAKA ONE DEPARTURE

RWY03L

Serial Number	Path Descriptor	Waypoint Identifier	Fly Over	Course °M(°T)	Magnetic Variation	Distance (NM)	Turn Direction	Altitude (FT)	Speed (KIAS)	Vertical Angle	Navigation Specification
001	VA	-	-	028 (019.8)	-7.8	-	-	+600	-	-	RNAV1
002	DF	LICEN	-	-	-7.8	-	-	-7000	-	-	RNAV1
003	TF	OGITU	-	032 (024.6)	-7.8	22.0	-	-10000	-	-	RNAV1

RWY21R

Serial Number	Path Descriptor	Waypoint Identifier	Fly Over	Course °M(°T)	Magnetic Variation	Distance (NM)	Turn Direction	Altitude (FT)	Speed (KIAS)	Vertical Angle	Navigation Specification
001	VA	-	-	208 (199.8)	-7.8	-	-	+600	-	-	RNAV1
002	DF	H1R00	-	-	-7.8	-	R	-3000	-	-	RNAV1
003	TF	LICEN	-	067 (059.5)	-7.8	8.5	-	-7000 +4000	-	-	RNAV1
004	TF	OGITU	-	032 (024.6)	-7.8	22.0	-	-10000	-	-	RNAV1

CHANGE : New PROC.