

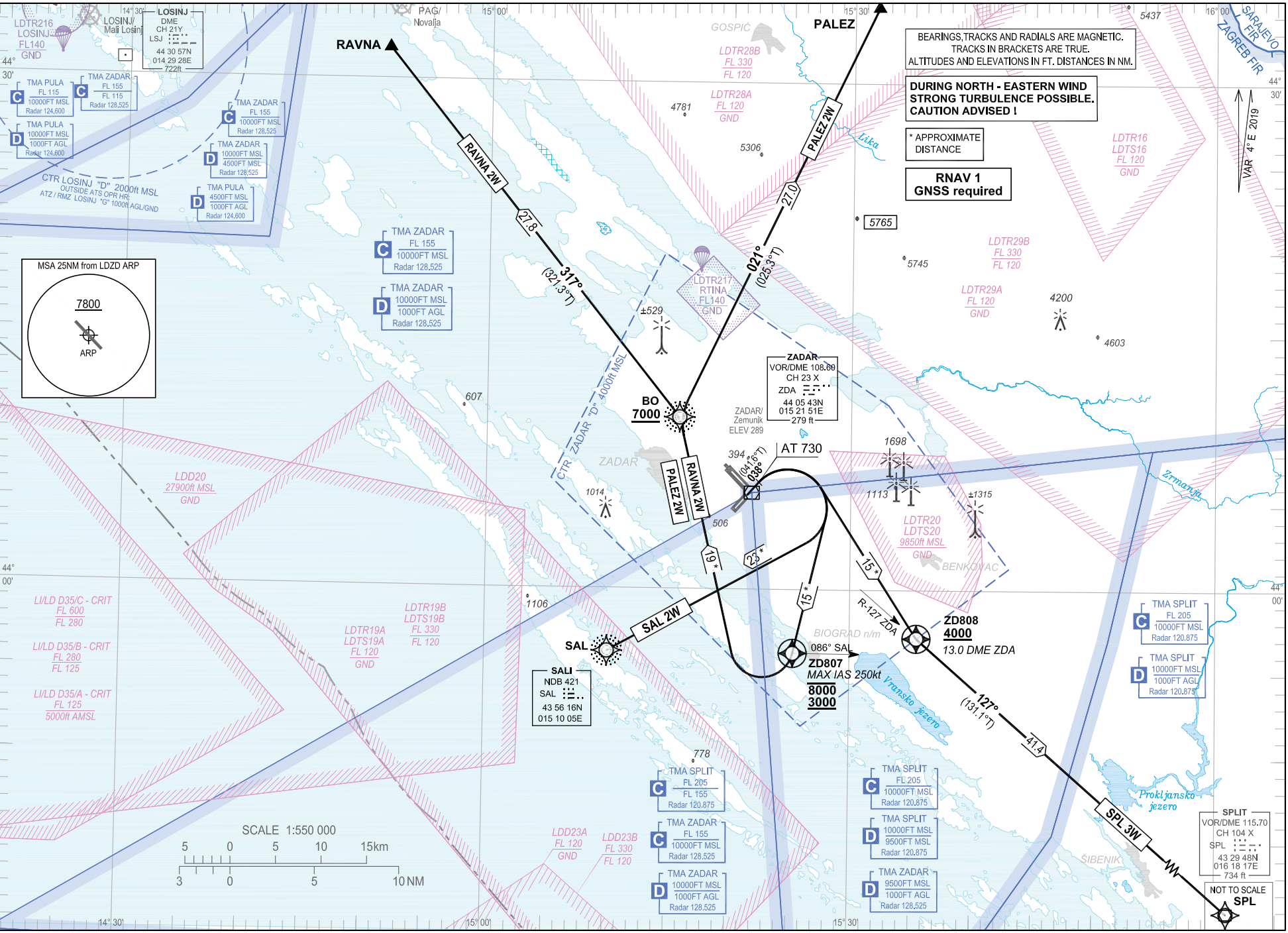
STANDARD DEPARTURE CHART  
INSTRUMENT (SID) - ICAO

TRANSITION ALTITUDE  
10 000

ZADAR TOWER 123.700  
ZADAR DELIVERY 132.975  
ZADAR RADAR 128.525

ZADAR / Zemunik (LDZD)  
RNAV RWY 04  
RAVNA 2W PALEZ 2W SAL 2W SPL 3W

CHANGE: TMAs classification vertical limits; Parachuting zones added; Editorial.



**ZADAR / Zemunik (LDZD)  
RNAV RWY 04**

RAVNA 2W PALEZ 2W SAL 2W SPL 3W

**GENERAL INFORMATION AND REQUIREMENTS FOR ALL SIDs**  
- Calculation of the SIDs is based on an all-engines operative minimum net climb gradient of 3.3 per cent (201 ft/NM). Where a greater climb gradient for a specific SID (or part of SID) is necessary, this is indicated in the tabular description of the route.  
- After take-off climb initially 8000 ft and contact Zadar Radar on 128.525 MHz.

**WARNING: Back-up conventional (NON-RNAV) procedure, in case of loss of RNAV 1 capability or RNAV system failure, below minimum radar vectoring altitude for RNAV SIDs PALEZ 2W, RAVNA 2W only:**  
Climb straight ahead. At 730 ft AMSL turn RIGHT climbing on track 190°. Cross QDR 086° SAL at or above 3000 ft AMSL, but at or below 8000 ft AMSL. After crossing QDR 086° SAL, proceed via RNAV SID flight procedure filed in FPL or according to ATC instruction. MAX IAS 250 kt. MNM PDG 3.4% (207 ft/NM) to 2000 ft.

**LDZD RNAV STANDARD INSTRUMENT DEPARTURE RWY 04**

Proposed tabular description for navigation database coding

Serial number	Route	Path descriptor	Waypoint name	Flyover	Course °M (°T)	Magnetic variation	Distance (NM)	Turn direction	Altitude (ft)	Speed (kt)	Remarks	NAV SPEC
010	RAVNA 2W	CA	-	-	038° (041.6°T)	4°E	-	-	@730	-	MNM PDG 3.4% (207 ft/NM) to 2000 ft	RNAV 1
020		DF	ZD807	Y	-	4°E	-	R	-8000 +3000	-250		
030		DF	BO	-	-	4°E	-	R	+7000	-		
040		TF	RAVNA	-	317° (321.3°T)	4°E	27.8	-	-	-		
010	PALEZ 2W	CA	-	-	038° (041.6°T)	4°E	-	-	@730	-	MNM PDG 3.4% (207 ft/NM) to 2000 ft	RNAV 1
020		DF	ZD807	Y	-	4°E	-	R	-8000 +3000	-250		
030		DF	BO	-	-	4°E	-	R	+7000	-		
040		TF	PALEZ	-	021° (025.3°T)	4°E	27.0	-	-	-		

**WARNING: Back-up conventional (NON-RNAV) procedure, in case of loss of RNAV 1 capability or RNAV system failure, below minimum radar vectoring altitude for RNAV SID SAL 2W only:**  
Climb straight ahead. At 730ft AMSL turn RIGHT direct to SAL NDB. MNM PDG 3.4% (207 ft/NM) to 2000 ft.

**LDZD RNAV STANDARD INSTRUMENT DEPARTURE RWY 04**

Proposed tabular description for navigation database coding

Serial number	Route	Path descriptor	Waypoint name	Flyover	Course °M (°T)	Magnetic variation	Distance (NM)	Turn direction	Altitude (ft)	Speed (kt)	Remarks	NAV SPEC
010	SAL 2W	CA	-	-	038° (041.6°T)	4°E	-	-	@730	-	MNM PDG 3.4% (207 ft/NM) to 2000 ft	RNAV 1
020		DF	SAL	-	-	4°E	-	R	-	-		

CHANGE: TMA's classification vertical limits; Parachuting zones added; Editorial.

ZADAR / Zemunik (LDZD)  
RNAV RWY 04

RAVNA 2W PALEZ 2W SAL 2W SPL 3W

**WARNING: Back-up conventional (NON-RNAV) procedure, in case of loss of RNAV 1 capability or RNAV system failure, below minimum radar vectoring altitude for RNAV SID SPL 3W only:**  
Climb straight ahead. At 730 ft AMSL turn RIGHT climbing to intercept and follow R-127 ZDA. Cross 13.0 DME ZDA at or above 4000 ft AMSL. After crossing 13.0 DME ZDA, proceed via RNAV SID SPL 3W or according to ATC instruction. MNM PDG 3.4% (207 ft/NM) to 2000 ft.

**LDZD RNAV STANDARD INSTRUMENT DEPARTURE RWY 04**

Proposed tabular description for navigation database coding

Serial number	Route	Path descriptor	Waypoint name	Flyover	Course °M (°T)	Magnetic variation	Distance (NM)	Turn direction	Altitude (ft)	Speed (kt)	Remarks	NAV SPEC
010	SPL 3W	CA	-	-	038° (041.6°T)	4°E	-	-	@730	-	MNM PDG 3.4% (207 ft/NM) to 2000 ft	RNAV 1
020		DF	ZD808	Y	-	4°E	-	R	+4000	-		
030		TF	SPL	-	127° (131.1°T)	4°E	41.4	-	-	-		

Waypoint coordinates

Waypoint name	WGS-84 latitude	WGS-84 longitude
BO	441009.29N	0151550.41E
SAL	435616.30N	0151005.20E
SPL	432947.69N	0161817.00E
RAVNA	443149N	0145130E
PALEZ	443430N	0153159E
ZD807	435613.6N	0152520.6E
ZD808	435708.8N	0153529.4E

CHANGE: TMAs classification vertical limits; Parachuting zones added; Editorial.

OVA STRANICA JE NAMJERNO OSTAVLJENA PRAZNA  
THIS PAGE INTENTIONALLY LEFT BLANK