

STANDARD DEPARTURE CHART -INSTRUMENT

RJSI / HANAMAKI

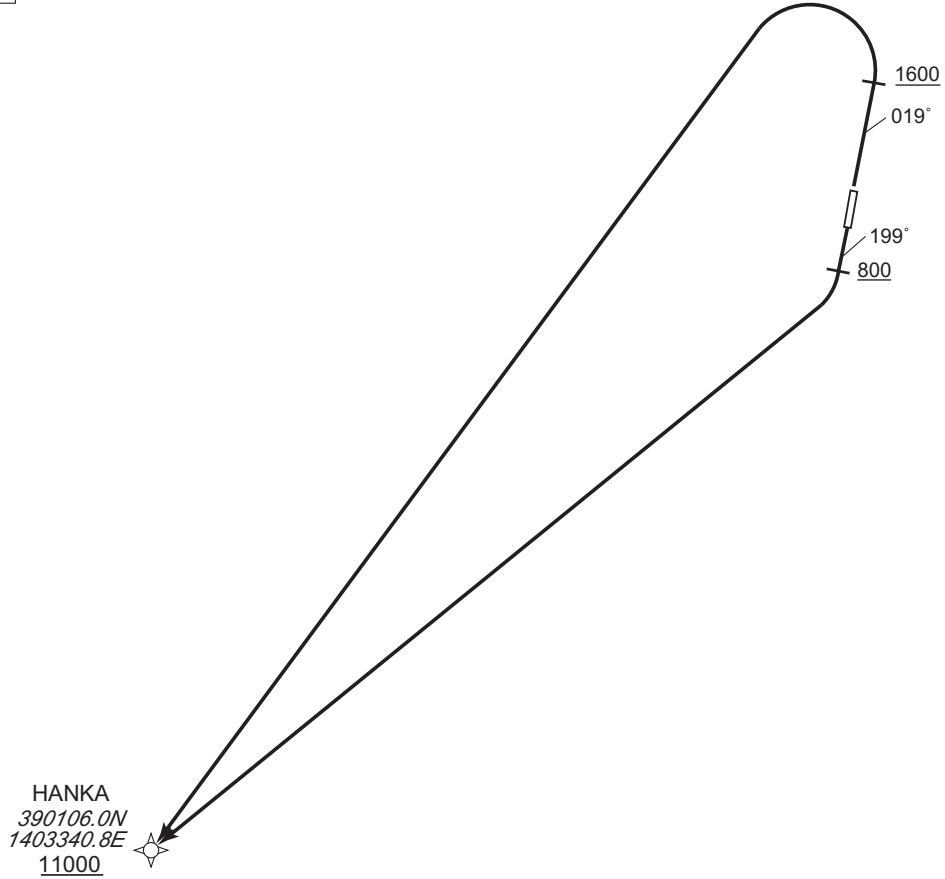
RNAV SID

HANKA ONE DEPARTURE

RNP1

Note GNSS required

VAR 9°W



RWY02 : Climb on HDG 019° at or above 1600FT, turn left direct to HANKA, at or above 11000FT.

RWY20 : Climb on HDG 199° at or above 800FT, turn right direct to HANKA, at or above 11000FT.

Note RWY02: 5.0% climb gradient required up to 3600FT.

OBST ALT 1936FT located at 5.5NM 340° FM end of RWY02.

OBST ALT 3018FT located at 8.2NM 310° FM end of RWY02.

RWY20: 5.0% climb gradient required up to 5400FT.

OBST ALT 4593FT located at 18.2NM 227° FM end of RWY20.

OBST ALT 5151FT located at 20.8NM 232° FM end of RWY20.

CHANGE : Description of VOR/DME.

RWY02

Serial Number	Path Descriptor	Waypoint Identifier	Fly Over	Course °M(°T)	Magnetic Variation	Distance (NM)	Turn Direction	Altitude (FT)	Speed (KIAS)	Vertical Angle	Navigation Specification
001	VA	-	-	019 (010.7)	-8.7	-	-	+1600	-	-	RNP1
002	DF	HANKA	-	-	-8.7	-	L	+11000	-	-	RNP1

RWY20

Serial Number	Path Descriptor	Waypoint Identifier	Fly Over	Course °M(°T)	Magnetic Variation	Distance (NM)	Turn Direction	Altitude (FT)	Speed (KIAS)	Vertical Angle	Navigation Specification
001	VA	-	-	199 (190.7)	-8.7	-	-	+800	-	-	RNP1
002	DF	HANKA	-	-	-8.7	-	R	+11000	-	-	RNP1

**INTENTIONALLY LEFT BLANK**