

STANDARD ARRIVAL CHART  
INSTRUMENT (STAR) - ICAO

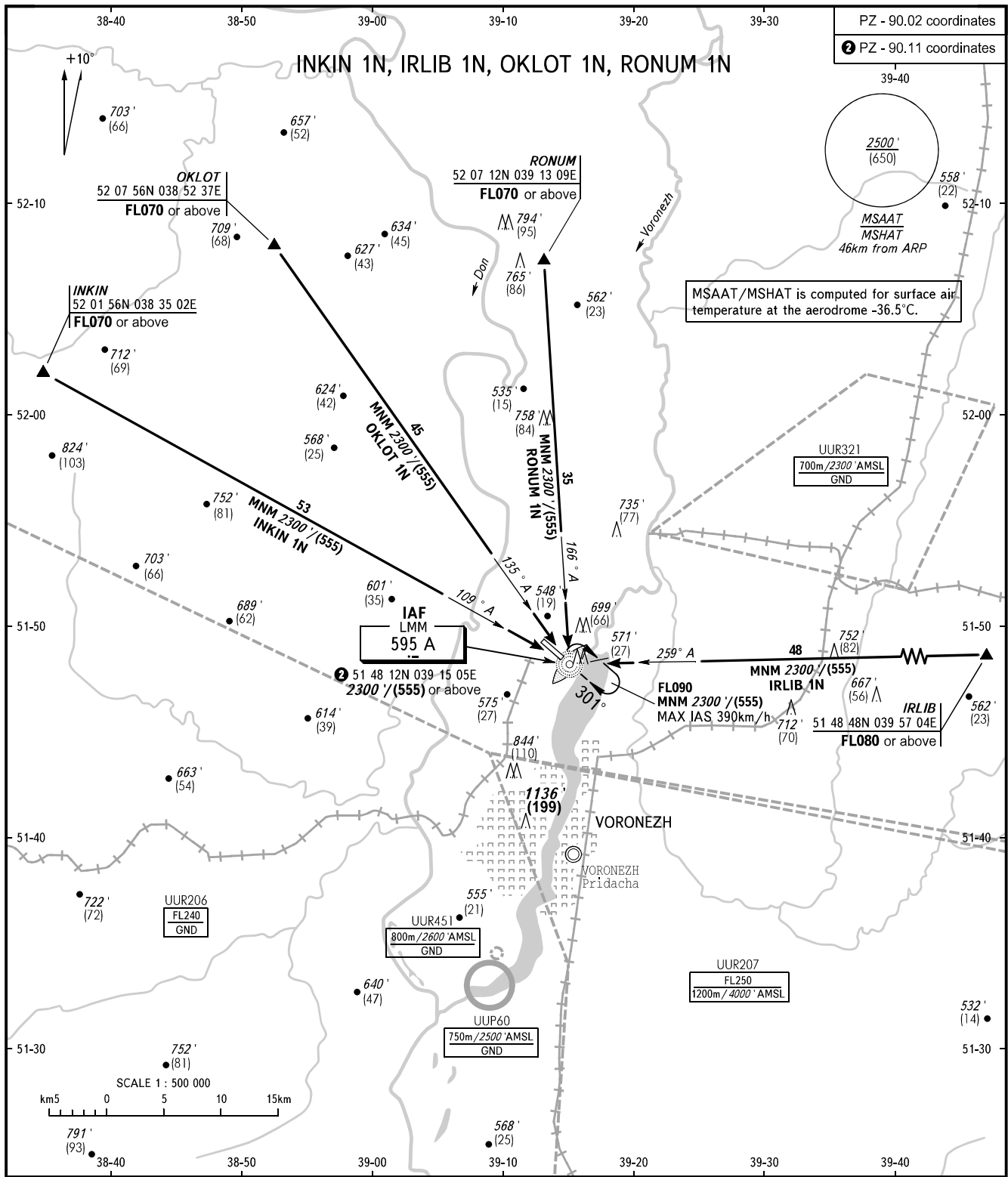
VORONEZH, RUSSIA

CHERTOVITSKOYE

RWY 30

TRANSITION  
LEVEL: 1

PZ - 90.02 coordinates  
2 PZ - 90.11 coordinates



MSAAT/MSHAT is computed for surface air temperature at the aerodrome -36.5°C.

TOWER 118.300

- 1 TRANSITION LEVEL:
- FL060 when QNH is 1013 hPa (760mm mercury column) or above;
  - FL070 when QNH is 977 hPa (733mm mercury column) or above, but less than 1013 hPa (760mm mercury column);
  - FL080 when QNH is less than 977 hPa (733mm mercury column).

**WARNING**  
Holding area is AVBL, when UUR206, UUR207 are not active.

BEARINGS AND TRACKS ARE MAGNETIC  
ALTITUDES IN FEET  
HEIGHTS IN METRES  
ELEVATIONS IN FEET AND METRES  
DISTANCES IN KILOMETRES

Alt set: -QNH(QFE on req);  
-hPa(mm on req).