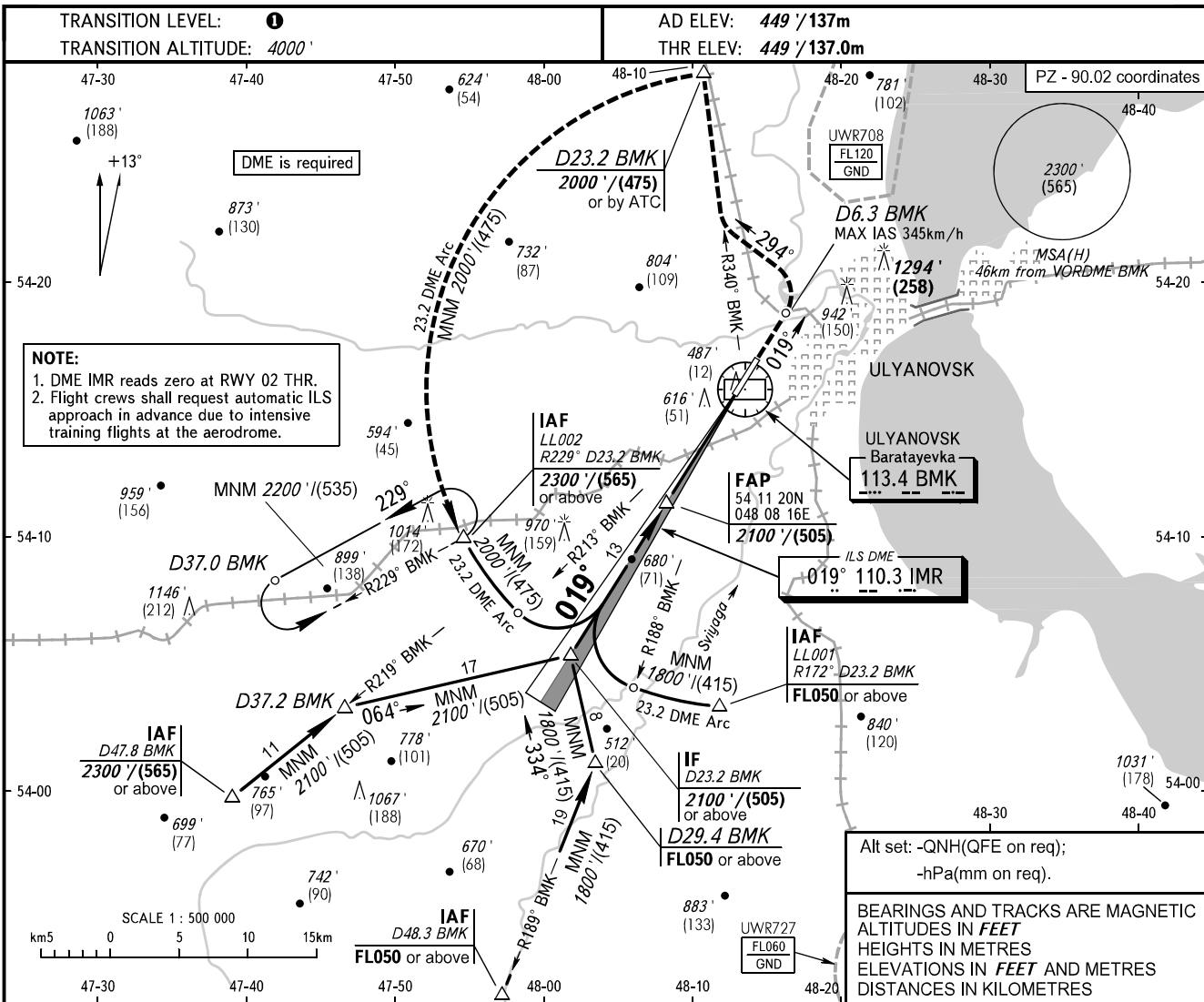


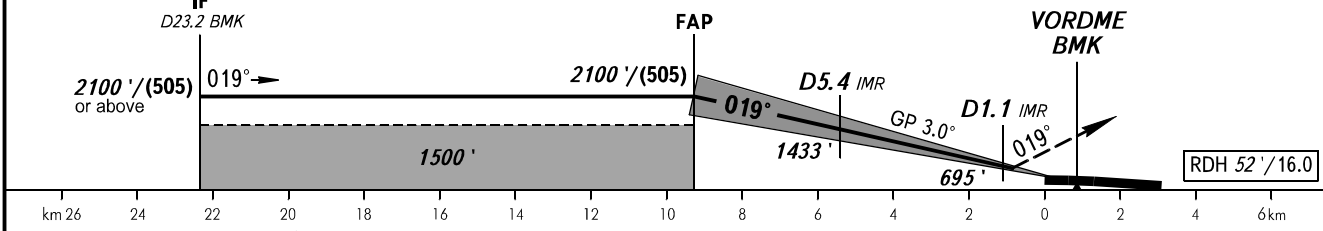
**INSTRUMENT
APPROACH
CHART - ICAO**

RADAR **120.800**
PRECISION **120.400**

**ULYANOVSK, RUSSIA
BARATAYEVKA
ILS Y CAT I RWY 02**



MISSED APPROACH
Climb straight ahead to D6.3 BMK, turn LEFT onto track 294°, then intercept R340° BMK and proceed to R340° D23.2 BMK climbing to 2000' / (475) or as instructed by ATC, then turn LEFT and execute 23.2 DME arc approach.



OCA(H)		A	B	C	D
Straight-in Approach	CAT I	617' (168')	629' (180')	637' (188')	648' (199')
Circling		920' (470')	1010' (560')	1340' (890')	1340' (890')

1 **TRANSITION LEVEL:**
- FL050 when QNH is 1013 hPa (760mm mercury column) or above;
- FL060 when QNH is 977 hPa (733mm mercury column) or above, but less than 1013 hPa (760mm mercury column);
- FL070 when QNH is less than 977 hPa (733mm mercury column).

2 Visual manoeuvring east of the AD is PROHIBITED.

GROUND SPEED	km/h	150	180	210	240	270	300	330	360	390
RATE OF DESCENT	m/s	2.2	2.6	3.0	3.5	3.9	4.3	4.8	5.2	5.6
RATE OF DESCENT	ft/min	427	512	597	682	768	853	938	1024	1109