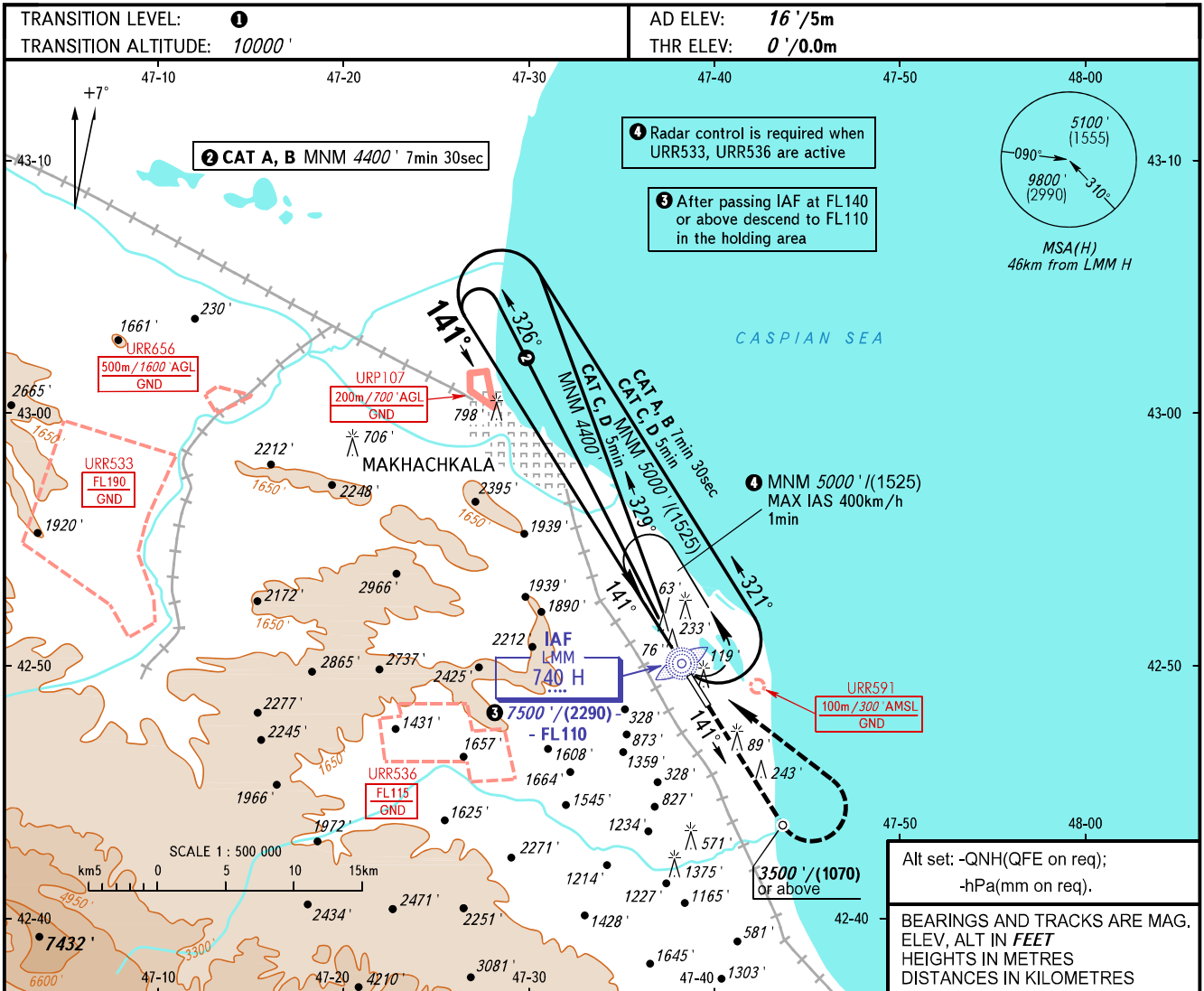


**INSTRUMENT
APPROACH
CHART - ICAO**

RADAR
START 121.300
121.300

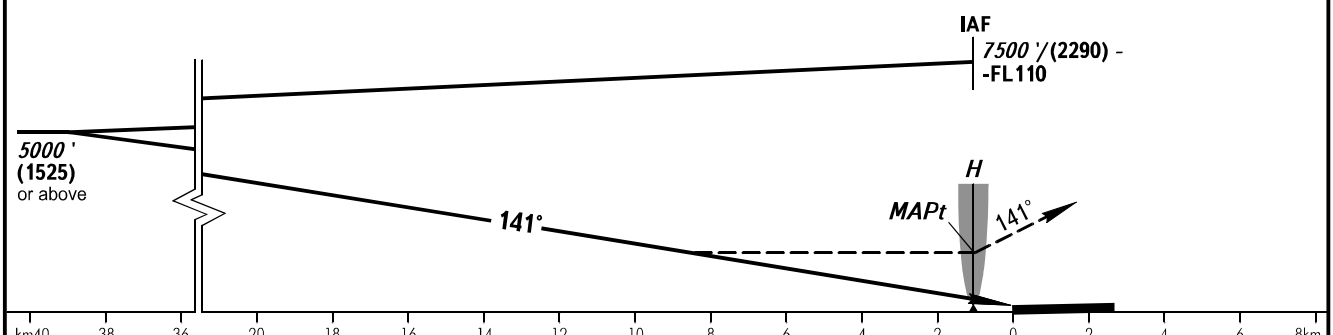
MAKHACHKALA, RUSSIA
UYTASH
NDB X RWY 14



Alt set: -QNH(QFE on req);
-hPa(mm on req).

BEARINGS AND TRACKS ARE MAG.
ELEV, ALT IN FEET
HEIGHTS IN METRES
DISTANCES IN KILOMETRES

MISSED APPROACH
Climb on track 141° to
3500'/(1070) or above, then
turn LEFT to LMM H
climbing to 5000'/(1525)
or above.



OCA(H)		A	B	C	D
Straight-in Approach		1870' (1870')	1870' (1870')	1870' (1870')	1870' (1870')
Circling		1870' (1870')	1870' (1870')	1870' (1870')	1870' (1870')

1 TRANSITION LEVEL:
- FL110 when QNH is 1013 hPa (760mm mercury column) or above;
- FL120 when QNH is 977 hPa (733mm mercury column) or above,
but less than 1013 hPa (760mm mercury column);
- FL130 when QNH is less than 977 hPa
(733mm mercury column).

WARNING:
1. Visual manoeuvring west of the aerodrome is PROHIBITED.
2. Turn before passing MAPt is PROHIBITED.
3. MAPt at LMM H. Timing not authorized for defining MAPt.

CHANGE: New chart