

STANDARD DEPARTURE CHART -INSTRUMENT

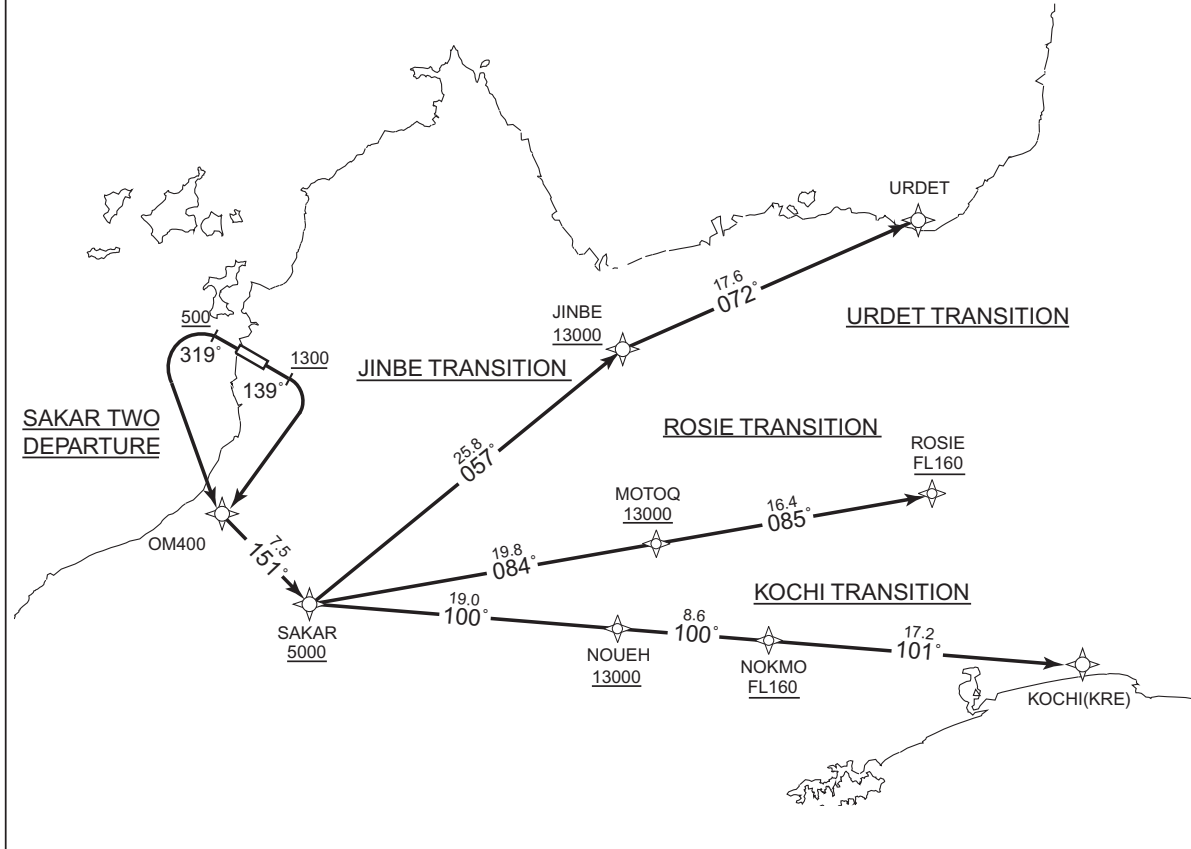
RJOM / MATSUYAMA

RNAV SID and TRANSITION

SAKAR TWO DEPARTURE URDET TRANSITION / JINBE TRANSITION ROSIE TRANSITION / KOCHI TRANSITION	RNP1
---	------

Note GNSS required.

VAR 8° W



CHANGE : PROC renamed(SAKAR TWO DEPARTURE). URDET TRANSITION, URDET established.
 RANDY TRANSITION, RANDY abolished. VAR. PROC course.

SAKAR TWO DEPARTURE

RWY14 : Climb on HDG139° at or above 1300FT, turn right direct to OM400, to SAKAR at or above 5000FT.

RWY32 : Climb on HDG319° at or above 500FT, turn left direct to OM400, to SAKAR at or above 5000FT.

NOTE RWY14 : 7.0% climb gradient required up to 3200FT.

OBST ALT 2822FT located at 7.6NM 173° FM end of RWY14.

No turn before DER.

RWY32 : 5.3% climb gradient required up to 3600FT.

OBST ALT 3084FT located at 10.5NM 178° FM end of RWY32.

URDET TRANSITION

From SAKAR at or above 5000FT, to JINBE at or above 13000FT, to URDET.

JINBE TRANSITION

From SAKAR at or above 5000FT, to JINBE at or above 13000FT.

ROSIE TRANSITION

From SAKAR at or above 5000FT, to MOTOQ at or above 13000FT, to ROSIE at or above FL160.

KOCHI TRANSITION

From SAKAR at or above 5000FT, to NOUEH at or above 13000FT, to NOKMO at or above FL160, to KRE.

STANDARD DEPARTURE CHART -INSTRUMENT

RJOM / MATSUYAMA

RNAV SID and TRANSITION

SAKAR TWO DEPARTURE

RWY14

Serial Number	Path Descriptor	Waypoint Identifier	Fly Over	Course °M(°T)	Magnetic Variation	Distance (NM)	Turn Direction	Altitude (FT)	Speed (KIAS)	Vertical Angle	Navigation Specification
001	VA	-	-	139 (130.7)	-8.1	-	-	+1300	-	-	RNP1
002	DF	OM400	-	-	-8.1	-	R	-	-	-	RNP1
003	TF	SAKAR	-	151 (142.7)	-8.1	7.5	-	+5000	-	-	RNP1

RWY32

Serial Number	Path Descriptor	Waypoint Identifier	Fly Over	Course °M(°T)	Magnetic Variation	Distance (NM)	Turn Direction	Altitude (FT)	Speed (KIAS)	Vertical Angle	Navigation Specification
001	VA	-	-	319 (310.7)	-8.1	-	-	+500	-	-	RNP1
002	DF	OM400	-	-	-8.1	-	L	-	-	-	RNP1
003	TF	SAKAR	-	151 (142.7)	-8.1	7.5	-	+5000	-	-	RNP1

URDET TRANSITION

Serial Number	Path Descriptor	Waypoint Identifier	Fly Over	Course °M(°T)	Magnetic Variation	Distance (NM)	Turn Direction	Altitude (FT)	Speed (KIAS)	Vertical Angle	Navigation Specification
001	IF	SAKAR	-	-	-8.1	-	-	+5000	-	-	RNP1
002	TF	JINBE	-	057 (048.8)	-8.1	25.8	-	+13000	-	-	RNP1
003	TF	URDET	-	072 (064.0)	-8.1	17.6	-	-	-	-	RNP1

JINBE TRANSITION

Serial Number	Path Descriptor	Waypoint Identifier	Fly Over	Course °M(°T)	Magnetic Variation	Distance (NM)	Turn Direction	Altitude (FT)	Speed (KIAS)	Vertical Angle	Navigation Specification
001	IF	SAKAR	-	-	-8.1	-	-	+5000	-	-	RNP1
002	TF	JINBE	-	057 (048.8)	-8.1	25.8	-	+13000	-	-	RNP1

CHANGE : PROC renamed(SAKAR TWO DEP, URDET TRANSITION). URDET established. RANDY abolished. PROC course. VAR.

STANDARD DEPARTURE CHART -INSTRUMENT

RJOM / MATSUYAMA

RNAV SID and TRANSITION

ROSIE TRANSITION

Serial Number	Path Descriptor	Waypoint Identifier	Fly Over	Course °M(°T)	Magnetic Variation	Distance (NM)	Turn Direction	Altitude (FT)	Speed (KIAS)	Vertical Angle	Navigation Specification
001	IF	SAKAR	-	-	-8.1	-	-	+5000	-	-	RNP1
002	TF	MOTOQ	-	084 (076.4)	-8.1	19.8	-	+13000	-	-	RNP1
003	TF	ROSIE	-	085 (076.6)	-8.1	16.4	-	+FL160	-	-	RNP1

KOCHI TRANSITION

Serial Number	Path Descriptor	Waypoint Identifier	Fly Over	Course °M(°T)	Magnetic Variation	Distance (NM)	Turn Direction	Altitude (FT)	Speed (KIAS)	Vertical Angle	Navigation Specification
001	IF	SAKAR	-	-	-8.1	-	-	+5000	-	-	RNP1
002	TF	NOUEH	-	100 (092.2)	-8.1	19.0	-	+13000	-	-	RNP1
003	TF	NOKMO	-	100 (092.4)	-8.1	8.6	-	+FL160	-	-	RNP1
004	TF	KRE	-	101 (092.5)	-8.1	17.2	-	-	-	-	RNP1

Waypoint Coordinates

Waypoint Identifier	Coordinates	Waypoint Identifier	Coordinates
OM400	334023.4N / 1324141.5E	ROSIE	334248.4N / 1332926.3E
SAKAR	333425.3N / 1324708.8E	NOUEH	333339.4N / 1330955.5E
JINBE	335120.9N / 1331027.5E	NOKMO	333317.2N / 1332014.0E
URDET	335902.5N / 1332930.9E	KRE	333230.4N / 1334048.6E
MOTOQ	333902.8N / 1331018.4E		

CHANGE : PROC course. VAR. Waypoint Coordinates added.