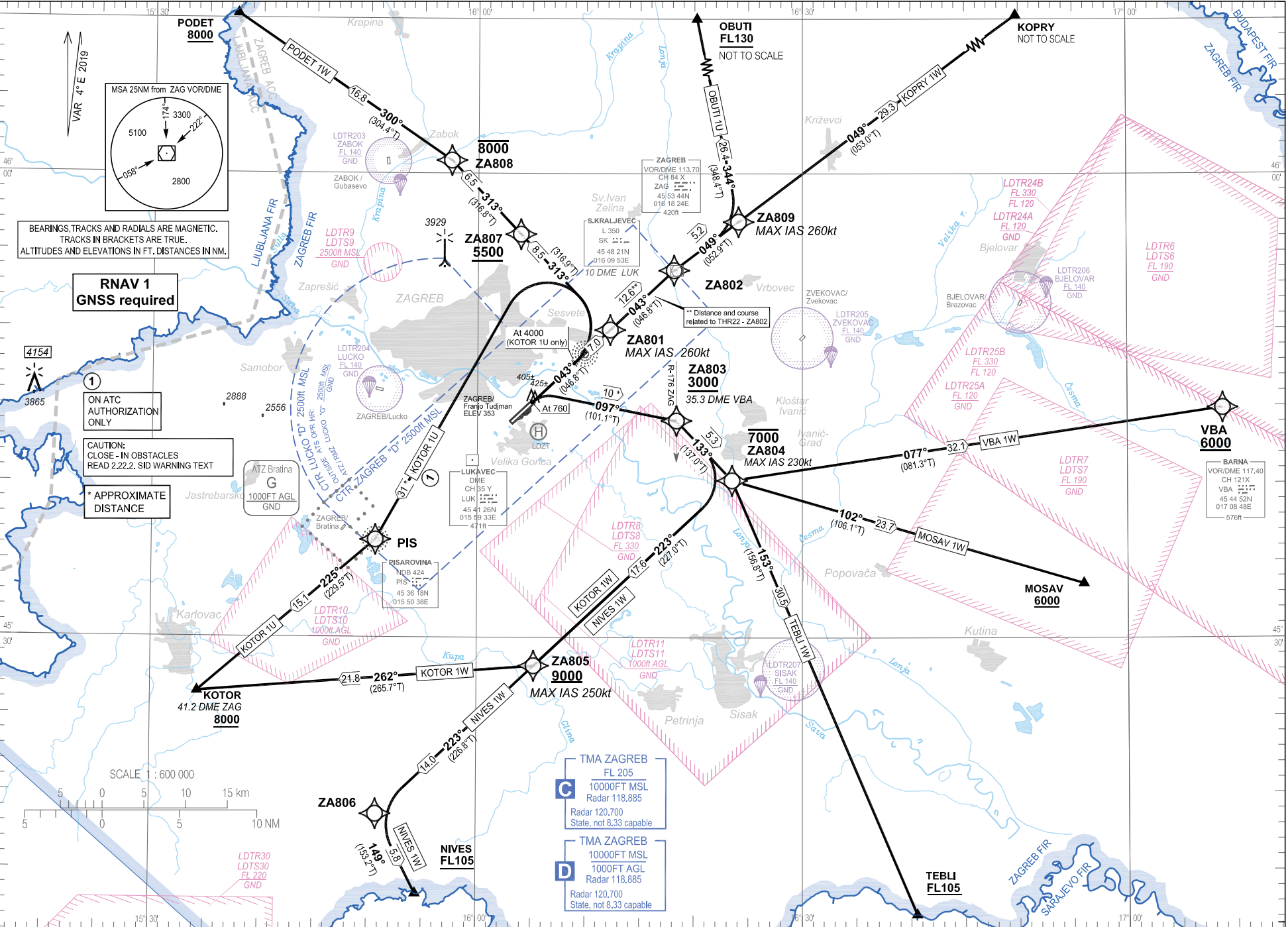


STANDARD DEPARTURE CHART  
INSTRUMENT (SID) - ICAO

TRANSITION ALTITUDE  
10 000

ZAGREB ATIS	124.575
ZAGREB TOWER	118.300
ZAGREB RADAR	118.885
ZAGREB RADAR	120.700 State, not 8.33 capable
ZAGREB / Franjo Tuđman (LDZA)	
PODET 1W	KOPRY 1W
MOSAV 1W	TEBLI 1W
KOTOR 1W	KOTOR 1U
NIVES 1W	RNAV RMY 04

Change: TMA classification vertical limits; Parachuting zones; Editorial.



## ZAGREB / Franjo Tudjman (LDZA)

RNAV RWY 04

PODET 1W	OBUTI 1U	KOPRY 1W
VBA 1W	MOSAV 1W	TEBLI 1W
NIVES 1W	KOTOR 1W	KOTOR 1U

## GENERAL INFORMATION AND REQUIREMENTS FOR ALL SIDs

- Calculation of the SIDs is based on an all-engines operative minimum net climb gradient of 3.3 per cent (201 ft/NM). Where a greater climb gradient for a specific SID (or part of SID) is necessary this is indicated in the tabular description of the route.
- After take-off climb initially 6000 ft and contact Zagreb Radar on 118.885 MHz (Zagreb Radar 120.700 MHz State, not 8.33 capable).

CAUTION: Close-in obstacle. Read 2.22.2. SID warning text.

## WARNING

**Back-up conventional (NON-RNAV) procedure, in case of loss of RNAV 1 capability or RNAV system failure, below minimum radar vectoring altitude for RNAV SID PODET 1W only:**

Climb straight ahead to SK L (10.0 DME LUK). At SK L (10.0 DME LUK) turn LEFT climbing on track 313°. On passing 5500 ft AMSL proceed via RNAV SID PODET 1W or according to ATC instruction. MNM PDG 6.0% (365 ft/NM) to 5500 ft AMSL.

## LDZA RNAV STANDARD INSTRUMENT DEPARTURE RWY 04

## Proposed tabular description for navigation database coding

Serial number	Route	Path descriptor	Waypoint name	Flyover	Course °M (°T)	Magnetic variation	Distance (NM)	Turn direction	Altitude (ft)	Speed (kt)	Remarks	NAV SPEC
010	PODET 1W	CF	ZA801	-	043° (046.8°T)	4°E	7.0	-	-	-260	MNM PDG 6.0% (365 ft/NM) to 5500 ft AMSL	RNAV 1
020		TF	ZA807	-	313° (316.9°T)	4°E	8.5	-	+5500	-		
030		TF	ZA808	-	313° (316.8°T)	4°E	6.5	-	-8000	-		
040		TF	PODET	-	300° (304.4°T)	4°E	16.8	-	+8000	-		

## LDZA RNAV STANDARD INSTRUMENT DEPARTURE RWY 04

## Proposed tabular description for navigation database coding

Serial number	Route	Path descriptor	Waypoint name	Flyover	Course °M (°T)	Magnetic variation	Distance (NM)	Turn direction	Altitude (ft)	Speed (kt)	Remarks	NAV SPEC
010	OBUTI 1U	CF	ZA802	-	043° (046.8°T)	4°E	12.6	-	-	-	-	RNAV 1
020		TF	ZA809	-	049° (052.9°T)	4°E	5.2	-	-	-260		
030		TF	OBUTI	-	344° (348.4°T)	4°E	26.4	-	+FL130	-		
010	KOPRY 1W	CF	ZA802	-	043° (046.8°T)	4°E	12.6	-	-	-	-	RNAV 1
020		TF	ZA809	-	049° (052.9°T)	4°E	5.2	-	-	-260		
030		TF	KOPRY	-	049° (053.0°T)	4°E	29.3	-	-	-		

Change: TMA classification vertical limits; Parachuting zones; Editorial.

**WARNING**

**Back-up conventional (NON-RNAV) procedure, in case of loss of RNAV 1 capability or RNAV system failure, below minimum radar vectoring altitude for RNAV SIDs VBA 1W, MOSAV 1W, TEBLI 1W, NIVES 1W and KOTOR 1W only:**

Climb straight ahead. At 760 ft AMSL turn RIGHT climbing on track 097°. Cross 35.3 DME VBA (R-176 ZAG) at or above 3000 ft AMSL. After passing 35.3 DME VBA (R-176 ZAG) proceed via RNAV SID flight procedure filed in FPL or according to ATC instruction. MNM PDG 4.0% (243 ft/NM) to 1900 ft AMSL.

**LDZA RNAV STANDARD INSTRUMENT DEPARTURE RWY 04**

Proposed tabular description for navigation database coding

Serial number	Route	Path descriptor	Waypoint name	Flyover	Course °M (°T)	Magnetic variation	Distance (NM)	Turn direction	Altitude (ft)	Speed (kt)	Remarks	NAV SPEC
010	VBA 1W	CA	-	-	043° (046.8°T)	4°E	-	-	@760	-	MNM PDG 4.0% (243 ft/NM) to 1900 ft AMSL	RNAV 1
020		CF	ZA803	-	097° (101.1°T)	4°E	-	-	+3000	-		
030		TF	ZA804	-	133° (137.0°T)	4°E	5.3	-	-7000	-230		
040		TF	VBA	-	077° (081.3°T)	4°E	32.1	-	+6000	-		
010	MOSAV 1W	CA	-	-	043° (046.8°T)	4°E	-	-	@760	-	MNM PDG 4.0% (243 ft/NM) to 1900 ft AMSL	RNAV 1
020		CF	ZA803	-	097° (101.1°T)	4°E	-	-	+3000	-		
030		TF	ZA804	-	133° (137.0°T)	4°E	5.3	-	-7000	-230		
040		TF	MOSAV	-	102° (106.1°T)	4°E	23.7	-	+6000	-		
010	TEBLI 1W	CA	-	-	043° (046.8°T)	4°E	-	-	@760	-	MNM PDG 4.0% (243 ft/NM) to 1900 ft AMSL	RNAV 1
020		CF	ZA803	-	097° (101.1°T)	4°E	-	-	+3000	-		
030		TF	ZA804	-	133° (137.0°T)	4°E	5.3	-	-7000	-230		
040		TF	TEBLI	-	153° (156.8°T)	4°E	30.5	-	+FL105	-		
010	NIVES 1W	CA	-	-	043° (046.8°T)	4°E	-	-	@760	-	MNM PDG 4.0% (243 ft/NM) to 1900 ft AMSL	RNAV 1
020		CF	ZA803	-	097° (101.1°T)	4°E	-	-	+3000	-		
030		TF	ZA804	-	133° (137.0°T)	4°E	5.3	-	-7000	-230		
040		TF	ZA805	-	223° (227.0°T)	4°E	17.6	-	+9000	-250		
050		TF	ZA806	-	223° (226.8°T)	4°E	14.0	-	-	-		
060		TF	NIVES	-	149° (153.2°T)	4°E	5.8	-	+FL105	-		
010	KOTOR 1W	CA	-	-	043° (046.8°T)	4°E	-	-	@760	-	MNM PDG 4.0% (243 ft/NM) to 1900 ft AMSL	RNAV 1
020		CF	ZA803	-	097° (101.1°T)	4°E	-	-	+3000	-		
030		TF	ZA804	-	133° (137.0°T)	4°E	5.3	-	-7000	-230		
040		TF	ZA805	-	223° (227.0°T)	4°E	17.6	-	+9000	-250		
050		TF	KOTOR	-	262° (265.7°T)	4°E	21.8	-	-	-		

Change: TMA classification vertical limits; Parachuting zones; Editorial.

## ZAGREB / Franjo Tuđman (LDZA)

PODET 1W OBUTI 1U KOPRY 1W  
 VBA 1W MOSAV 1W TEBLI 1W  
 NIVES 1W KOTOR 1W KOTOR 1U

RNAV RWY 04

**WARNING**

**Back-up conventional (NON-RNAV) procedure, in case of loss of RNAV 1 capability or RNAV system failure, below minimum radar vectoring altitude for RNAV SID KOTOR 1U only:**

Climb straight ahead. At 4000 ft AMSL turn LEFT climbing to PIS NDB. On passing 5500 ft AMSL proceed via RNAV SID KOTOR 1U or according to ATC instruction.

**LDZA RNAV STANDARD INSTRUMENT DEPARTURE RWY 04**

Proposed tabular description for navigation database coding

Serial number	Route	Path descriptor	Waypoint name	Flyover	Course °M (°T)	Magnetic variation	Distance (NM)	Turn direction	Altitude (ft)	Speed (kt)	Remarks	NAV SPEC
010	KOTOR 1U	CA	-	-	043° (046.8°T)	4°E	-	-	@4000	-	On ATC authorization only	RNAV 1
020		DF	PIS	-	-	4°E	-	L	-	-		
030		TF	KOTOR	-	225° (229.5°T)	4°E	15.1	-	+8000	-		

## Waypoint coordinates

Waypoint name	WGS-84 latitude	WGS-84 longitude
KOPRY	461425N	0165746E
KOTOR	452628N	0153420E
MOSAV	453331N	0165557E
NIVES	451326N	0155427E
OBUTI	462242N	0161627E
PODET	461017N	0153736E
TEBLI	451205N	0164033E
PIS	453618.10N	0155038.39E
VBA	454452.08N	0170848.29E
ZA801	454953.6N	0161214.1E
ZA802	455344.7N	0161807.9E
ZA803	454401.4N	0161822.2E
ZA804	454009.7N	0162330.6E
ZA805	452810.0N	0160514.7E
ZA806	451834.1N	0155046.6E
ZA807	455603.8N	0160357.0E
ZA808	460049.7N	0155731.4E
ZA809	455653.0N	0162405.1E

Change: TMA classification vertical limits; Parachuting zones; Editorial.