

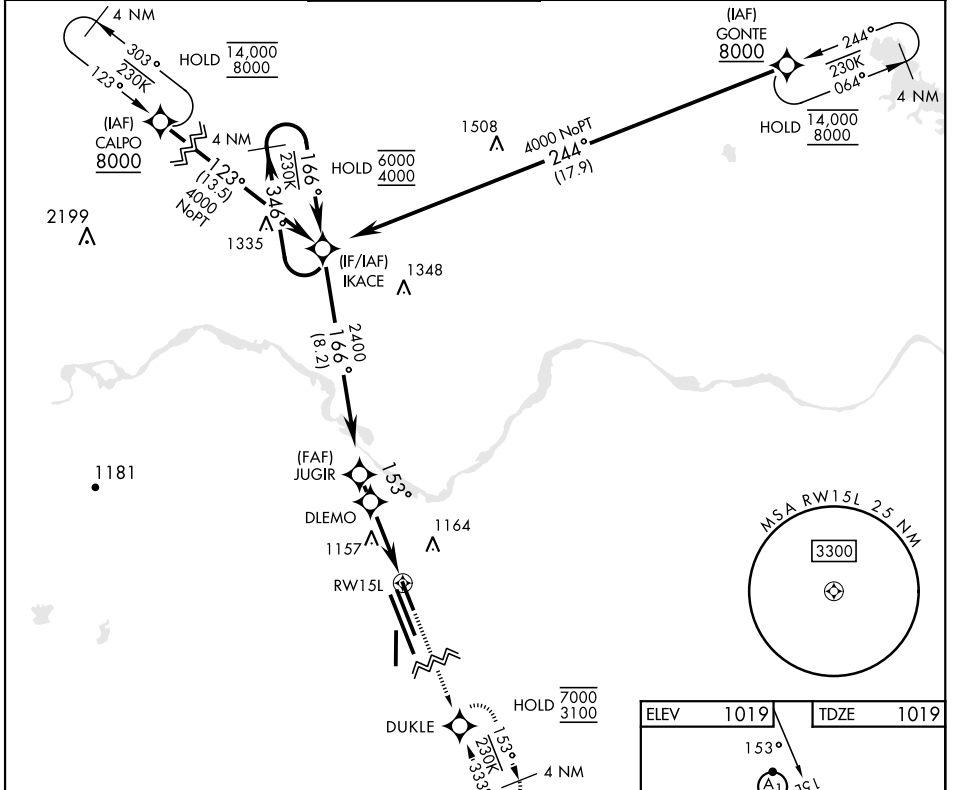
RNAV (GPS) RWY 15L

APCH CRS	Rwy Idg	6000
153°	TDZE	1019
	Arprt Elev	1019

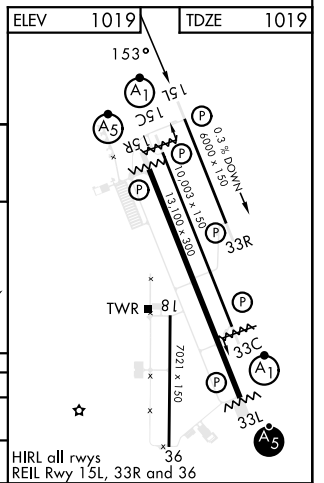
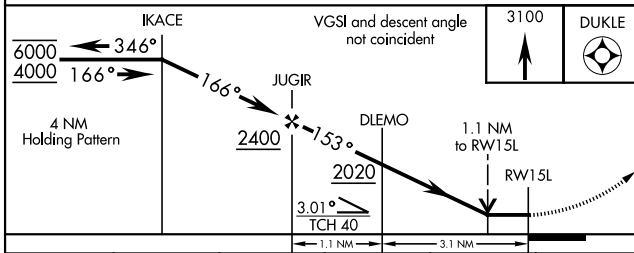
[USAF]

SHEPPARD AFB/WICHITA FALLS MUNI (KSPS)

RNP APCH - GFS		MISSED APPROACH: Climb and maintain 3100, track 153° direct DUKLE and hold.			
ATIS ★	APP CON	TOWER ★	GND CON	CLNC DEL	ASR
132.05 269.9	118.2 269.025	119.75 0 279.525 (CTAF)	125.5 289.4	121.2 282.225	



EMERG SAFE ALT 100 NM 4600



CATEGORY	A	B	C	D	E
LNAV MDA	NA	1420-1 401 (500-1)	1420-1½ 401 (500-1½)		NA
CIRCLING*	NA	1480-1 461 (500-1)	1480-1½ 461 (500-1½)	2100-3 1081 (1100-3)	NA

WICHITA FALLS, TEXAS 33°59'N-98°30'W SHEPPARD AFB/WICHITA FALLS MUNI (KSPS)

Amtd 3 23JAN25

RNAV (GPS) RWY 15L

SC-2, 20 MAR 2025 to 17 APR 2025

SC-2, 20 MAR 2025 to 17 APR 2025