

STANDARD DEPARTURE CHART - INSTRUMENT

VAR9° W

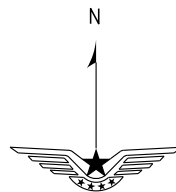
D-ATIS 126.25
TWR 118.85(124.35)

ZYCC CHANGCHUN/Longjia RNAV RWY06(IDVOT/LEMOT)

BEARINGS ARE MAGNETIC.
ALTITUDES, ELEVATIONS
AND HEIGHTS IN METERS.
DME DISTANCES IN
NAUTICAL MILES.
DISTANCES IN KM.

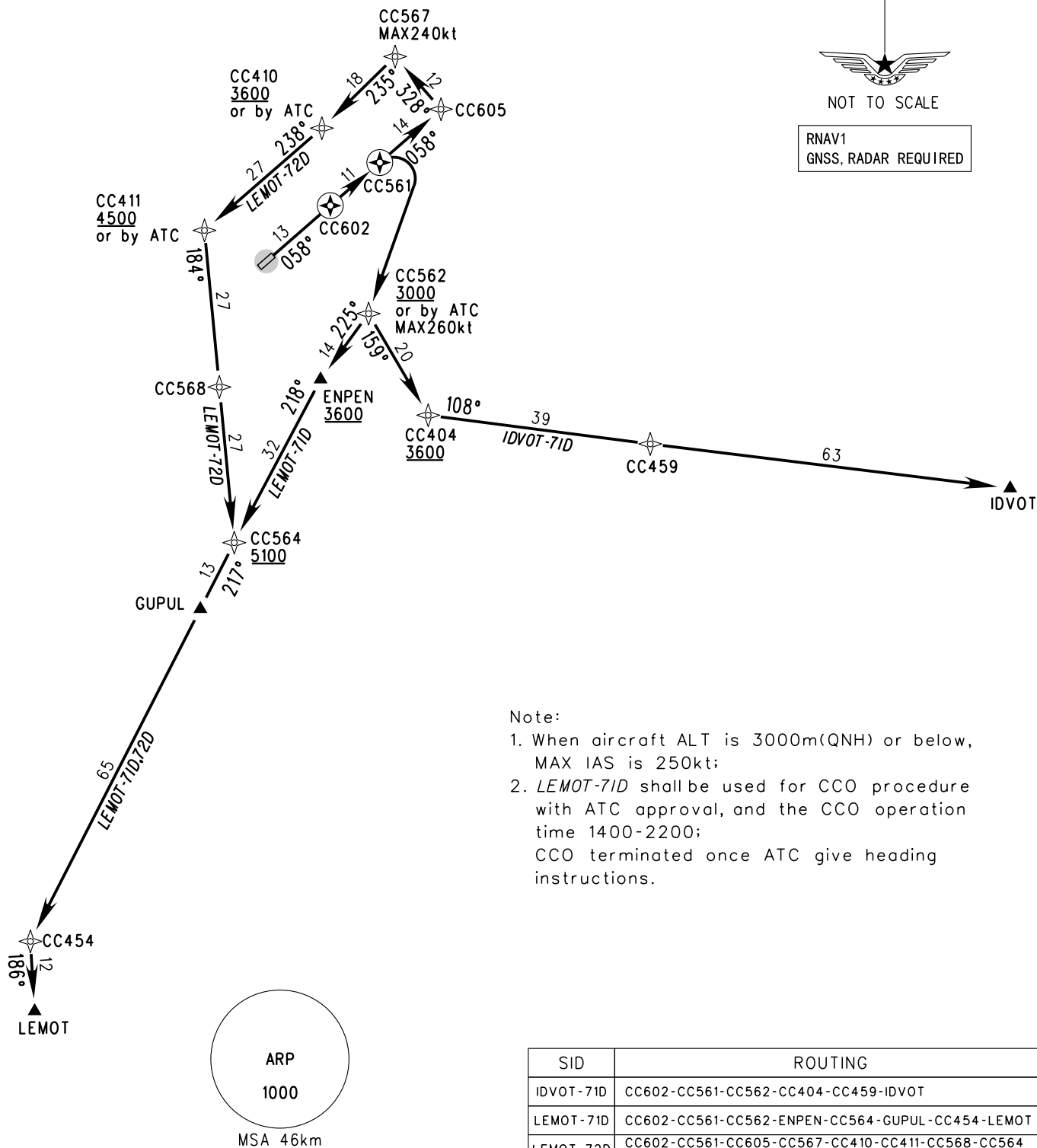
APP01 119.45(127.9)
APP02 125.25(127.9)
APP03 120.2(127.9)

TL 3600
TA 3000
3300(QNH ≥ 1031hPa)
2700(QNH ≤ 979hPa)



NOT TO SCALE

RNAV1
GNSS, RADAR REQUIRED



Note:

- When aircraft ALT is 3000m(QNH) or below, MAX IAS is 250kt;
- LEMOT-71D shall be used for CCO procedure with ATC approval, and the CCO operation time 1400-2200; CCO terminated once ATC give heading instructions.

SID	ROUTING
IDVOT-71D	CC602-CC561-CC562-CC404-CC459-IDVOT
LEMOT-71D	CC602-CC561-CC562-ENPEN-CC564-GUPUL-CC454-LEMOT
LEMOT-72D	CC602-CC561-CC605-CC567-CC410-CC411-CC568-CC564-GUPUL-CC454-LEMOT

Changes: APP03.