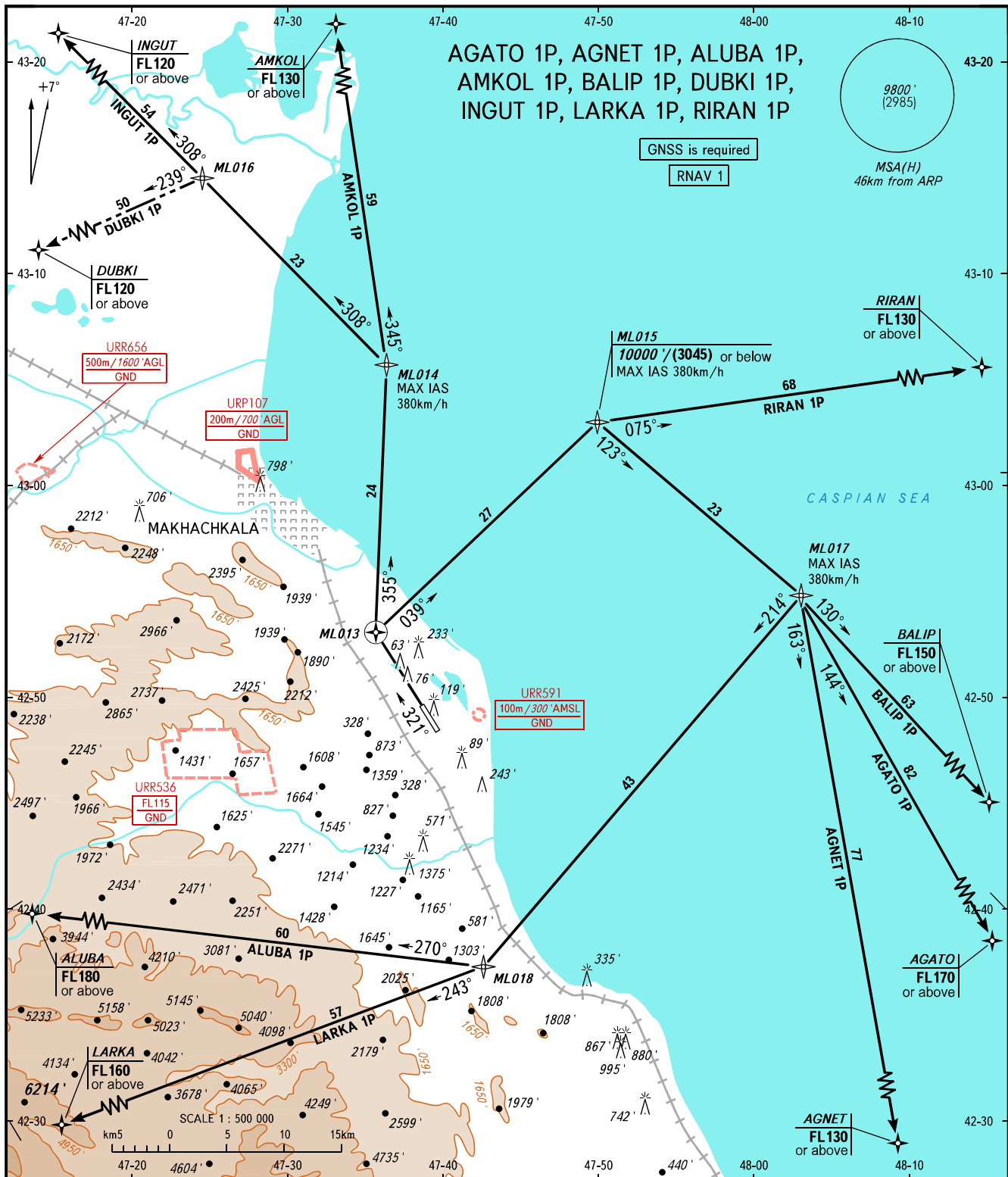


STANDARD DEPARTURE CHART
INSTRUMENT (SID) - ICAO

TRANSITION
ALTITUDE : 10000'

MAKHACHKALA, RUSSIA

UYTASH
RNAV RWY 32



AGATO 1P, AGNET 1P, ALUBA 1P,
AMKOL 1P, BALIP 1P, DUBKI 1P,
INGUT 1P, LARKA 1P, RIRAN 1P

GNS is required

RNAV 1

9800'
(2985)
MSA(H)
46km from ARP

START 121.300
RADAR 121.300
APPROACH 119.700

The minimum climb gradients are as follows
(required due to the airspace structure):

- 3.7% up to FL170 for AGATO 1P;
- 5.4% up to FL130 for AMKOL 1P;
- 3.8% up to FL150 for BALIP 1P;
- 3.6% up to FL120 for DUBKI 1P;
- 3.4% up to FL120 for INGUT 1P;
- 3.8% up to FL130 for RIRAN 1P.

BEARINGS AND TRACKS ARE MAGNETIC
ALTITUDES AND ELEVATIONS IN FEET
HEIGHTS IN METRES
DISTANCES IN KILOMETRES

Alt set: -QNH(QFE on req);
-hPa(mm on req).