

STANDARD DEPARTURE CHART -INSTRUMENT

RJAA / NARITA INTL

SID

SAKURA FIVE DEPARTURE

RWY 16R : Climb via NRE R157 to 14.0DME, turn left to intercept and proceed via NRE R129 to NRE VOR/DME, via NRE R271 to TETRA.  
 Cross TETRA at or above 12000FT.

Cross TETRA at or above 12000FT.

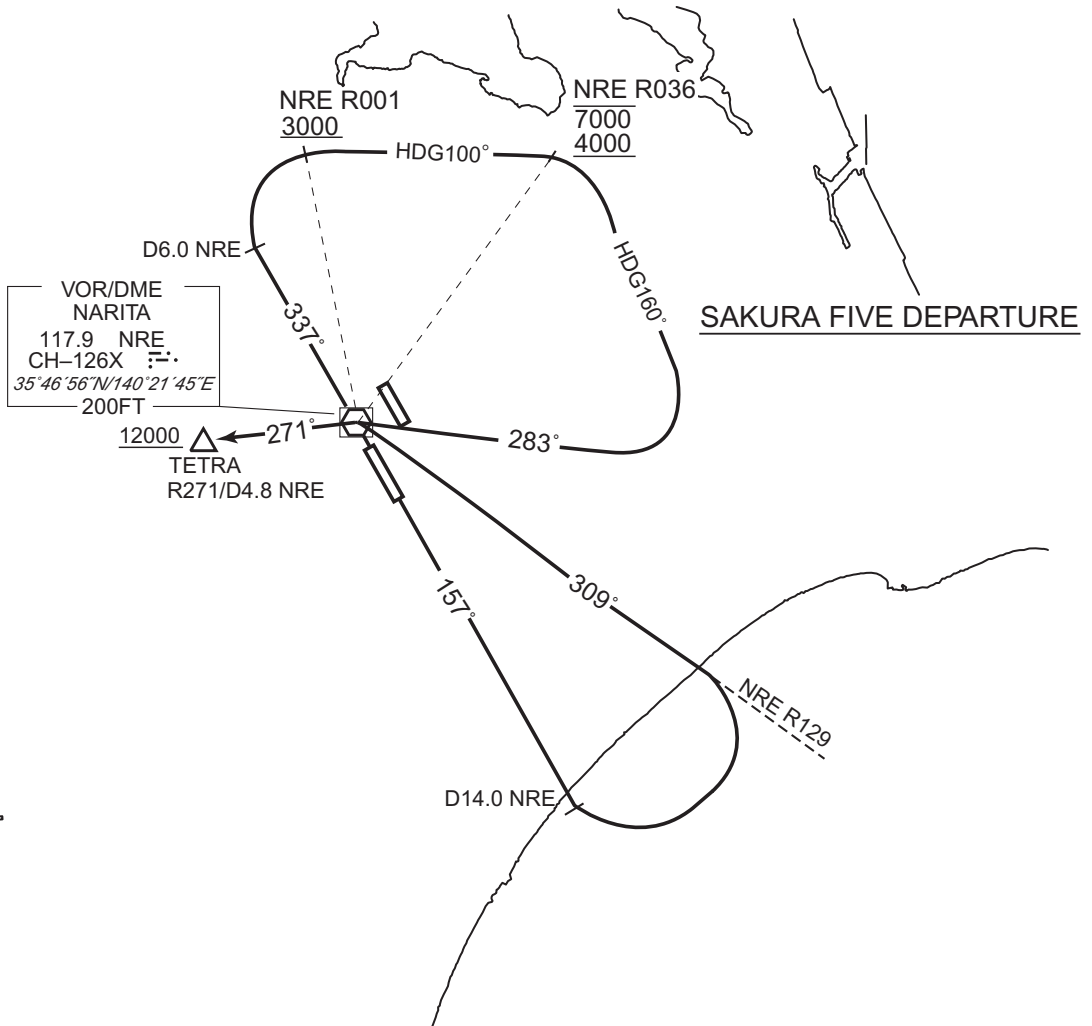
RWY 16L : (Not established)

RWY 34L : Climb via NRE R337 to 6.0DME, turn right HDG100° until crossing NRE R036, turn right HDG160° to intercept and proceed via NRE R103 to NRE VOR/DME, via NRE R271 to TETRA.  
 Cross NRE R001 at or above 3000FT,  
 cross NRE R036 between 4000FT and 7000FT,  
 cross TETRA at or above 12000FT.

Cross NRE R001 at or above 3000FT,  
 cross NRE R036 between 4000FT and 7000FT,  
 cross TETRA at or above 12000FT.

RWY 34R : (Not established)

CHANGE : PROC renamed. PROC FM RWY 16L/34R abolished. HOKUSO VOR/DME(HKE) abolished.



STANDARD DEPARTURE CHART -INSTRUMENT

RJAA / NARITA INTL

TRANSITION

SHIZUOKA TRANSITION

From over TETRA, via HME R070 to HME VOR/DME, via HME R247/SZE R066 to SZE VOR/DME.

Cross HME VOR/DME at or above FL200.

