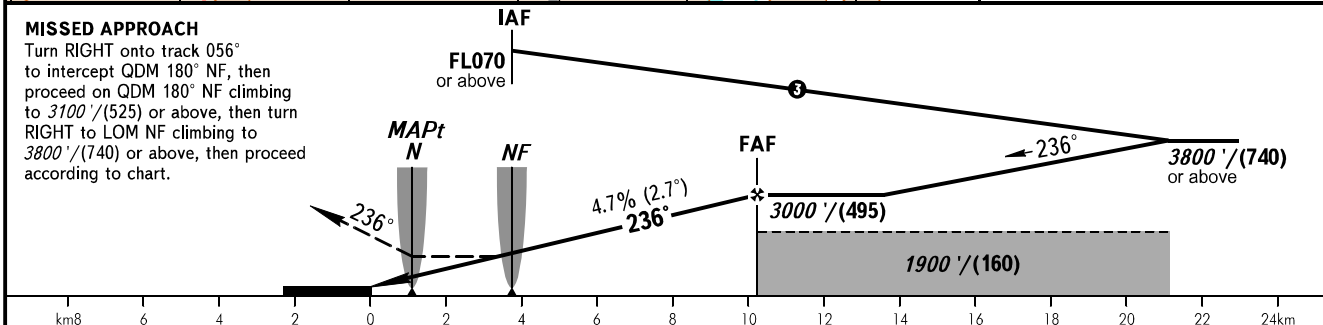
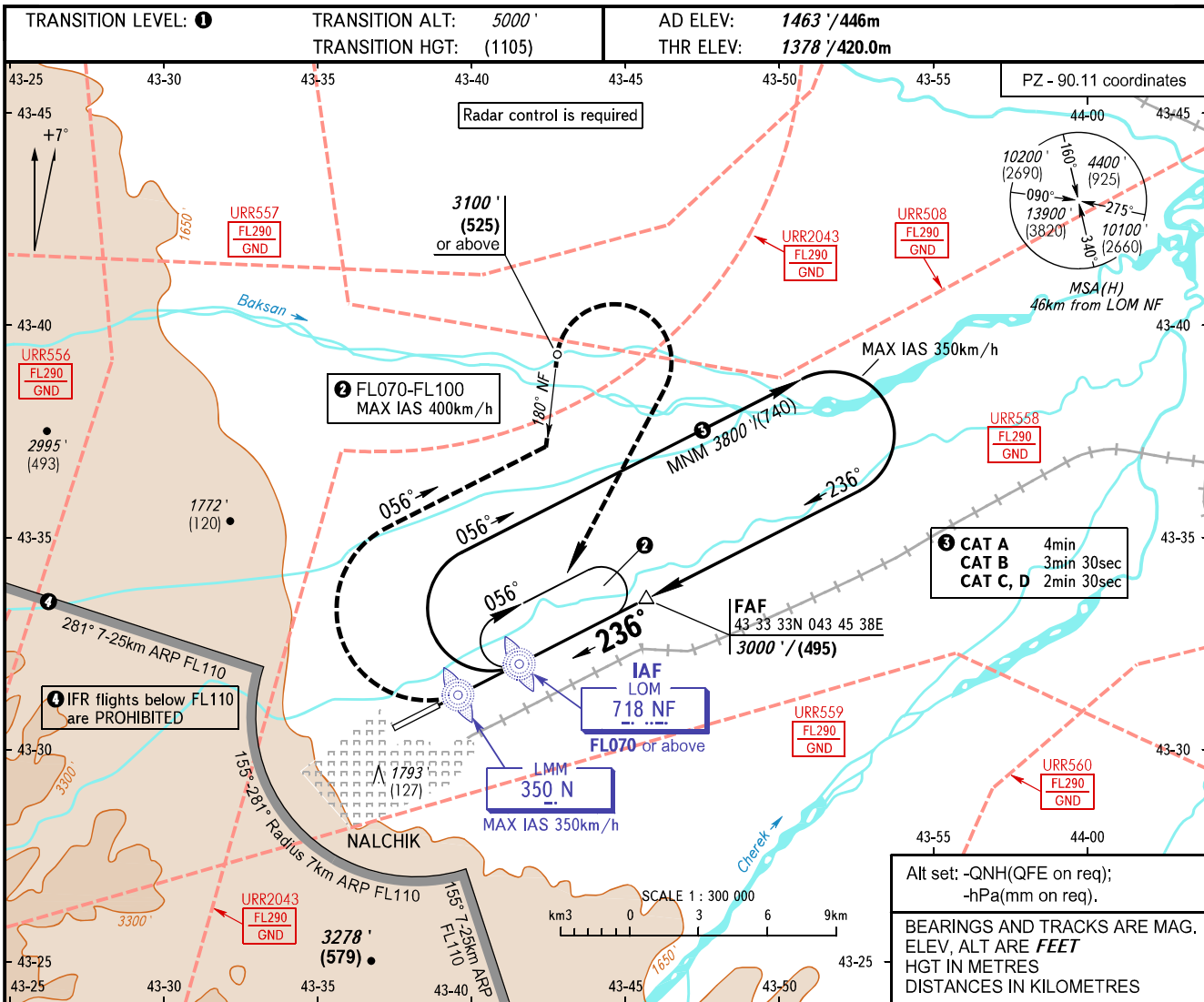


**INSTRUMENT
APPROACH
CHART - ICAO**

**NALCHIK, RUSSIA
NALCHIK
NDB X RWY 24**

START **118.300**



OCA(H)		A	B	C	D	1 TRANSITION LEVEL: - FL070 when QNH is 977 hPa (733mm mercury column) or above; - FL080 when QNH is below 977 hPa (733mm mercury column). WARNING: 1. MAPt at LMM N. Timing for defining MAPt is not authorized. 2. Turn before passing MAPt is PROHIBITED. 3. When URR508, URR556, URR557, URR558, URR559, URR560, URR2043 are active, the chart is not AVBL.				
Straight-in Approach	Circling	1960' (520') (180)	1960' (520') (180)	2020' (640') (195)	2030' (660') (200)					
		2390' (930') (285)	2610' (1150') (351)	3570' (2100') (640)	4160' (2690') (820)					
GROUND SPEED	km/h	150	180	210	240	270	300	330	360	390
RATE OF DESCENT	m/s	2.0	2.4	2.7	3.1	3.5	3.9	4.3	4.7	5.0
	ft/min	385	463	540	617	694	771	848	925	1002