

LOC I-HQA 110.9	APP CRS 308°	Rwy Idg 8129
		TDZE 308
		Apt Elev 310

ILS or LOC RWY 31

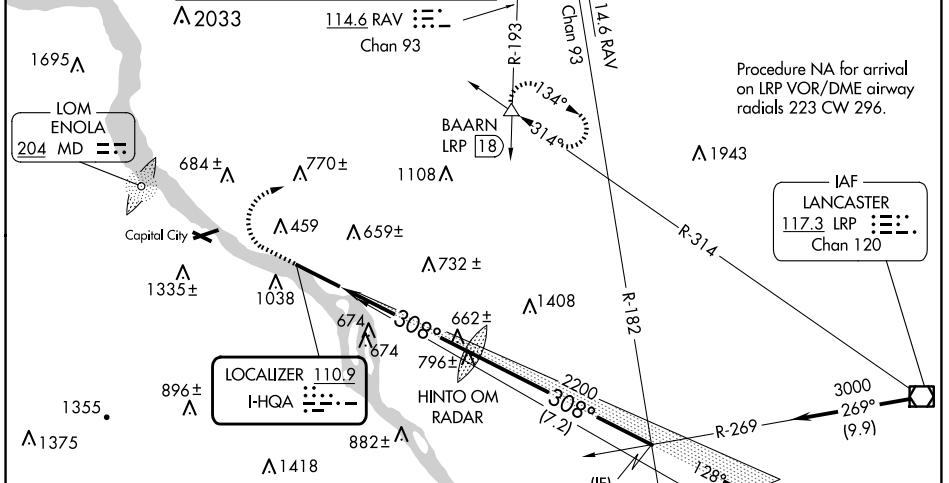
HARRISBURG INTL (MDT)

⚠ Circling NA south of Rwy 13-31.

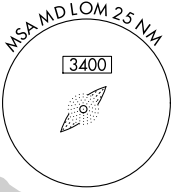
⚠ -17°C

MISSED APPROACH: Climb to 800 then climbing right turn to 3000 on heading 090° and RAV VORTAC R-193 to BAARN INT/LRP 18 DME and hold.

ATIS 118.8	HARRISBURG APP CON (080°-179°) 126.45 281.525 (180°-329°) 124.1 273.525 (330°-079°) 118.25 269.45	HARRISBURG INTL TOWER 124.8 269.35	GND CON 121.7 348.6
----------------------	---	--	-------------------------------



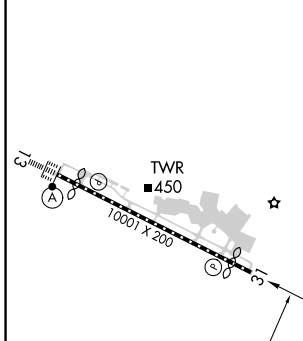
Procedure NA for arrival on LRP VOR/DME airway radials 223 CW 296.



ALTERNATE MISSED APCH FIX

ENOLA 204 MD

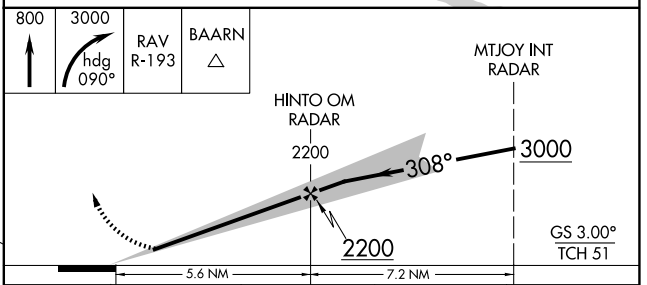
ELEV 310	D	TDZE 308
----------	----------	----------



TDZ/CL Rwy 13
REIL Rwy 31
HIRL Rwy 13-31

FAF to MAP 5.6 NM

Knots	60	90	120	150	180
Min:Sec	5:36	3:44	2:48	2:14	1:52



CATEGORY	A	B	C	D
S-ILS 31	558/50		250 (300-1)	
S-LOC 31	920/50	612 (700-1)	920-1 3/4 612 (700-1 3/4)	920-2 612 (700-2)
CIRCLING	920-1 610 (700-1)	980-1 670 (700-1)	1000-2 690 (700-2)	1440-3 1130 (1200-3)

NE-4, 20 MAR 2025 to 17 APR 2025

NE-4, 20 MAR 2025 to 17 APR 2025