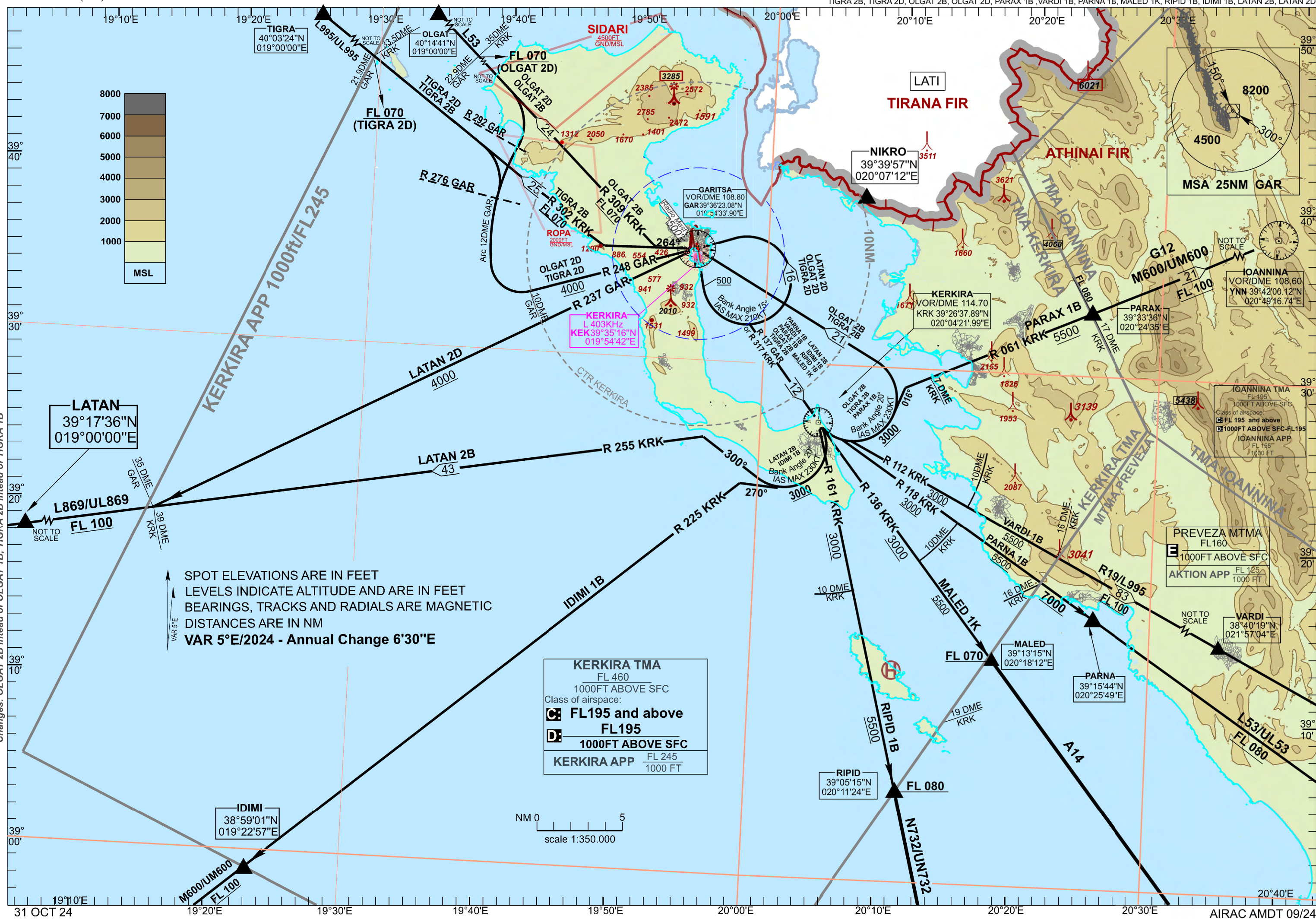


KERKIRA/IOANNIS KAPODISTRIAS  
GAR VOR/DME - KRK VOR/DME - KEK L RWY 16  
MALED 4K RIDID 1R IDIM1 1R LATAN 2R LATAN 2R





**KERKIRA / IOANNIS KAPODISTRIAS AIRPORT**

**SIDs RWY 16**

**KRK VOR/DME, GAR VOR/DME, KEK L.**

**TIGRA 2B, TIGRA 2D, OLGAT 2B, OLGAT 2D, PARAX 1B, VARDI 1B, PARNA 1B, MALED 1K, RIPID 1B, IDIMI 1B, LATAN 2B, LATAN 2D.**

**GENERAL**

- a) A visual climb up to 500ft is required due to obstructions within 1km from the end of RWY 16.
- b) When the perpendicular to RWY 16 component of EAST winds exceeds 30 KT, a visual climb up to 1800ft is required.
- c) When an altitude higher than the transition altitude is designated, then an equivalent flight level shall be specified by ATC unit.

**TIGRA 2B**

Climb straight ahead. At or above 500ft turn left (MAX IAS 210 KT, Bank Angle 15<sup>0</sup>), intercept and follow R 137 GAR (or R 317 KRK) and proceed to KRK VOR. At KRK VOR turn left (MAX IAS 230KT, Bank Angle 20<sup>0</sup>) and proceed to GAR VOR (or to KEK L). After GAR VOR (or KEK L) follow track 264<sup>0</sup> intercept and follow R 302 KRK, join AWY L995 and proceed to TIGRA. Arrange to reach 3000ft or above by KRK VOR and FL 070 or above by GAR VOR (or KEK L). See NOTE

**TIGRA 2D**

Climb straight ahead. At or above 500ft turn left (MAX IAS 210 KT, Bank Angle 15<sup>0</sup>) and proceed to GAR VOR. After GAR VOR intercept and follow R 248 GAR. At R 248 GAR / 10 DME turn right intercept and follow 12 DME Arc GAR. Crossing R 276 GAR turn left, intercept and follow R 302 KRK join AWY L995 and proceed to TIGRA. Arrange to reach 4000ft or above by GAR VOR and FL 070 or above by R 302 KRK 33.5 DME. See NOTE

**OLGAT 2B**

Climb straight ahead. At or above 500ft turn left (MAX IAS 210 KT, Bank Angle 15<sup>0</sup>), intercept and follow R 137 GAR (or R 317 KRK) and proceed to KRK VOR. At KRK VOR turn left (MAX IAS 230KT, Bank Angle 20<sup>0</sup>) and proceed to GAR VOR (or KEK L). At GAR VOR (or KEK L) turn left to track 264<sup>0</sup>, intercept and follow R 309 KRK, join AWY L53 and proceed to OLGAT. Arrange to reach 3000ft or above by KRK VOR and FL 070 or above by GAR VOR (or KEK L). See NOTE

**OLGAT 2D**

Climb straight ahead. At or above 500ft turn left (MAX IAS 210 KT, Bank Angle 15<sup>0</sup>) and proceed to GAR VOR. After GAR VOR intercept and follow R 248 GAR. At R 248 GAR 10 DME turn right intercept and follow 12 DME Arc GAR. Crossing R 292 GAR turn left intercept and follow R 309 KRK, join AWY L53 and proceed to OLGAT. Arrange to reach 4000ft or above by GAR VOR and FL 070 or above by R 309 KRK 35 DME. See NOTE

**PARAX 1B**

Climb straight ahead. At or above 500ft turn left (MAX IAS 210 KT, Bank Angle 15<sup>0</sup>), intercept and follow R 137 GAR (or R 317 KRK) and proceed to KRK VOR. Turn left (MAX IAS 230 KT, Bank Angle 20<sup>0</sup>) to track 016<sup>0</sup>, intercept and follow R 061 KRK, join AWY G12/ M600 and proceed to PARAX. Arrange to reach 3000ft or above by KRK VOR, 5500ft or above by R 061 KRK 7 DME and FL 080 or above by R 061 KRK 17 DME. See NOTE

**VARDI 1B**

Climb straight ahead. At or above 500ft turn left (MAX IAS 210 KT, Bank Angle 15<sup>0</sup>), intercept and follow R 137 GAR (or R 317 KRK) and proceed to KRK VOR. Turn left, intercept and follow R 112 KRK, join AWY R19 / L995 and proceed to VARDI. Arrange to reach 3000ft or above by KRK VOR, 5500ft or above by R 112 KRK 10 DME and FL100 or above by R 112 KRK 16 DME. See NOTE

**PARNA 1B**

Climb straight ahead. At or above 500ft turn left (MAX IAS 210 KT, Bank Angle 15<sup>0</sup>), intercept and follow R 137 GAR (or R 317 KRK) and proceed to KRK VOR. Turn left, intercept and follow R 118 KRK, join AWY L53 and proceed to PARNA. Arrange to reach 3000ft or above by KRK VOR, 5500ft or above by R 118 KRK 10 DME and 7000ft or above by R 118 KRK 16 DME Fix. See NOTE

**MALED 1K**

Climb straight ahead. At or above 500ft turn left (MAX IAS 210 KT, Bank Angle 15<sup>0</sup>), intercept and follow R 137 GAR (or R 317 KRK) and proceed to KRK VOR. Intercept and follow R 136 KRK, join AWY A14 and proceed to MALED. Arrange to reach 3000ft or above by KRK VOR, 5500ft or above by R 136 KRK 10 DME and FL 070 or above by MALED. See NOTE

**RIPID 1B**

Climb straight ahead. At or above 500ft turn left (MAX IAS 210 KT, Bank Angle 15<sup>0</sup>), intercept and follow R 137 GAR (or R 317 KRK) and proceed to KRK VOR. Turn right, intercept and follow R 161 KRK, join AWY N732 and proceed to RIPID. Arrange to reach 3000ft or above by KRK VOR, 5500ft or above by R 161 KRK 10 DME and FL 080 or above by RIPID. See NOTE

**IDIMI 1B**

Climb straight ahead. At or above 500ft turn left (MAX IAS 210 KT, Bank Angle 15<sup>0</sup>), intercept and follow R 137 GAR (or R 317 KRK) and proceed to KRK VOR. Turn right (MAX IAS 230 KT, Bank Angle 20<sup>0</sup>) to track 270<sup>0</sup>, intercept and follow R 225 KRK, join AWY M600 and proceed to IDIMI. Arrange to reach 3000ft or above by KRK VOR, and FL 100 or above by IDIMI. See NOTE

**LATAN 2B**

Climb straight ahead. At or above 500ft turn left (MAX IAS 210 KT, Bank Angle 15<sup>0</sup>), intercept and follow R 137 GAR (or R 317 KRK) and proceed to KRK VOR. At KRK VOR turn right (MAX IAS 230 KT, Bank Angle 20<sup>0</sup>) to track 300<sup>0</sup>, intercept and follow R 255 KRK, join AWY L869 and proceed to LATAN. Arrange to reach 3000ft or above by KRK VOR and FL100 or above by R 255 KRK 39 DME Fix. See NOTE

**LATAN 2D**

Climb straight ahead. At or above 500ft turn left (MAX IAS 210 KT, Bank Angle 15<sup>0</sup>), proceed to GAR VOR, turn left, intercept and follow R 237 GAR. At R 237 GAR 35 DME turn right, join AWY L869 and proceed to LATAN. Arrange to reach 4000ft or above by GAR VOR and FL100 or above by R 237 GAR 35 DME. See NOTE

**NOTE:**

For SIDs **TIGRA 2B, TIGRA 2D, OLGAT 2B, OLGAT 2D, PARNA 1B, MALED 1K**

a minimum PDG (Procedure Design Gradient) of 6.1% (370 t/nm) up to 1800ft for obstacles and then of 5.0% (304 ft/nm) up to FL 070 is required.

For SIDs **PARAX 1B, RIPID 1B**

a minimum PDG (Procedure Design Gradient) of 6.1% (370 ft/nm) up to 1800ft for obstacles and then of 5.0% (304 ft/nm) up to FL 080 is required.

For SIDs **LATAN 2D, LATAN 2B, VARDI 1B, IDIMI 1B**

a minimum PDG (Procedure Design Gradient) of 6.1% (370 ft/nm) up to 1800ft for obstacles and then of 5.0% (304 ft/nm) up to FL 100 is required.