

LOC/DME I-MNQ <b>110.35</b> Chan 40(Y)	APP CRS <b>142°</b>	Rwy ldg <b>9197</b> TDZE <b>6</b> Apt Elev <b>37</b>
--	------------------------	--

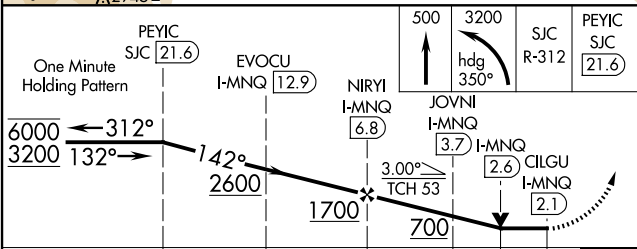
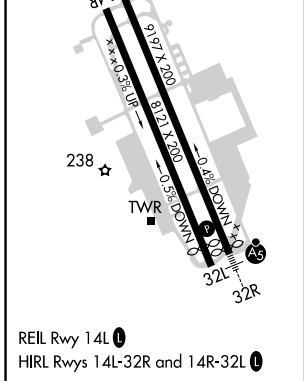
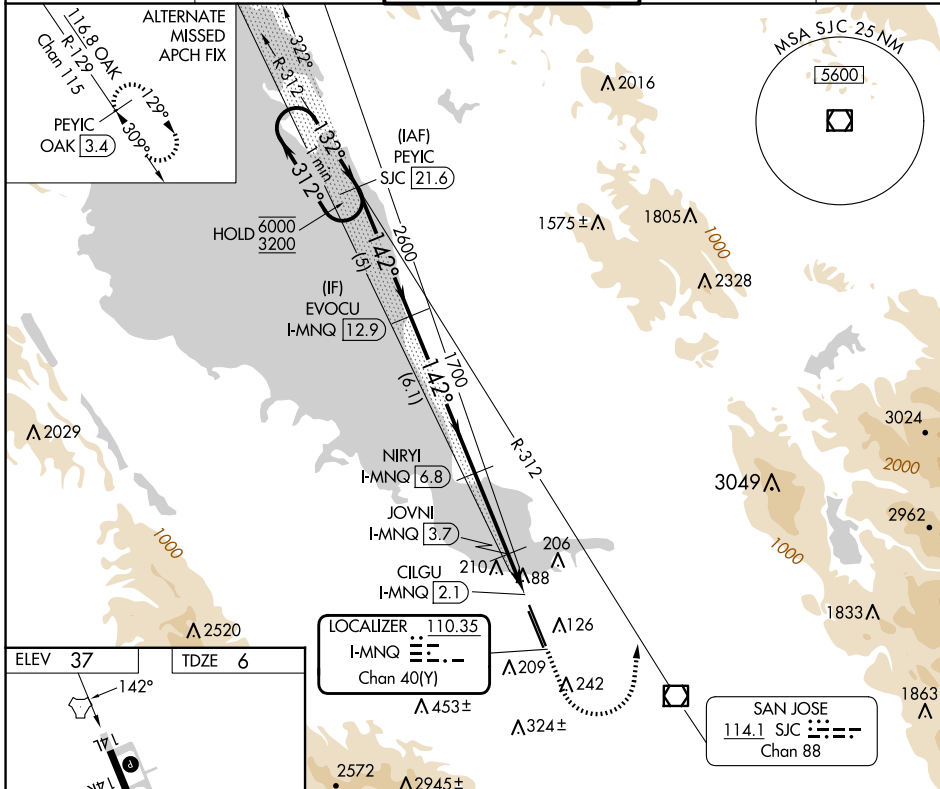
# LOC RWY 14L

MOFFETT FEDERAL AIRFIELD (NUQ)

DME required. RADAR required for procedure entry.

MISSED APPROACH: Climb to 500 then climbing left turn to 3200 on heading 350° and SJC VOR/DME R-312 to PEYIC/SJC 21.6 DME and hold.

ATIS <b>124.175 283.0</b>	NORCAL APP CON <b>120.1 290.25</b>	MOFFETT TOWER ★ <b>119.55</b> (CTAF) <b>259.65</b>	GND CON <b>121.85 278.95</b>	CLNC DEL <b>296.75</b>
------------------------------	---------------------------------------	---	---------------------------------	---------------------------



CATEGORY	A	B	C	D
S-LOC 14L	360-1 354 (400-1)			
CIRCLING	540-1 503 (600-1)	600-1 563 (600-1)	620-1½ 583 (600-1½)	780-2½ 743 (800-2½)

SW-2, 20 MAR 2025 to 17 APR 2025

SW-2, 20 MAR 2025 to 17 APR 2025