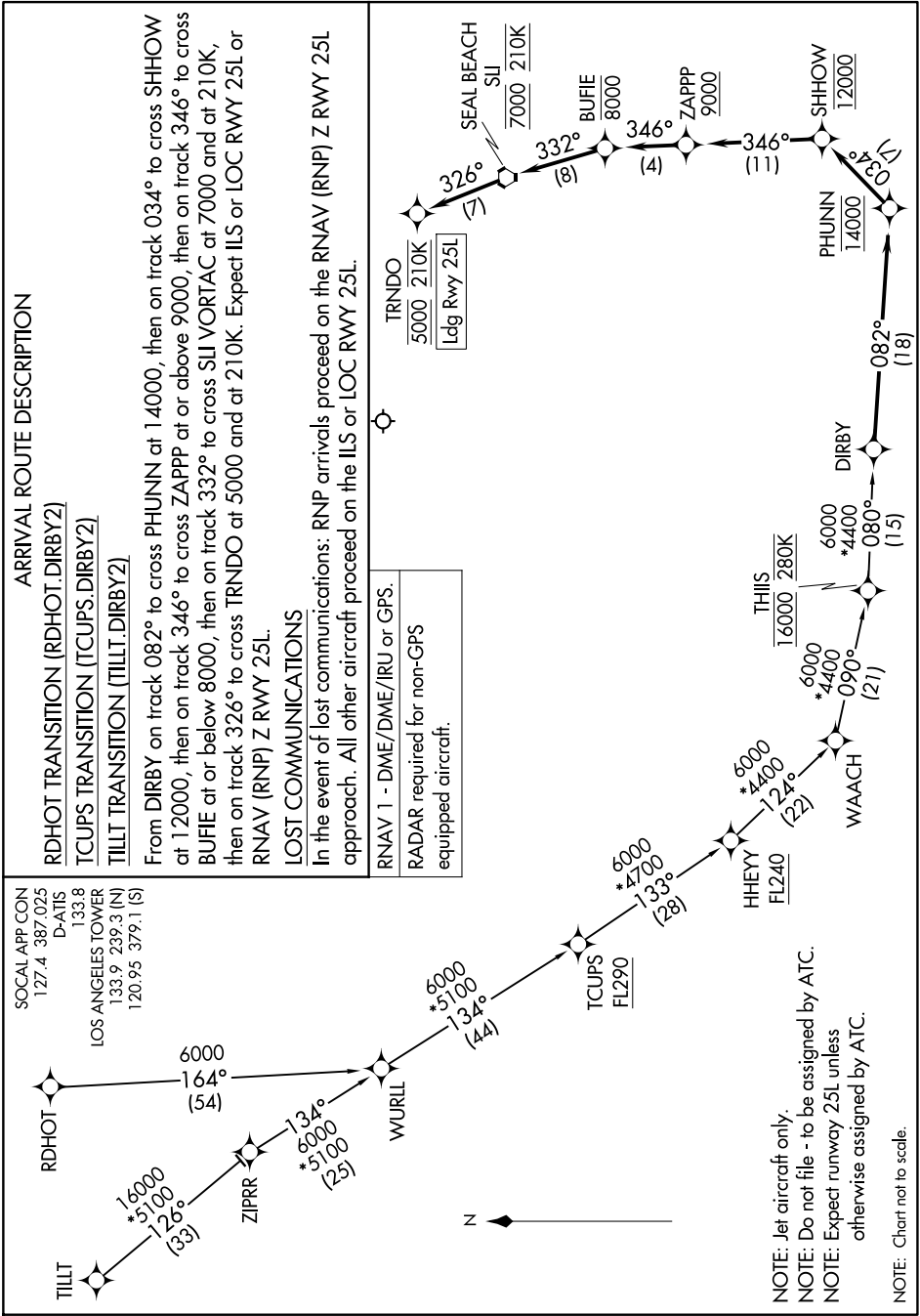


# DIRBY TWO ARRIVAL (RNAV)

AL-237 (FAA)

LOS ANGELES INTL (LAX)  
LOS ANGELES, CALIFORNIA

SW-3, 20 MAR 2025 to 17 APR 2025



SW-3, 20 MAR 2025 to 17 APR 2025

# DIRBY TWO ARRIVAL (RNAV)

LOS ANGELES, CALIFORNIA  
LOS ANGELES INTL (LAX)

NOTE: Jet aircraft only.  
 NOTE: Do not file - to be assigned by ATC.  
 NOTE: Expect runway 25L unless otherwise assigned by ATC.  
 NOTE: Chart not to scale.