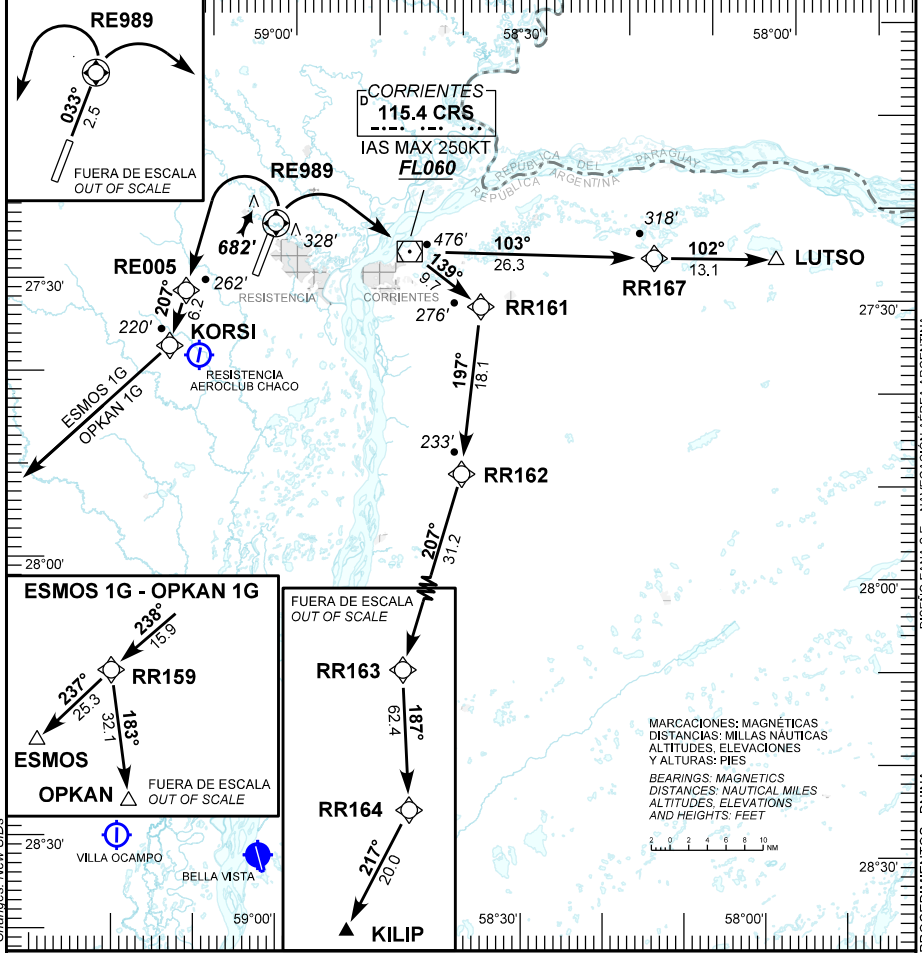
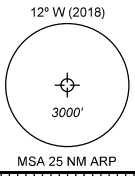


RESISTENCIA (SARE)
RESISTENCIA

SID RNP RWY 03
ESMOS 1G - KILIP 1G - LUTSO 1G - OPKAN 1G

Requiere Certificación Certification required					AD ELEV	173'
RNP 1 / RNAV 1 GNSS					TRANS ALT	3000'
ATIS	RESISTENCIA GND	RESISTENCIA TWR	RESISTENCIA APP	RESISTENCIA CTL	EMERG	
127.85	121.95	118.70 118.10	118.70 118.10	119.40 120.40	121.50	
NOTA: NIL			NOTE: NIL			



SID RWY 03:
KILIP 1G - LUTSO 1G: Pendiente mínima de ascenso 5.1% (292 ft/NM) hasta VOR CRS.

SID RWY 03:
KILIP 1G - LUTSO 1G: Minimum climb gradient 5.1% (292 ft/NM) to CRS VOR.

18 JULIO 2019

RESISTENCIA (SARE) SID RNP RWY 03
ESMOS 1G - KILIP 1G - LUTSO 1G - OPKAN 1G

FIX IDENT	COORDINATES
CRS	27°26'14.25" S 058°45'42.43" W
RE989	27°23'32.87" S 059°01'53.41" W
RE005	27°30'59.81" S 059°12'35.23" W
KORSI	27°36'57.81" S 059°14'25.99" W
RR159	27°47'55.00" S 059°27'29.90" W
ESMOS	28°05'41.00" S 059°47'57.00" W
RR161	27°31'59.78" S 058°38'58.00" W
RR162	27°50'03.14" S 058°38'45.55" W
RR163	28°20'14.08" S 058°47'59.98" W
RR164	29°22'40.36" S 058°43'02.58" W
KILIP	29°40'42.00" S 058°53'06.00" W
RR167	27°26'15.65" S 058°16'12.00" W
LUTSO	27°26'02.00" S 058°01'28.00" W
OPKAN	28°19'47.00" S 059°22'04.00" W

18 JULIO 2019

**1/3 RESISTENCIA (SARE) SID RNP RWY 03
ESMOS 1G - KILIP 1G - LUTSO 1G - OPKAN 1G**

Seq Num	Fix Ident	Path Terminator	Fly Over	Distance (NM)	Course M°(T°)	Turn	Altitude (ft/FL)	Speed Limit (Kt)	Navigation Specification	RNP	Dec (ARP 2018)
010	RE989	CF	Y	2.5	033 (020.9)	N/A	N/A	N/A	RNAV 1 or RNP 1	1.0	12 W
020	RE005	DF	N	N/A	N/A	L	N/A	N/A	RNAV 1 or RNP 1	1.0	12 W
030	KORSI	TF	N	6.2	207 (195.4)	N/A	N/A	N/A	RNAV 1 or RNP 1	1.0	12 W
040	RR159	TF	N	15.9	238 (226.8)	N/A	N/A	N/A	RNAV 1 or RNP 1	1.0	12 W
050	ESMOS	TF	N	25.3	237 (225.7)	N/A	N/A	N/A	RNAV 1 or RNP 1	1.0	12 W
010	RE989	CF	Y	2.5	033 (020.9)	N/A	N/A	-250	RNAV 1 or RNP 1	1.0	12 W
020	CRS	DF	N	N/A	N/A	R	+FL 060	-250	RNAV 1 or RNP 1	1.0	12 W
030	RR161	TF	N	9.7	139 (126.4)	N/A	N/A	N/A	RNAV 1 or RNP 1	1.0	12 W
040	RR162	TF	N	18.1	197 (185.1)	N/A	N/A	N/A	RNAV 1 or RNP 1	1.0	12 W
050	RR163	TF	N	31.2	207 (195.2)	N/A	N/A	N/A	RNAV 1 or RNP 1	1.0	12 W

18 JULIO 2019

**2/3 RESISTENCIA (SARE) SID RNP RWY 03
ESMOS 1G - KILIP 1G - LUTSO 1G - OPKAN 1G**

Seq Num	Fix Ident	Path Terminator	Fly Over	Distance (NM)	Course M°(T°)	Turn	Altitude (ft/FL)	Speed Limit (Kt)	Navigation Specification	RNP	Dec (ARP 2018)
060	RR164	TF	N	62.4	187 (176.0)	N/A	N/A	N/A	RNAV 1 or RNP 1	1.0	12 W
070	KILIP	TF	N	20.0	217 (206.0)	N/A	N/A	N/A	RNAV 1 or RNP 1	1.0	12 W
010	RE989	CF	Y	2.5	033 (020.9)	N/A	N/A	-250	RNAV 1 or RNP 1	1.0	12 W
020	CRS	DF	N	N/A	N/A	R	+FL 060	-250	RNAV 1 or RNP 1	1.0	12 W
030	RR167	TF	N	26.3	103 (089.9)	N/A	N/A	N/A	RNAV 1 or RNP 1	1.0	12 W
040	LUTSO	TF	N	13.1	102 (089.0)	N/A	N/A	N/A	RNAV 1 or RNP 1	1.0	12 W
010	RE989	CF	Y	2.5	033 (020.9)	N/A	N/A	N/A	RNAV 1 or RNP 1	1.0	12 W
020	RE005	DF	N	N/A	N/A	L	N/A	N/A	RNAV 1 or RNP 1	1.0	12 W
030	KORSI	TF	N	6.2	207 (195.4)	N/A	N/A	N/A	RNAV 1 or RNP 1	1.0	12 W
040	RR159	TF	N	15.9	238 (226.8)	N/A	N/A	N/A	RNAV 1 or RNP 1	1.0	12 W

18 JULIO 2019

3/3 RESISTENCIA (SARE) SID RNP RWY 03
ESMOS 1G - KILIP 1G - LUTSO 1G - OPKAN 1G

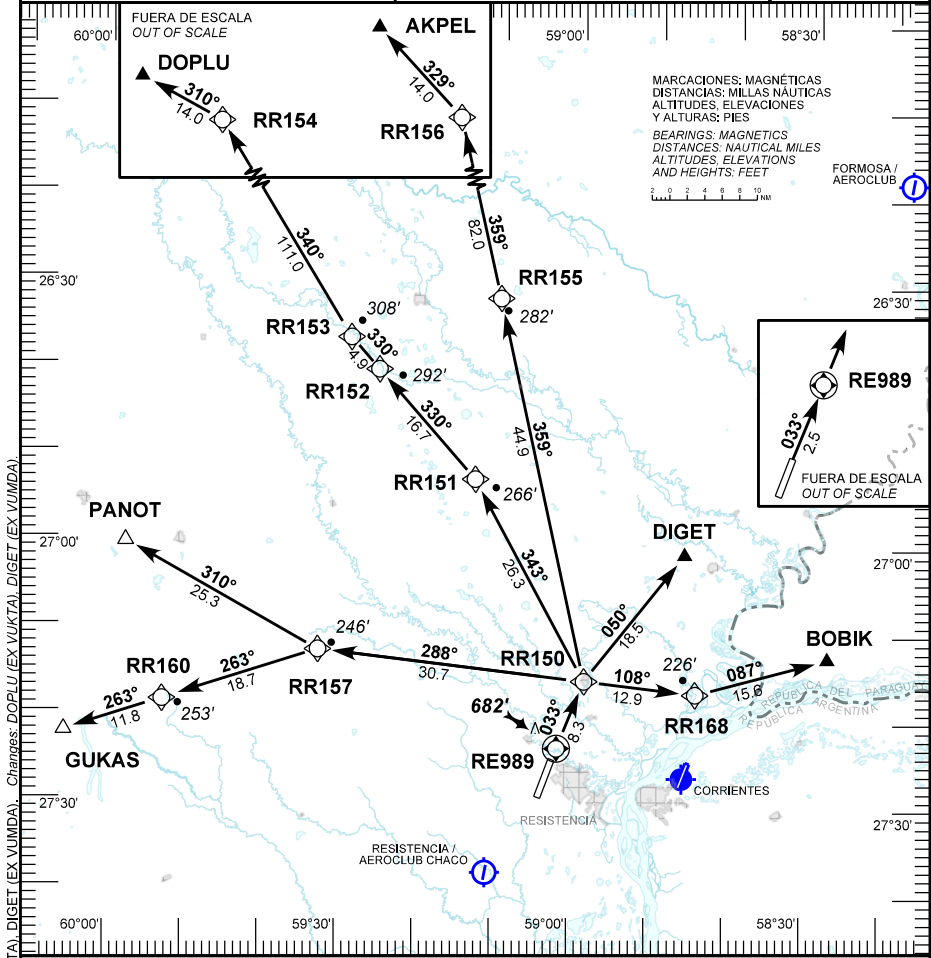
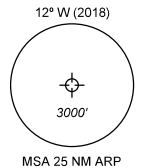
Seq Num	Fix Ident	Path Terminator	Fly Over	Distance (NM)	Course M°(T°)	Turn	Altitude (ft/FL)	Speed Limit (Kt)	Navigation Specification	RNP	Dec (ARP 2018)
050	OPKAN	TF	N	32.1	183 (171.4)	N/A	N/A	N/A	RNAV 1 or RNP 1	1.0	12 W

18 JULIO 2019

RESISTENCIA (SARE)
RESISTENCIA

SID RNP RWY 03
AKPEL 1G - BOBIK 1G - DIGET 1G - DOPLU 1G - GUKAS 1G - PANOT 1G

Requiere Certificación Certification required					AD ELEV	173'
RNP 1 / RNAV 1 GNSS					TRANS ALT	3000'
ATIS	RESISTENCIA GND	RESISTENCIA TWR	RESISTENCIA APP	RESISTENCIA CTL	EMERG	
127.85	121.95	118.70 118.10	118.70 118.10	119.40 120.40	121.50	
NOTA: NIL.			NOTE: NIL.			



PANS OPS - Cambios: DOPLU (EX VUKTA), DIGET (EX VUMDA), DIGET (EX VUKTA), DIGET (EX VUMDA)

DIRECCIÓN REGULACIÓN NORMAS Y PROCEDIMIENTOS - DNINA

SID: NIL.
SID: NIL.

5 DICIEMBRE 2019

RESISTENCIA (SARE) SID RNP RWY 03**AKPEL 1G - BOBIK 1G - DIGET 1G – DOPLU 1G - GUKAS 1G - PANOT 1G**

FIX IDENT	COORDINATES
RE989	27°23'32.87" S 059°01'53.41" W
RR150	27°15'46.93" S 058°58'34.48" W
RR157	27°12'36.50" S 059°32'50.91" W
RR160	27°18'31.44" S 059°52'47.24" W
GUKAS	27°22'13.00" S 060°05'20.00" W
RR151	26°52'48.14" S 059°13'01.53" W
RR152	26°40'21.15" S 059°25'32.30" W
RR153	26°36'42.77" S 059°29'11.05" W
RR154	25°02'00.19" S 060°33'48.24" W
DOPLU	24°55'17.00" S 060°47'20.00" W
DIGET	27°01'06.00" S 058°45'58.00" W
RR168	27°17'04.18" S 058°44'12.76" W
BOBIK	27°12'44.00" S 058°27'22.00" W
RR155	26°31'59.38" S 059°10'10.19" W
RR156	25°12'03.45" S 059°31'22.39" W
AKPEL	25°01'51.00" S 059°41'58.00" W
PANOT	27°00'25.00" S 059°57'41.00" W

5 DICIEMBRE 2019

1/3 RESISTENCIA (SARE) SID RNP RWY 03**AKPEL 1G - BOBIK 1G - DIGET 1G – DOPLU 1G - GUKAS 1G - PANOT 1G**

Seq Num	Fix Ident	Path Terminator	Fly Over	Distance (NM)	Course M°(T°)	Turn	Altitude (ft/FL)	Speed Limit (Kt)	Navigation Specification	RNP	Dec (ARP 2018)
010	RE989	CF	Y	2.5	033 (020.9)	N/A	N/A	N/A	RNAV 1 or RNP 1	1.0	12 W
020	RR150	TF	N	8.3	033 (020.9)	N/A	N/A	N/A	RNAV 1 or RNP 1	1.0	12 W
030	RR157	TF	N	30.7	288 (276.0)	N/A	N/A	N/A	RNAV 1 or RNP 1	1.0	12 W
040	RR160	TF	N	18.7	263 (251.7)	N/A	N/A	N/A	RNAV 1 or RNP 1	1.0	12 W
050	GUKAS	TF	N	11.8	263 (251.8)	N/A	N/A	N/A	RNAV 1 or RNP 1	1.0	12 W
010	RE989	CF	Y	2.5	033 (020.9)	N/A	N/A	N/A	RNAV 1 or RNP 1	1.0	12 W
020	RR150	TF	N	8.3	033 (020.9)	N/A	N/A	N/A	RNAV 1 or RNP 1	1.0	12 W
030	RR151	TF	N	26.3	343 (330.7)	N/A	N/A	N/A	RNAV 1 or RNP 1	1.0	12 W
040	RR152	TF	N	16.7	330 (318.0)	N/A	N/A	N/A	RNAV 1 or RNP 1	1.0	12 W
050	RR153	TF	N	4.9	330 (318.0)	N/A	N/A	N/A	RNAV 1 or RNP 1	1.0	12 W

5 DICIEMBRE 2019

2/3 RESISTENCIA (SARE) SID RNP RWY 03**AKPEL 1G - BOBIK 1G - DIGET 1G – DOPLU 1G - GUKAS 1G - PANOT 1G**

Seq Num	Fix Ident	Path Terminator	Fly Over	Distance (NM)	Course M°(T°)	Turn	Altitude (ft/FL)	Speed Limit (Kt)	Navigation Specification	RNP	Dec (ARP 2018)
060	RR154	TF	N	111.0	340 (328.5)	N/A	N/A	N/A	RNAV 1 or RNP 1	1.0	12 W
070	DOPLU	TF	N	14.0	310 (298.6)	N/A	N/A	N/A	RNAV 1 or RNP 1	1.0	12 W
010	RE989	CF	Y	2.5	033 (020.9)	N/A	N/A	N/A	RNAV 1 or RNP 1	1.0	12 W
020	RR150	TF	N	8.3	033 (020.9)	N/A	N/A	N/A	RNAV 1 or RNP 1	1.0	12 W
030	DIGET	TF	N	18.5	050 (037.5)	N/A	N/A	N/A	RNAV 1 or RNP 1	1.0	12 W
010	RE989	CF	Y	2.5	033 (020.9)	N/A	N/A	N/A	RNAV 1 or RNP 1	1.0	12 W
020	RR150	TF	N	8.3	033 (020.9)	N/A	N/A	N/A	RNAV 1 or RNP 1	1.0	12 W
030	RR168	TF	N	12.9	108 (095.7)	N/A	N/A	N/A	RNAV 1 or RNP 1	1.0	12 W
040	BOBIK	TF	N	15.6	087 (073.9)	N/A	N/A	N/A	RNAV 1 or RNP 1	1.0	12 W
010	RE989	CF	Y	2.5	033 (020.9)	N/A	N/A	N/A	RNAV 1 or RNP 1	1.0	12 W

5 DICIEMBRE 2019

3/3 RESISTENCIA (SARE) SID RNP RWY 03**AKPEL 1G - BOBIK 1G - DIGET 1G – DOPLU 1G - GUKAS 1G - PANOT 1G**

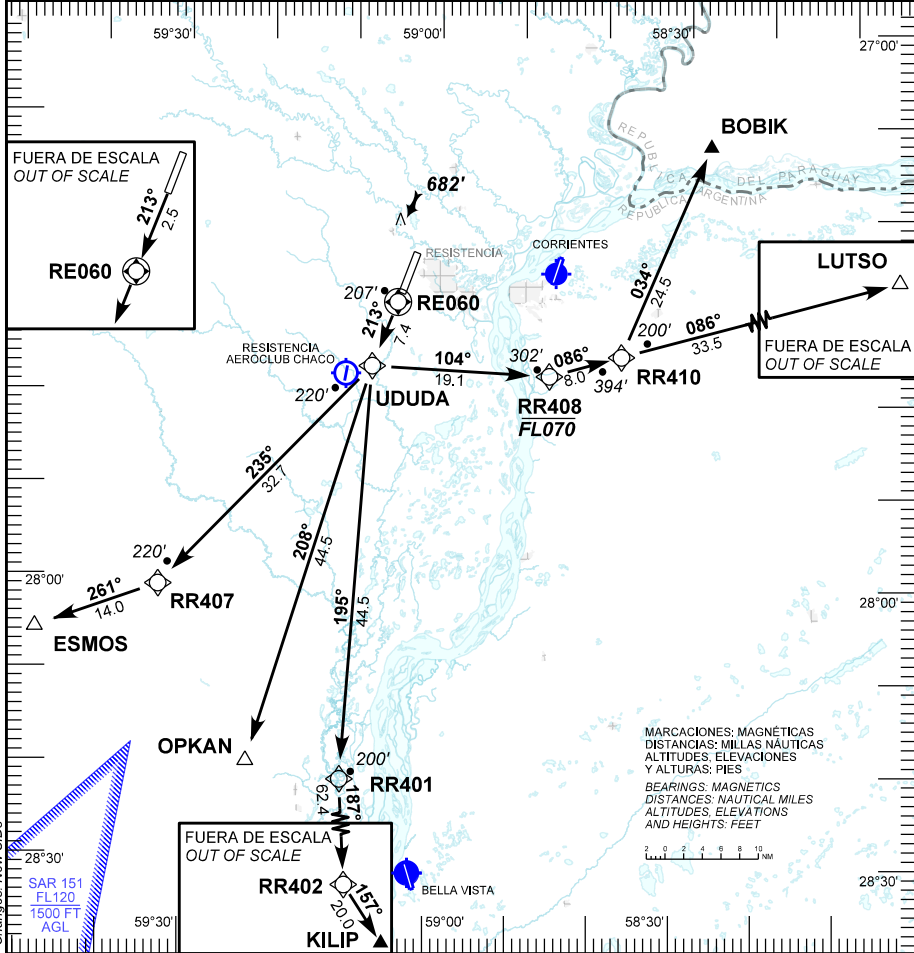
Seq Num	Fix Ident	Path Terminator	Fly Over	Distance (NM)	Course M°(T°)	Turn	Altitude (ft/FL)	Speed Limit (Kt)	Navigation Specification	RNP	Dec (ARP 2018)
020	RR150	TF	N	8.3	033 (020.9)	N/A	N/A	N/A	RNAV 1 or RNP 1	1.0	12 W
030	RR155	TF	N	44.9	359 (346.7)	N/A	N/A	N/A	RNAV 1 or RNP 1	1.0	12 W
040	RR156	TF	N	82.0	359 (346.6)	N/A	N/A	N/A	RNAV 1 or RNP 1	1.0	12 W
050	AKPEL	TF	N	14.0	329 (316.7)	N/A	N/A	N/A	RNAV 1 or RNP 1	1.0	12 W
010	RE989	CF	Y	2.5	033 (020.9)	N/A	N/A	N/A	RNAV 1 or RNP 1	1.0	12 W
020	RR150	TF	N	8.3	033 (020.9)	N/A	N/A	N/A	RNAV 1 or RNP 1	1.0	12 W
030	RR157	TF	N	30.7	288 (276.0)	N/A	N/A	N/A	RNAV 1 or RNP 1	1.0	12 W
040	PANOT	TF	N	25.3	310 (298.8)	N/A	N/A	N/A	RNAV 1 or RNP 1	1.0	12 W

5 DICIEMBRE 2019

RESISTENCIA (SARE)
RESISTENCIA

SID RNP RWY 21
BOBIK 1C - ESMOS 1C - KILIP 1C - LUTSO 1C - OPKAN 1C

Requiere Certificación Certification required					AD ELEV	173'	12° W (2018) 
RNP 1 / RNAV 1 GNSS					TRANS ALT	3000'	
ATIS	RESISTENCIA GND	RESISTENCIA TWR	RESISTENCIA APP	RESISTENCIA CTL	EMERG		
127.85	121.95	118.70 118.10	118.70 118.10	119.40 120.40	121.50		
NOTA: NIL.			NOTE: NIL.				



SID RWY 21:
BOBIK 1C - ESMOS 1C - KILIP 1C - LUTSO 1C - OPKAN 1C: Pendiente mínima de ascenso 4.6% (280 ft/NM) hasta UDUDA.

SID RWY 21:
BOBIK 1C - ESMOS 1C - KILIP 1C - LUTSO 1C - OPKAN 1C: Minimum climb gradient 4.6% (280 ft/NM) to UDUDA.

18 JULIO 2019

RESISTENCIA (SARE) SID RNP RWY 21

BOBIK 1C - ESMOS 1C - KILIP 1C - LUTSO 1C - OPKAN 1C

FIX IDENT	COORDINATES
RE060	27°30'08.96" S 059°04'42.86" W
UDUDA	27°37'03.83" S 059°07'40.78" W
RR401	28°21'35.64" S 059°10'36.90" W
RR402	29°24'03.93" S 059°05'52.93" W
KILIP	29°40'42.00" S 058°53'06.00" W
RR408	27°37'48.70" S 058°46'14.93" W
RR410	27°35'33.62" S 058°37'36.31" W
LUTSO	27°26'02.00" S 058°01'28.00" W
OPKAN	28°19'47.00" S 059°22'04.00" W
BOBIK	27°12'44.00" S 058°27'22.00" W
RR407	28°00'53.64" S 059°33'04.53" W
ESMOS	28°05'41.00" S 059°47'57.00" W

18 JULIO 2019

1/3 RESISTENCIA (SARE) SID RNP RWY 21
BOBIK 1C - ESMOS 1C - KILIP 1C - LUTSO 1C - OPKAN 1 C

Seq Num	Fix Ident	Path Terminator	Fly Over	Distance (NM)	Course M°(T°)	Turn	Altitude (ft/FL)	Speed Limit (Kt)	Navigation Specification	RNP	Dec (ARP 2018)
010	RE060	CF	Y	2.5	213 (200.9)	N/A	N/A	N/A	RNAV 1 or RNP 1	1.0	12 W
020	UDUDA	TF	N	7.4	213 (200.9)	N/A	N/A	N/A	RNAV 1 or RNP 1	1.0	12 W
030	RR408	TF	N	19.1	104 (092.2)	N/A	-FL 070	N/A	RNAV 1 or RNP 1	1.0	12 W
040	RR410	TF	N	8.0	086 (073.7)	N/A	N/A	N/A	RNAV 1 or RNP 1	1.0	12 W
050	BOBIK	TF	N	24.5	034 (021.8)	N/A	N/A	N/A	RNAV 1 or RNP 1	1.0	12 W
010	RE060	CF	Y	2.5	213 (200.9)	N/A	N/A	N/A	RNAV 1 or RNP 1	1.0	12 W
020	UDUDA	TF	N	7.4	213 (200.9)	N/A	N/A	N/A	RNAV 1 or RNP 1	1.0	12 W
030	RR407	TF	N	32.7	235 (223.6)	N/A	N/A	N/A	RNAV 1 or RNP 1	1.0	12 W
040	ESMOS	TF	N	14.0	261 (250.1)	N/A	N/A	N/A	RNAV 1 or RNP 1	1.0	12 W
010	RE060	CF	Y	2.5	213 (200.9)	N/A	N/A	N/A	RNAV 1 or RNP 1	1.0	12 W

18 JULIO 2019

2/3 RESISTENCIA (SARE) SID RNP RWY 21
BOBIK 1C - ESMOS 1C - KILIP 1C - LUTSO 1C - OPKAN 1C

Seq Num	Fix Ident	Path Terminator	Fly Over	Distance (NM)	Course M°(T°)	Turn	Altitude (ft/FL)	Speed Limit (Kt)	Navigation Specification	RNP	Dec (ARP 2018)
020	UDUDA	TF	N	7.4	213 (200.9)	N/A	N/A	N/A	RNAV 1 or RNP 1	1.0	12 W
030	RR408	TF	N	19.1	104 (092.2)	N/A	-FL 070	N/A	RNAV 1 or RNP 1	1.0	12 W
040	RR410	TF	N	8.0	086 (073.7)	N/A	N/A	N/A	RNAV 1 or RNP 1	1.0	12 W
050	LUTSO	TF	N	33.5	086 (073.4)	N/A	N/A	N/A	RNAV 1 or RNP 1	1.0	12 W
010	RE060	CF	Y	2.5	213 (200.9)	N/A	N/A	N/A	RNAV 1 or RNP 1	1.0	12 W
020	UDUDA	TF	N	7.4	213 (200.9)	N/A	N/A	N/A	RNAV 1 or RNP 1	1.0	12 W
030	OPKAN	TF	N	44.5	208 (196.7)	N/A	N/A	N/A	RNAV 1 or RNP 1	1.0	12 W
010	RE060	CF	Y	2.5	213 (200.9)	N/A	N/A	N/A	RNAV 1 or RNP 1	1.0	12 W
020	UDUDA	TF	N	7.4	213 (200.9)	N/A	N/A	N/A	RNAV 1 or RNP 1	1.0	12 W
030	RR401	TF	N	44.5	195 (183.4)	N/A	N/A	N/A	RNAV 1 or RNP 1	1.0	12 W

18 JULIO 2019

3/3 RESISTENCIA (SARE) SID RNP RWY 21
BOBIK 1C - ESMOS 1C - KILIP 1C - LUTSO 1C - OPKAN 1C

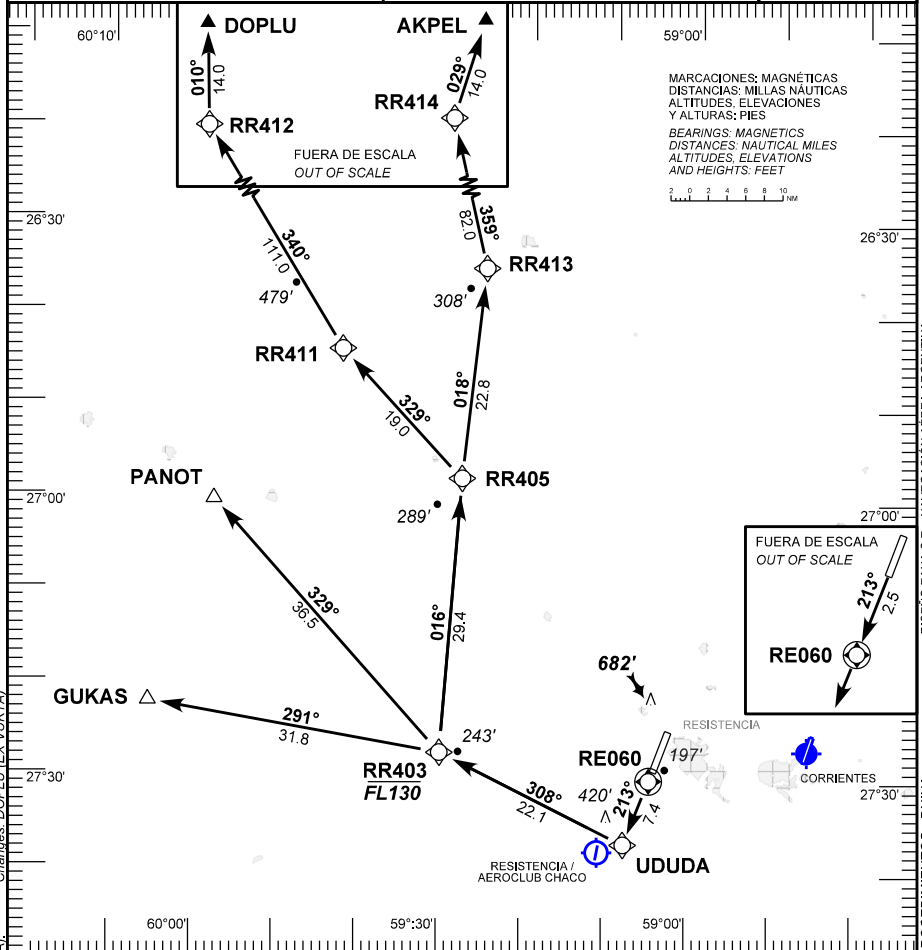
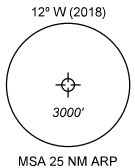
Seq Num	Fix Ident	Path Terminator	Fly Over	Distance (NM)	Course M°(T°)	Turn	Altitude (ft/FL)	Speed Limit (Kt)	Navigation Specification	RNP	Dec (ARP 2018)
040	RR402	TF	N	62.4	187 (176.2)	N/A	N/A	N/A	RNAV 1 or RNP 1	1.0	12 W
050	KILIP	TF	N	20.0	157 (146.0)	N/A	N/A	N/A	RNAV 1 or RNP 1	1.0	12 W

18 JULIO 2019

RESISTENCIA (SARE)
RESISTENCIA

SID RNP RWY 21
AKPEL 1C - DOPLU 1C - GUKAS 1C - PANOT 1C

Requiere Certificación <i>Certification required</i>					AD ELEV	173'
RNP 1 / RNAV 1 GNSS					TRANS ALT	3000'
ATIS	RESISTENCIA GND	RESISTENCIA TWR	RESISTENCIA APP	RESISTENCIA CTL	EMERG	
127.85	121.95	118.70 118.10	118.70 118.10	119.40 120.40	121.50	
NOTA: NIL.			NOTE: NIL.			



SID RWY21:
AKPEL 1C - GUKAS 1C - PANOT 1C - DOPLU 1C: Pendiente mínima de ascenso 4.6% (280 ft/NM) hasta UDUDA.

SID RWY 21:
AKPEL 1C - GUKAS 1C - PANOT 1C - DOPLU 1C: Minimum climb gradient 4.6% (280 ft/NM) to UDUDA.

5 DICIEMBRE 2019

**RESISTENCIA (SARE) SID RNP RWY 21
AKPEL 1C - GUKAS 1C - PANOT 1C - DOPLU 1C**

FIX IDENT	COORDINATES
RE060	27°30'08.96" S 059°04'42.86" W
UDUDA	27°37'03.83" S 059°07'40.78" W
RR403	27°27'26.69" S 059°30'03.23" W
RR405	26°58'00.05" S 059°27'53.02" W
RR413	26°35'16.25" S 059°25'21.05" W
RR414	25°15'18.21" S 059°46'23.65" W
AKPEL	25°01'51.00" S 059°41'58.00" W
GUKAS	27°22'13.00" S 060°05'20.00" W
PANOT	27°00'25.00" S 059°57'41.00" W
RR411	26°44'07.65" S 059°42'27.37" W
RR412	25°09'19.39" S 060°46'57.95" W
DOPLU	24°55'17.00" S 060°47'20.00" W

5 DICIEMBRE 2019

**1/3 RESISTENCIA (SARE) SID RNP RWY 21
AKPEL 1C - DOPLU 1C - GUKAS 1C - PANOT 1C**

Seq Num	Fix Ident	Path Terminator	Fly Over	Distance (NM)	Course M°(T°)	Turn	Altitude (ft/FL)	Speed Limit (Kt)	Navigation Specification	RNP	Dec (ARP 2018)
010	RE060	CF	Y	2.5	213 (200.9)	N/A	N/A	N/A	RNAV 1 or RNP 1	1.0	12 W
020	UDUDA	TF	N	7.4	213 (200.9)	N/A	N/A	N/A	RNAV 1 or RNP 1	1.0	12 W
030	RR403	TF	N	22.1	308 (295.8)	N/A	-FL 130	N/A	RNAV 1 or RNP 1	1.0	12 W
040	RR405	TF	N	29.4	016 (003.8)	N/A	N/A	N/A	RNAV 1 or RNP 1	1.0	12 W
050	RR413	TF	N	22.8	018 (005.7)	N/A	N/A	N/A	RNAV 1 or RNP 1	1.0	12 W
060	RR414	TF	N	82.0	359 (346.7)	N/A	N/A	N/A	RNAV 1 or RNP 1	1.0	12 W
070	AKPEL	TF	N	14.0	029 (016.7)	N/A	N/A	N/A	RNAV 1 or RNP 1	1.0	12 W
010	RE060	CF	Y	2.5	213 (200.9)	N/A	N/A	N/A	RNAV 1 or RNP 1	1.0	12 W
020	UDUDA	TF	N	7.4	213 (200.9)	N/A	N/A	N/A	RNAV 1 or RNP 1	1.0	12 W
030	RR403	TF	N	22.1	308 (295.8)	N/A	-FL 130	N/A	RNAV 1 or RNP 1	1.0	12 W

5 DICIEMBRE 2019

**2/3 RESISTENCIA (SARE) SID RNP RWY 21
AKPEL 1C - DOPLU 1C - GUKAS 1C - PANOT 1C**

Seq Num	Fix Ident	Path Terminator	Fly Over	Distance (NM)	Course M°(T°)	Turn	Altitude (ft/FL)	Speed Limit (Kt)	Navigation Specification	RNP	Dec (ARP 2018)
040	GUKAS	TF	N	31.8	291 (279.6)	N/A	N/A	N/A	RNAV 1 or RNP 1	1.0	12 W
010	RE060	CF	Y	2.5	213 (200.9)	N/A	N/A	N/A	RNAV 1 or RNP 1	1.0	12 W
020	UDUDA	TF	N	7.4	213 (200.9)	N/A	N/A	N/A	RNAV 1 or RNP 1	1.0	12 W
030	RR403	TF	N	22.1	308 (295.8)	N/A	-FL 130	N/A	RNAV 1 or RNP 1	1.0	12 W
040	PANOT	TF	N	36.5	329 (317.7)	N/A	N/A	N/A	RNAV 1 or RNP 1	1.0	12 W
010	RE060	CF	Y	2.5	213 (200.9)	N/A	N/A	N/A	RNAV 1 or RNP 1	1.0	12 W
020	UDUDA	TF	N	7.4	213 (200.9)	N/A	N/A	N/A	RNAV 1 or RNP 1	1.0	12 W
030	RR403	TF	N	22.1	308 (295.8)	N/A	-FL 130	N/A	RNAV 1 or RNP 1	1.0	12 W
040	RR405	TF	N	29.4	016 (003.8)	N/A	N/A	N/A	RNAV 1 or RNP 1	1.0	12 W
050	RR411	TF	N	19.0	329 (316.8)	N/A	N/A	N/A	RNAV 1 or RNP 1	1.0	12 W

5 DICIEMBRE 2019

3/3 RESISTENCIA (SARE) SID RNP RWY 21
AKPEL 1C - DOPLU 1C - GUKAS 1C - PANOT 1C

Seq Num	Fix Ident	Path Terminator	Fly Over	Distance (NM)	Course M°(T°)	Turn	Altitude (ft/FL)	Speed Limit (Kt)	Navigation Specification	RNP	Dec (ARP 2018)
060	RR412	TF	N	111.0	340 (328.6)	N/A	N/A	N/A	RNAV 1 or RNP 1	1.0	12 W
070	DOPLU	TF	N	14.0	010 (358.6)	N/A	N/A	N/A	RNAV 1 or RNP 1	1.0	12 W

5 DICIEMBRE 2019