

ICAO – INSTRUMENT APPROACH CHART

WARNING: Pilots shall pay attention to DECIMOMANNU aerodrome North-West of the field – distance 6 NM.

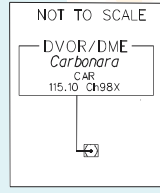
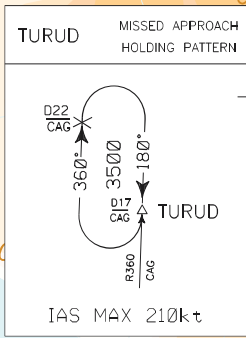
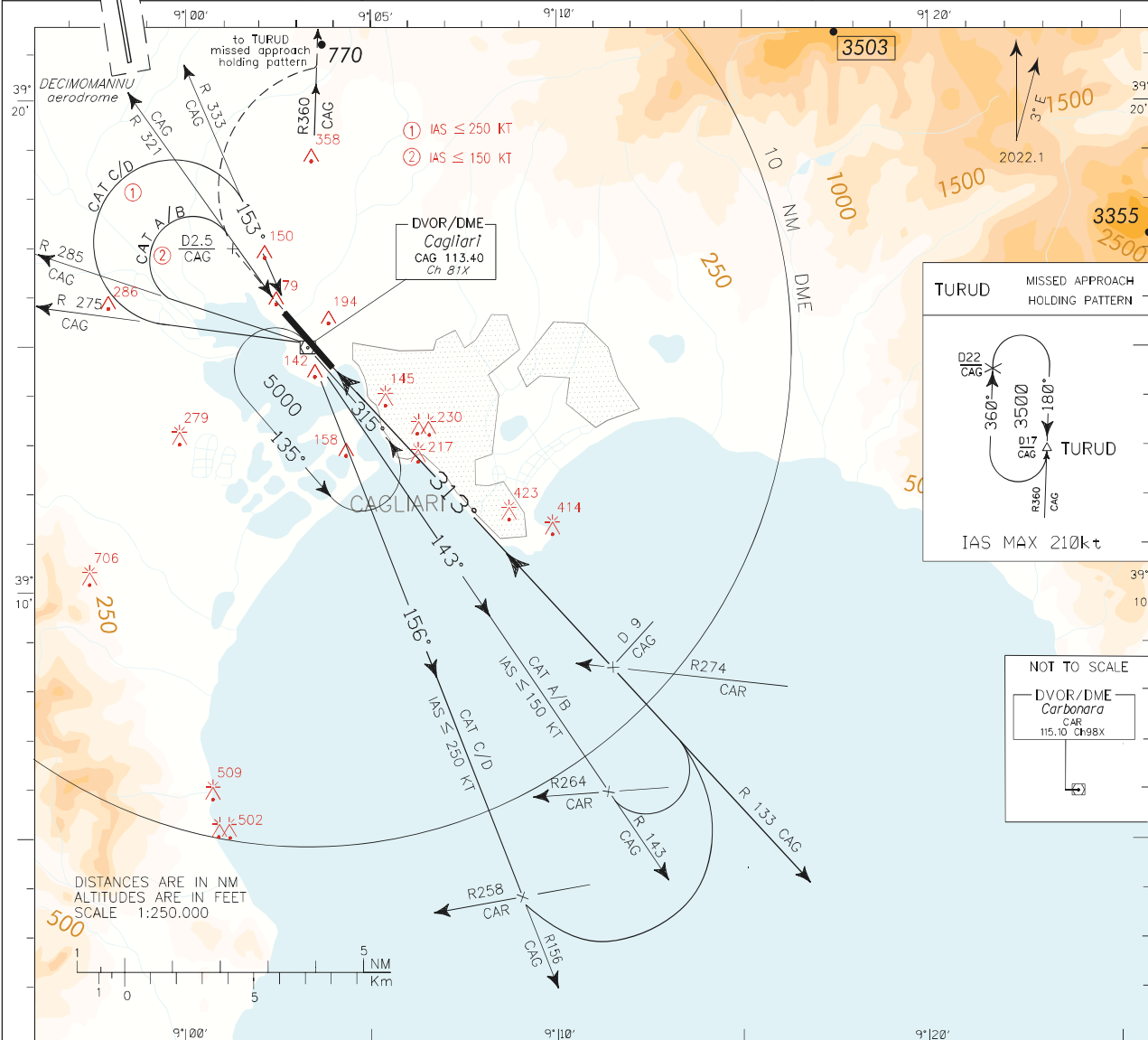
APP Cagliari APP (119.275 / 122.950)
 Cagliari Radar (122.950)
 TWR Elmas TWR (120.605 / 122.100)
 ATIS Cagliari Arrival and departure Info (127.055)

AD ELEV 11

LINE

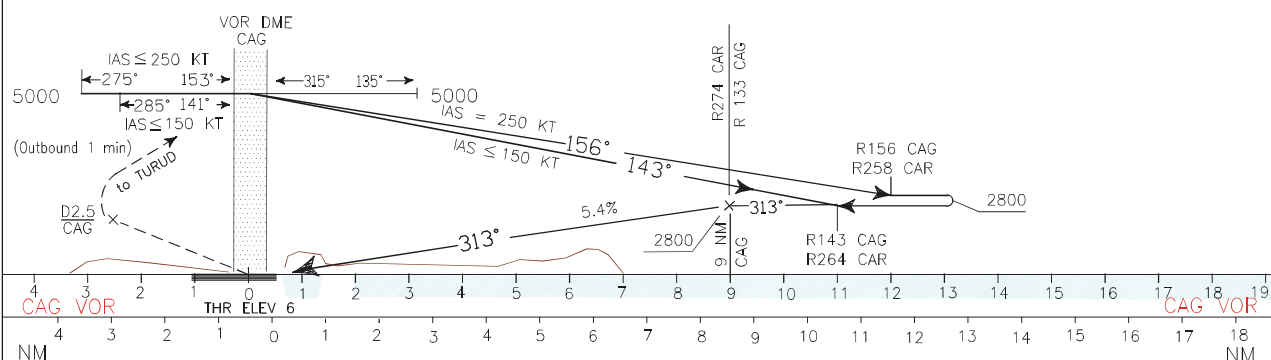
CAGLIARI/ ELMAS
 VOR-Y RWY 32

CHANGE:VOR/DME 'CAG' replaced by DVOR/DME 'CAG'



TRANSITION ALT 6000

MISSED APPROACH: Proceed on final track climbing to 3500ft. Passing 2.5 NM CAG DME turn right to join and follow R360 CAG VOR (TR360°) bound to TURUD holding pattern (HF RDL360/17NM CAG VOR/DME). Hold BTN 17NM and 22NM CAG DME INBD TR 180°, right turns, IAS MAX 210kt.



STRAIGHT IN APPROACH		OCA (OCH)	A	B	C	D	CIRCLING SECTOR 	GS	FT/MIN	FAF-MAPT	MNM CAG	SECT VOR	ALT VOR
VOR		900 (890)							60	330			
CIRCLING		1100 (1090)						90	490	6 : 00			
								120	659	4 : 30			
								150	823	3 : 36			
								180	988	3 : 00			

Edited by AM-CIGA