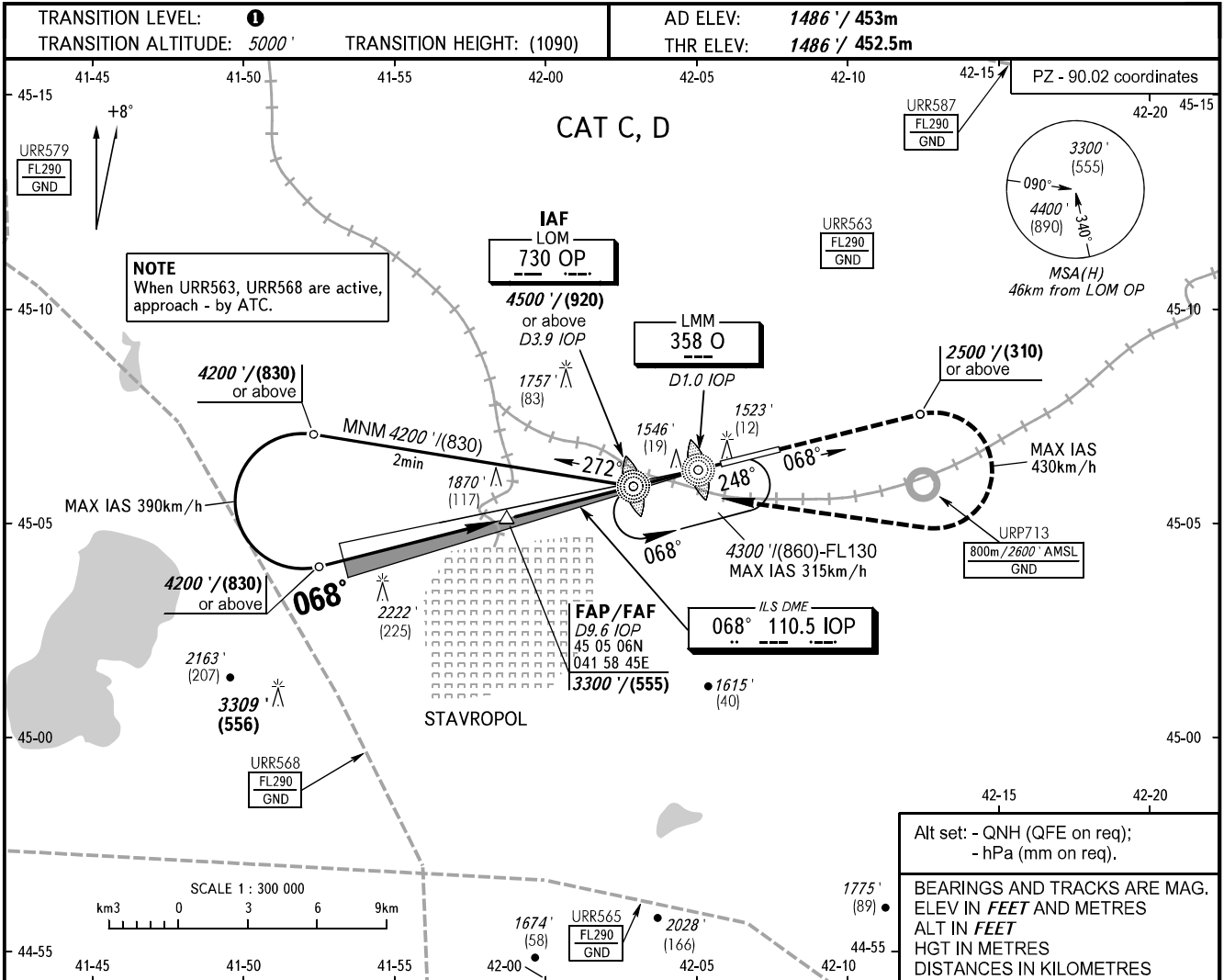


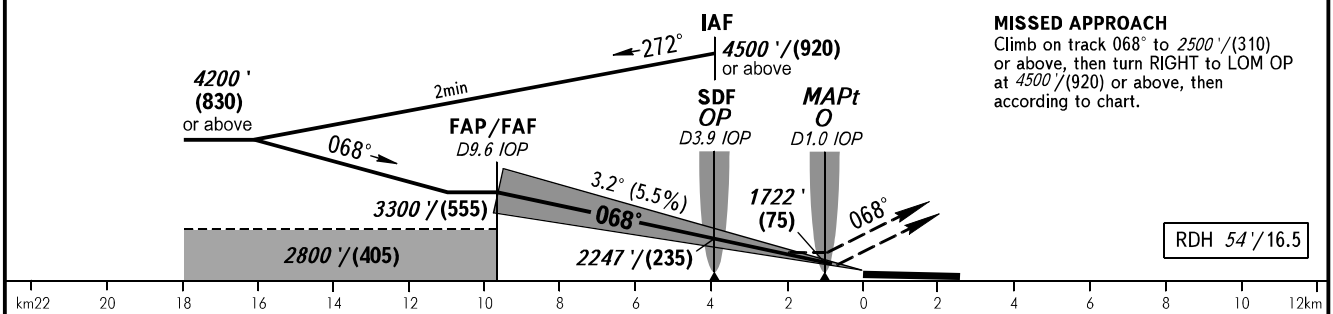
**INSTRUMENT  
APPROACH  
CHART - ICAO**

**STAVROPOL, RUSSIA  
SHPAKOVSKOYE  
ILS X CAT I, LOC X RWY 07**

TOWER **120.900**



|                 |             |             |             |             |             |
|-----------------|-------------|-------------|-------------|-------------|-------------|
| DME IOP         | 9.6         | 8.0         | 6.0         | 4.0         | 2.0         |
| ALTITUDE/HEIGHT | 3300'/(555) | 2990'/(460) | 2630'/(350) | 2270'/(240) | 1910'/(130) |



|                      |              |   |   |                    |                    |
|----------------------|--------------|---|---|--------------------|--------------------|
| OCA(H)               |              | A | B | C                  | D                  |
| Straight-in Approach | CAT I        |   |   | 1673' (187') (57)  | 1683' (198') (60)  |
|                      | LOC With SDF |   |   | 1810' (320') (100) | 1810' (320') (100) |
|                      | LOC WO SDF   |   |   | 1980' (500') (155) | 1980' (500') (155) |
| Circling             |              |   |   | 2150' (670') (205) | 2270' (780') (240) |

**TRANSITION LEVEL:**  
 - FL060 when QNH is 1013 hPa (760mm mercury column) or above;  
 - FL070 when QNH is 977 hPa (733mm mercury column) or above, but less than 1013 hPa (760mm mercury column);  
 - FL080 when QNH is less than 977 hPa (733mm mercury column).  
**WARNING:**  
 1. MAPt at LMM O. Timing not authorized for defining MAPt.  
 2. ILS DME IOP reads zero at RWY 07 THR.

|                 |        |     |     |     |     |     |     |     |      |      |
|-----------------|--------|-----|-----|-----|-----|-----|-----|-----|------|------|
| GROUND SPEED    | km/h   | 150 | 180 | 210 | 240 | 270 | 300 | 330 | 360  | 390  |
| RATE OF DESCENT | m/s    | 2.3 | 2.8 | 3.2 | 3.7 | 4.1 | 4.6 | 5.1 | 5.5  | 6.0  |
|                 | ft/min | 451 | 541 | 632 | 722 | 812 | 902 | 992 | 1082 | 1173 |

CHANGE: Limiting bearing line withdrawn, URR713