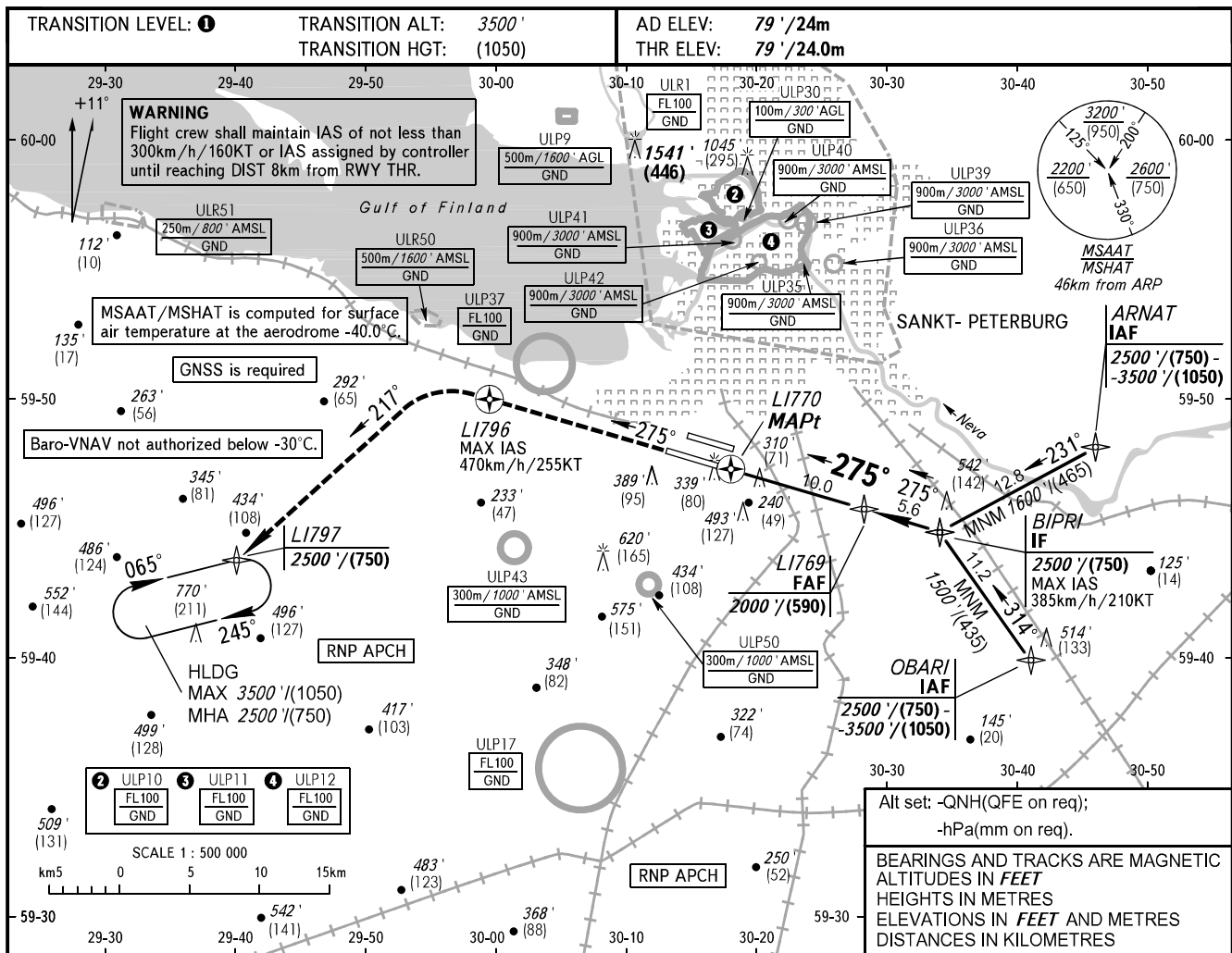


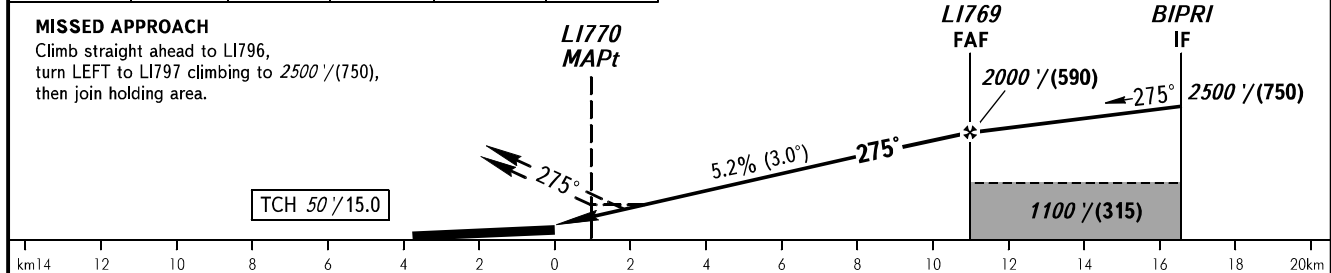
**INSTRUMENT
APPROACH
CHART - ICAO**

RADAR **120.300**
TOWER **118.700**

**SANKT-PETERBURG, RUSSIA
PULKOVO
RNP Z RWY 28L**



DIST to L1770	2.0	4.0	6.0	8.0	10.0
ALT/HGTT	640' / (170)	990' / (280)	1330' / (380)	1670' / (485)	2000' / (590)



OCA(H)		A	B	C	D
Straight-in	LNAV/VNAV	460' (390') (120)	470' (400') (120)	480' (410') (125)	480' (410') (125)
	LNAV	500' (430') (130)	510' (440') (135)	540' (470') (145)	560' (490') (150)
Circling		690' (610') (190)	790' (710') (220)	890' (810') (250)	1020' (940') (290)

GROUND SPEED	km/h	150	180	210	240	270	300	330	360	390
	kt	80	100	110	130	145	160	180	195	210
RATE OF DESCENT	m/s	2.2	2.6	3.1	3.5	3.9	4.4	4.8	5.2	5.7
	ft/min	430	516	602	688	774	860	946	1032	1118

1 TRANSITION LEVEL:
- FL050 when QNH is 996 hPa (747mm mercury column) or above;
- FL060 when QNH is 960 hPa (720mm mercury column) or above, but less than 996 hPa (747mm mercury column);
- FL070 when QNH is less than 960 hPa (720mm mercury column).

WARNING
Visual manoeuvring to the north of the AD is PROHIBITED.

NOTE:
1. Level flight segment is not AVBL before FAF.
2. MAPt at L1770. Timing not authorized for defining MAPt.