

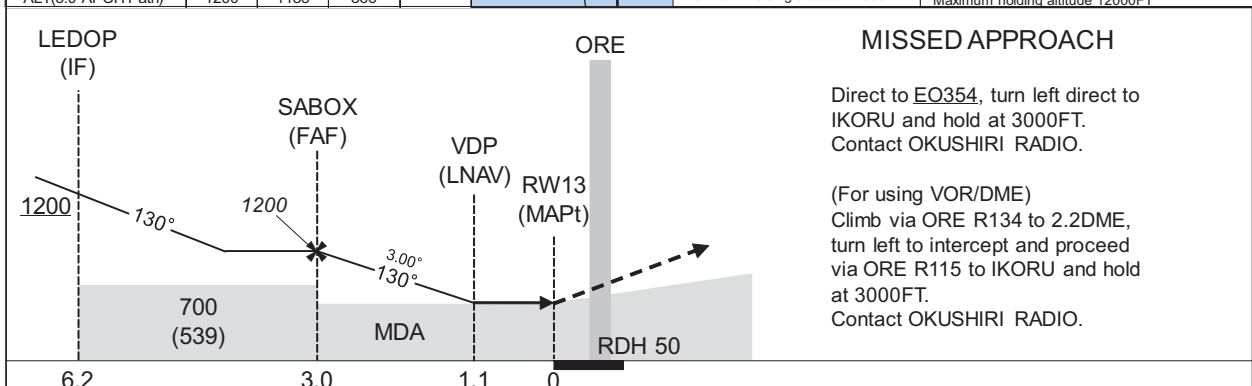
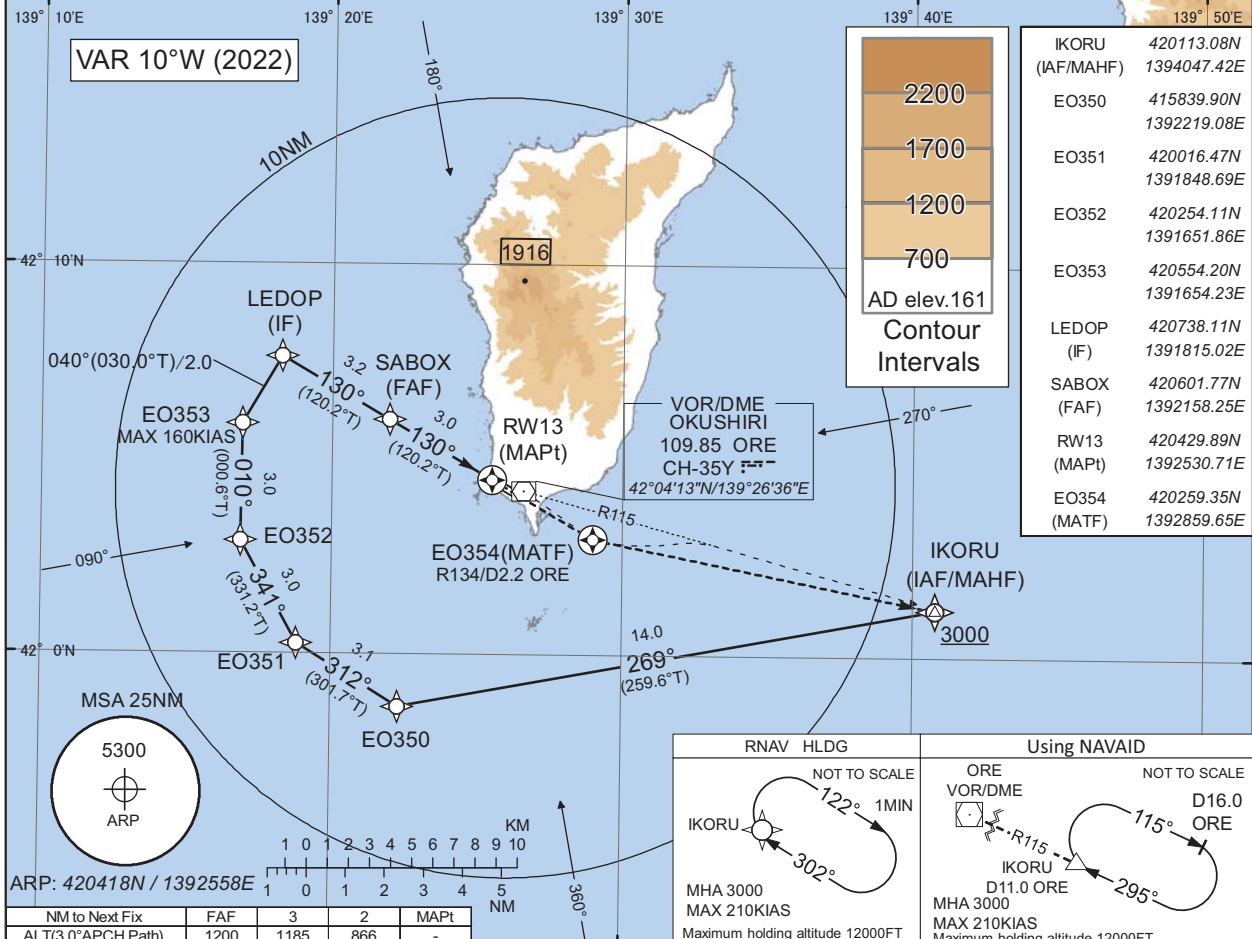
INSTRUMENT APPROACH CHART

RJEO / OKUSHIRI

RNP RWY13

TOKYO CONTROL 119.3 - 276.5 134.25 - 260.4	RNP APCH MSAS CH81047 M13A	OKUSHIRI RADIO 122.7 AFIS provided by New Chitose Airport Office	NO RADAR
--	----------------------------------	---	----------

Baro-VNAV not authorized below -15°C



MINIMA	THR elev. 180		AD elev. 161					
CAT	LPV		LNAV/VNAV		LNAV		CIRCLING	
	DA(H)	CMV	DA(H)	CMV	MDA(H)	CMV	MDA(H)	VIS
A	430(250)	1500	560(380)	1500	560(399)	1500	600(439)	1600
B	437(257)						620(459)	
C	447(267)	1600	-	1800	-	1800	-	2400
D	-	-	-	-	-	-	-	-

Circling to SOUTH side of RWY only.

CHANGE : ATC call sign.

INSTRUMENT APPROACH CHART

RJEO / OKUSHIRI

RNP RWY13

FAS DATA BLOCK

Operation type	0	LTP/FTP ellipsoidal height	+00878
SBAS service provider identifier	2	FPAP Latitude	420402.2720N
Airport identifier	RJEO	FPAP Longitude	1392634.4865E
Runway	13	Threshold Crossing Height	00015.0
Approach performance designator	0	TCH units selector	1
Route indicator		Glide path angle	03.00
Reference path data selector	0	Course width at threshold	105.00
Reference path ID	M13A	∠ length offset	0192
LTP/FTP latitude	420429.8670N	HAL	40.0
LTP/FTP longitude	1392530.7315E	VAL	50.0
CRC remainder	D63254BC		

Required additional data

LTP/FTP orthometric height	54.8
----------------------------	------

CHANGE : Description of FAS DATA BLOCK ITEM(CRC remainder).