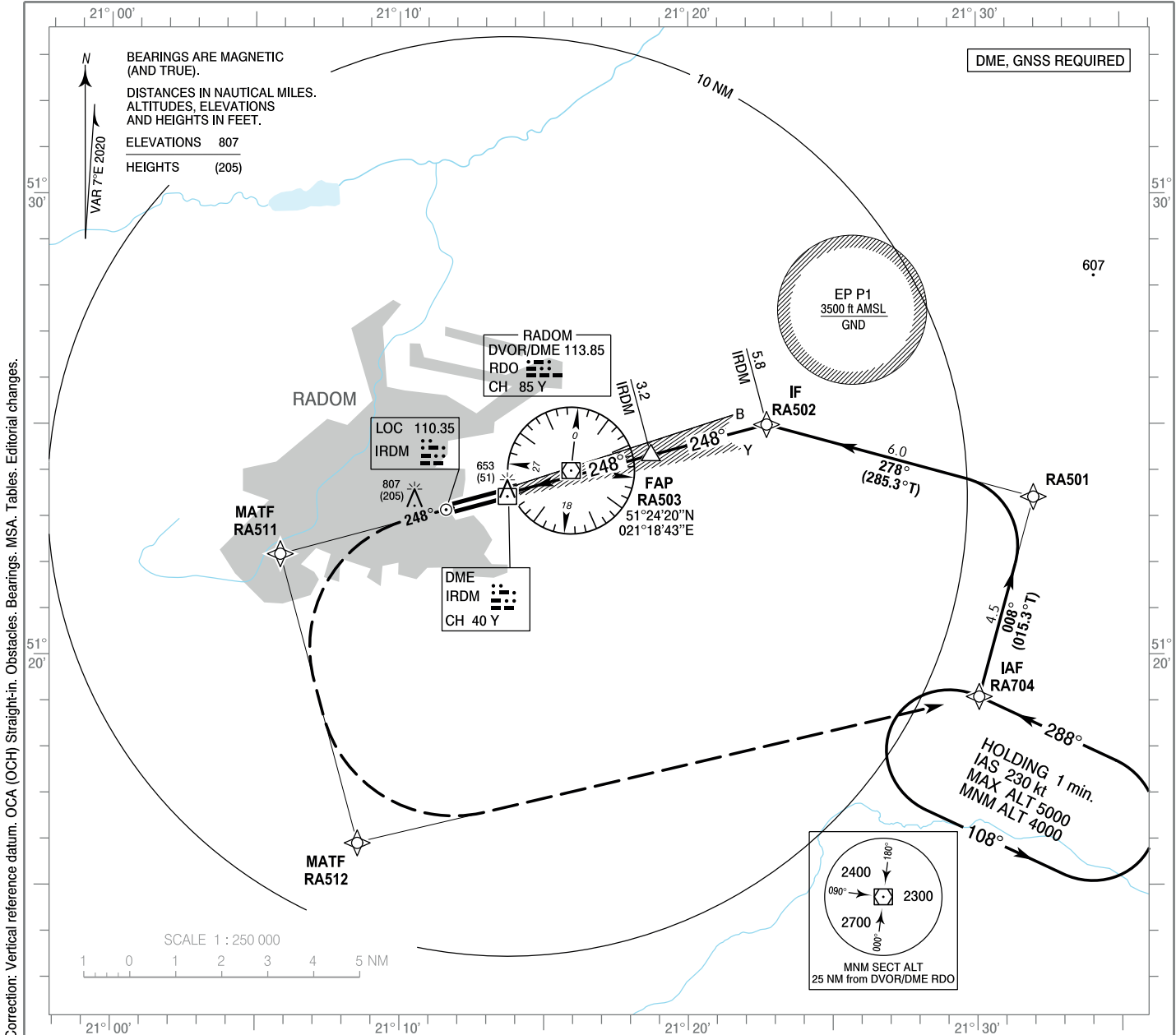


**INSTRUMENT  
APPROACH  
CHART - ICAO**

AERODROME ELEV 625 ft  
THR RWY 25 ELEV 602 ft  
HEIGHTS RELATED TO THR RWY 25

Radom TOWER	118.430
MIL Radom APPROACH	128.675
MIL Radom TOWER	118.430

**Warszawa - Radom  
ILS  
RWY 25 (CAT A/B/C/D)**

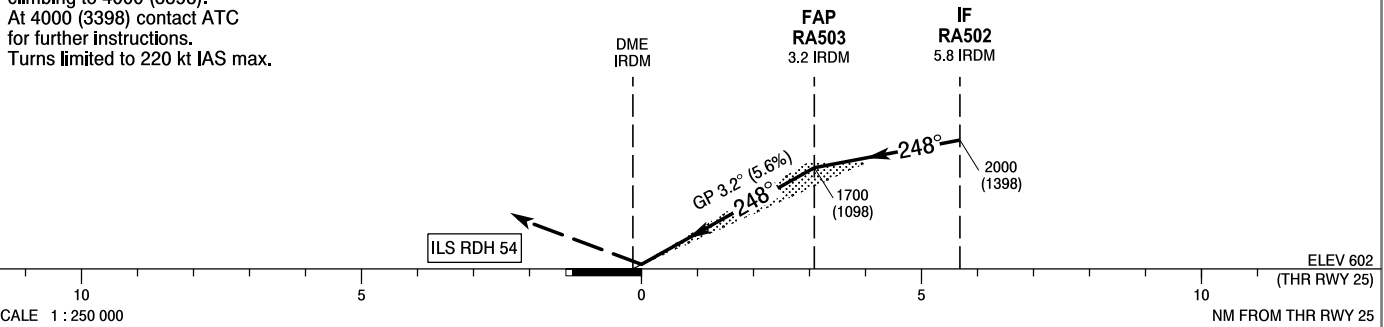


Correction: Vertical reference datum: OCA (OCH) Straight-in. Obstacles: Bearings: MSA. Tables: Editorial changes.

**MISSED APPROACH**

Climb on course 248° to RA511, then turn left to RA512 and continue to RA704 climbing to 4000 (3398). At 4000 (3398) contact ATC for further instructions. Turns limited to 220 kt IAS max.

TRANSITION ALTITUDE 6500



OCA (OCH)					Distance FAP - RW25 3.1 NM								
Cat. of ACFT	Cat. I	A	B	C	D	Speed	kt	80	100	120	140	160	180
		Straight-in		783 (181)	795 (193)	803 (201)	814 (212)	Time	min : s	2 : 19	1 : 51	1 : 33	1 : 19
						Rate of descent	ft / min	450	570	680	790	910	1020
Circling (OCH AAL)*					1110 (485)	1120 (495)	1440 (815)	1440 (815)	Final approach distance/altitude (height)				
					Distance	3	2	1					
*Circling south of aerodrome only.					Altitude (height)	1671 (1069)	1331 (729)	992 (390)					

Warszawa-Radom  
 ILS  
 RWY 25 (CAT A/B/C/D)

EPRA RNP RWY 25 INITIAL TRANSITION FROM RA704

SEQUENCE NUMBER	PATH TERMINATOR	WAYPOINT IDENTIFIER	FLY - OVER	COURSE/TRACK °M (°T)	DISTANCE (NM)	TURN DIRECTION	ALTITUDE	SPEED (kt)	VPA/TCH	NAV SPEC
001	IF	RA704	-	-	-	-	+4000 ft	-220	-	RNP 1
002	TF	RA501	-	008 (015.28)	4.50	-	+3000 ft	-220	-	RNP 1
003	TF	RA502	-	278 (285.31)	6.00	L	+2000 ft	-185	-	RNP 1

EPRA RNP RWY 25 MISSED APPROACH

SEQUENCE NUMBER	PATH TERMINATOR	WAYPOINT IDENTIFIER	FLY - OVER	COURSE/TRACK °M (°T)	DISTANCE (NM)	TURN DIRECTION	ALTITUDE	SPEED (kt)	VPA/TCH	NAV SPEC
001	-	RW25	-	-	-	-	-	-	-	RNP 1
002	CF	RA511	-	248 (255.07)	5.24	L	-	-220	-	RNP 1
003	TF	RA512	-	158 (164.97)	6.50	L	-	-220	-	RNP 1
004	TF	RA704	-	070 (076.64)	13.88	-	+4000 ft	-220	-	RNP 1

WAYPOINT IDENTIFIER	COORDINATES		FIX FORMATION	
RA704 (IAF)	51 19 05.1 N	021 30 04.4 E	-	-
RA501	51 23 25.2 N	021 31 58.0 E	-	-
RA502 (IF)	51 24 59.7 N	021 22 43.4 E	255.04° GEO (248° MAG) LOC IRDM	5.84 NM DME IRDM
RA503 (FAP)	51 24 19.8 N	021 18 42.5 E	255.04° GEO (248° MAG) LOC IRDM	3.24 NM DME IRDM
RW25	51 23 32.3 N	021 13 56.8 E	-	-
RA511 (MATF)	51 22 11.1 N	021 05 52.1 E	-	-
RA512 (MATF)	51 15 54.9 N	021 08 33.1 E	-	-