

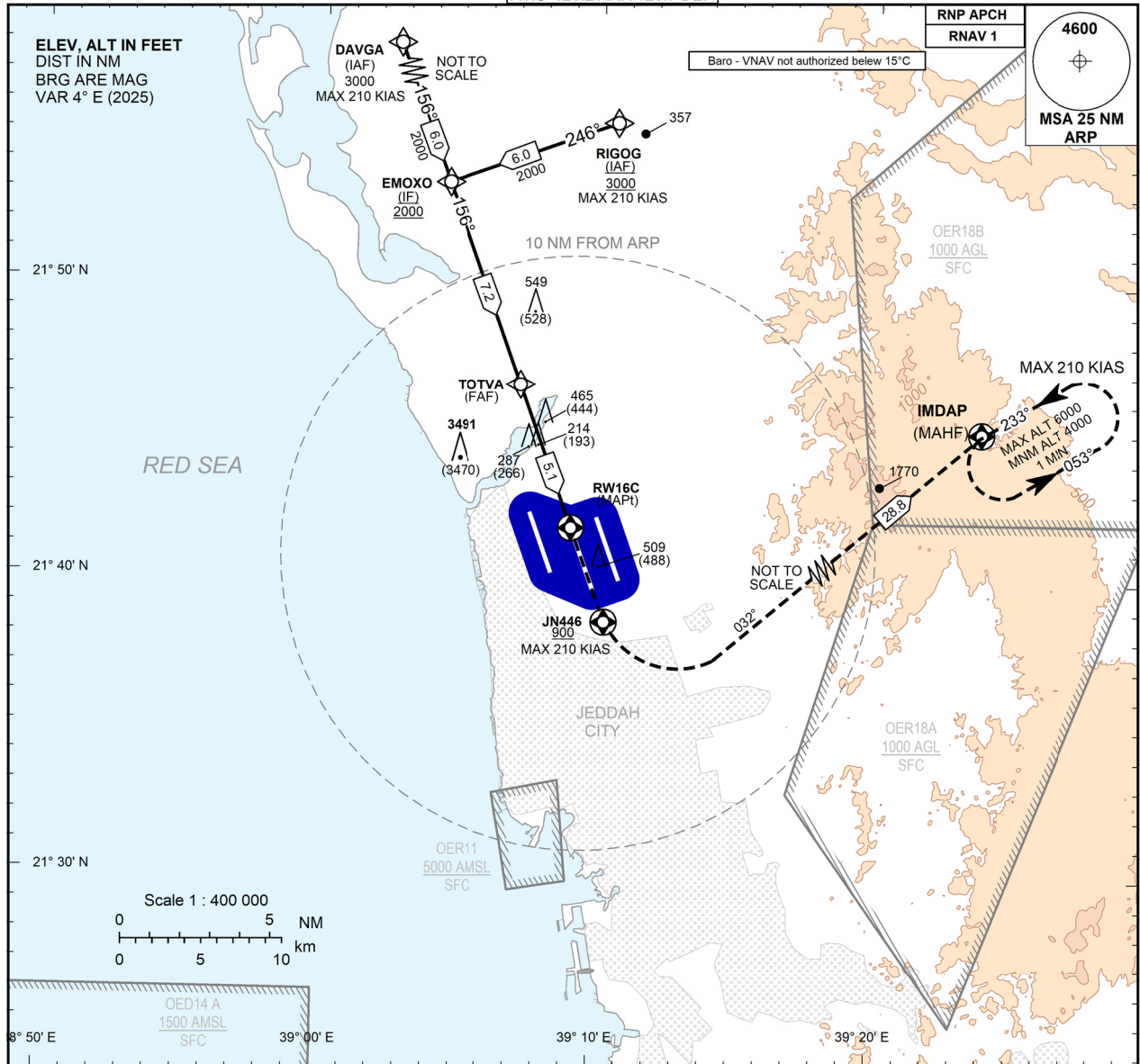
**INSTRUMENT
APPROACH
CHART - ICAO**

**AERODROME ELEV 50 FT
HEIGHTS RELATED TO
THR RWY 16C - ELEV 21 FT**

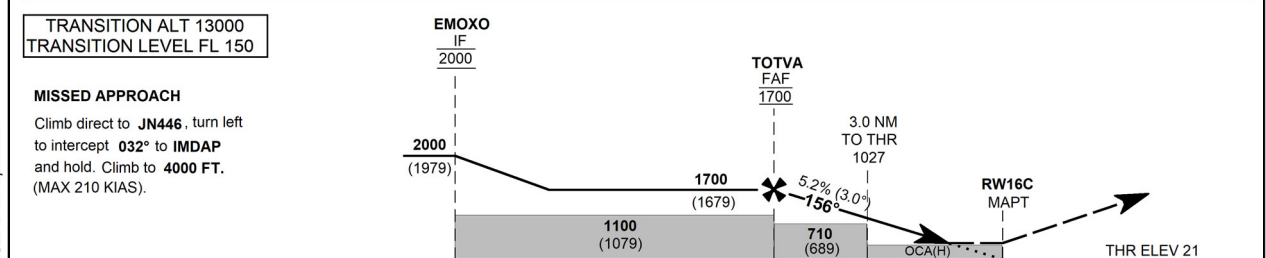
TWR 118.2(W) 118.3(W)
118.5(E) 124.3(E)
APP 123.8 124.0
UHF 345.6
ATIS 126.2 ARR 128.7 DEP

JEDDAH / King Abdulaziz Intl (OEJN)

RNP RWY 16C



5	4	3	2	RWY16C	DISTANCE FROM THR
1665 (1644)	1346 (1325)	1027 (1006)	708 (687)		ALTITUDE (HEIGHT)



TRANSITION ALT 13000 TRANSITION LEVEL FL 150		EMOXO IF 2000	TOTVA FAF 1700	3.0 NM TO THR 1027	RWY16C MAPT	THR ELEV 21 (THR RWY 16C)
MISSED APPROACH		Climb direct to JN446, turn left to intercept 032° to IMDAP and hold. Climb to 4000 FT. (MAX 210 KIAS).				

Straight-in Approach	LNAV/VNAV	ACFT CAT	A	B	C	D/DL	NOTE: NM to/from THR RWY 16C
		OCA(H)		440 (419)			
Circling	LNAV	RVR(m)		1200			Ground Speed FAF-MAPT 5.1 NM Rate of Descent 3.0° (5.2%)
		OCA(H)		570 (549)			
		RVR(m)		1800			Knots
		OCA(H)		NA			70
		VIS(m)					90
							110
							130
							150
							170
							190

- CIRCLING NOT AUTHORIZED
- RVR/VIS RELATED TO MDA (H) = OCA (H)

NO CIRCLING