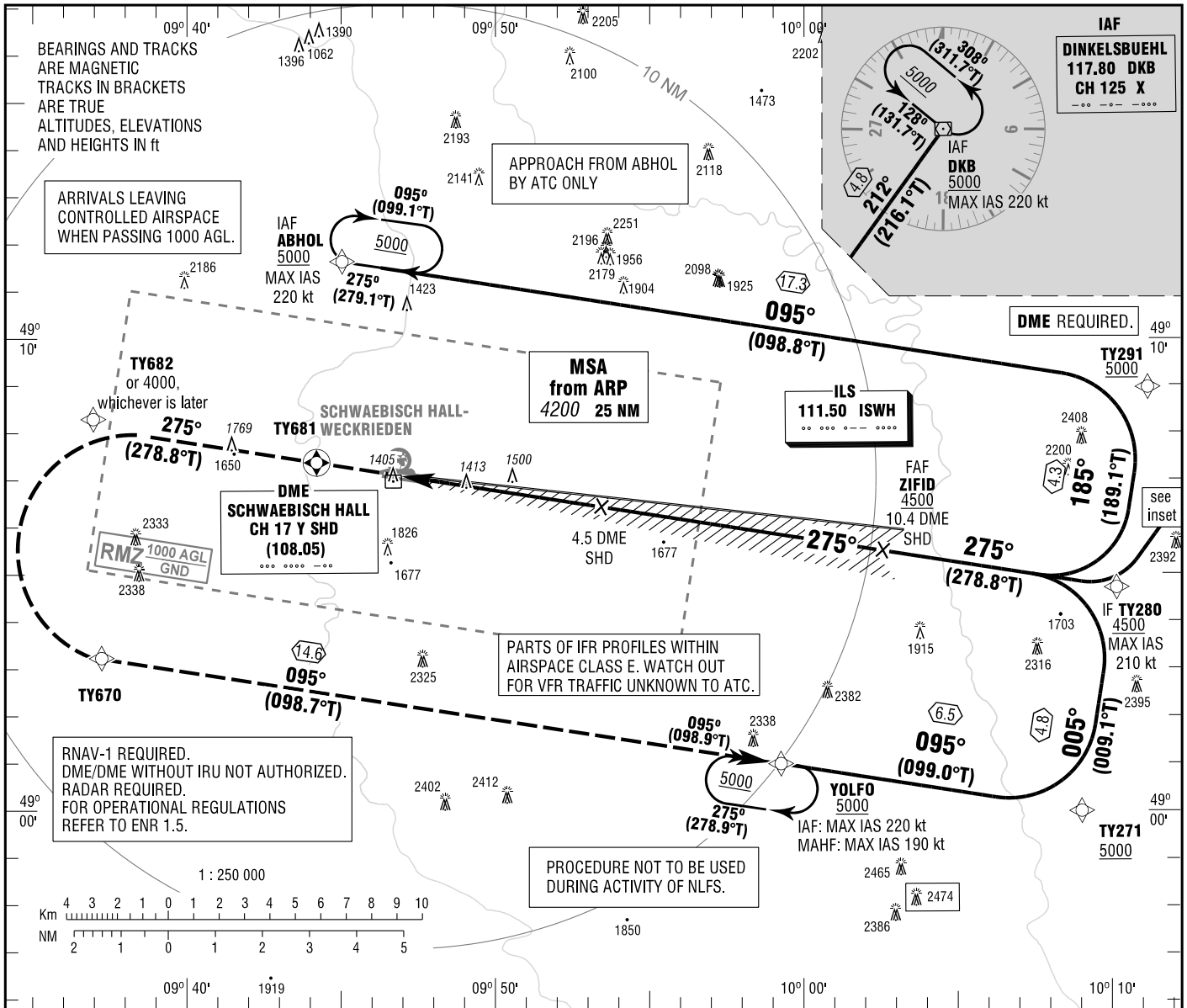


INSTRUMENT  
APPROACH  
CHART - ICAO

VAR 4° E  
ELEV 1310  
OCH RELATED TO  
THR 28 ELEV 1297

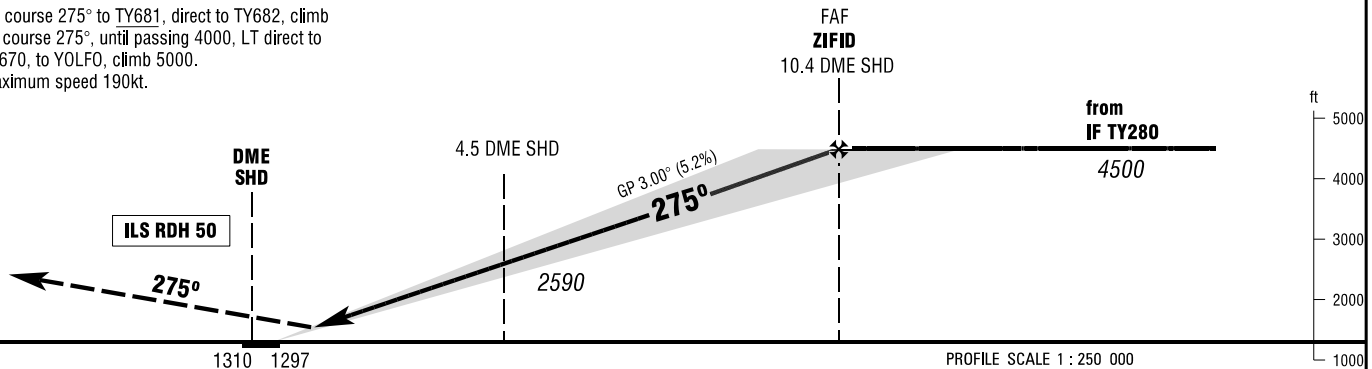
SCHWAEBISCH HALL ATIS 133.880  
LANGEN RADAR 125.050  
SCHWAEBISCH HALL INFORMATION 129.230

SCHWAEBISCH HALL  
ILS  
RWY 28



**MISSED APPROACH PROCEDURE**

On course 275° to TY681, direct to TY682, climb on course 275°, until passing 4000, LT direct to TY670, to YOLFO, climb 5000. Maximum speed 190kt.



OCA (OCH)	A	B	C
ILS-DME CAT I	1494 (197)	1506 (209)	1514 (217)
CIRCLING* OCH RELATED TO AD ELEV	1770 (460)	1810 (500)	2170 (860)

DME SHD	2	3	4	5	6	7	8	9
DIST THR	1.5	2.5	3.5	4.5	5.5	6.5	7.5	8.5
ALTITUDE	1810	2130	2450	2770	3090	3410	3730	4050

**LOC-DME:** Timing not authorized for defining the MAPt.

GS	kt	80	100	120	140
ZIFID - THR (9.9 NM)	MIN:SEC	7:25	5:56	4:57	4:15
Rate of descent (5.2%)	ft / MIN	420	530	640	740

\*NORTH OF AERODROME ONLY.

Correction: DKB revised.