

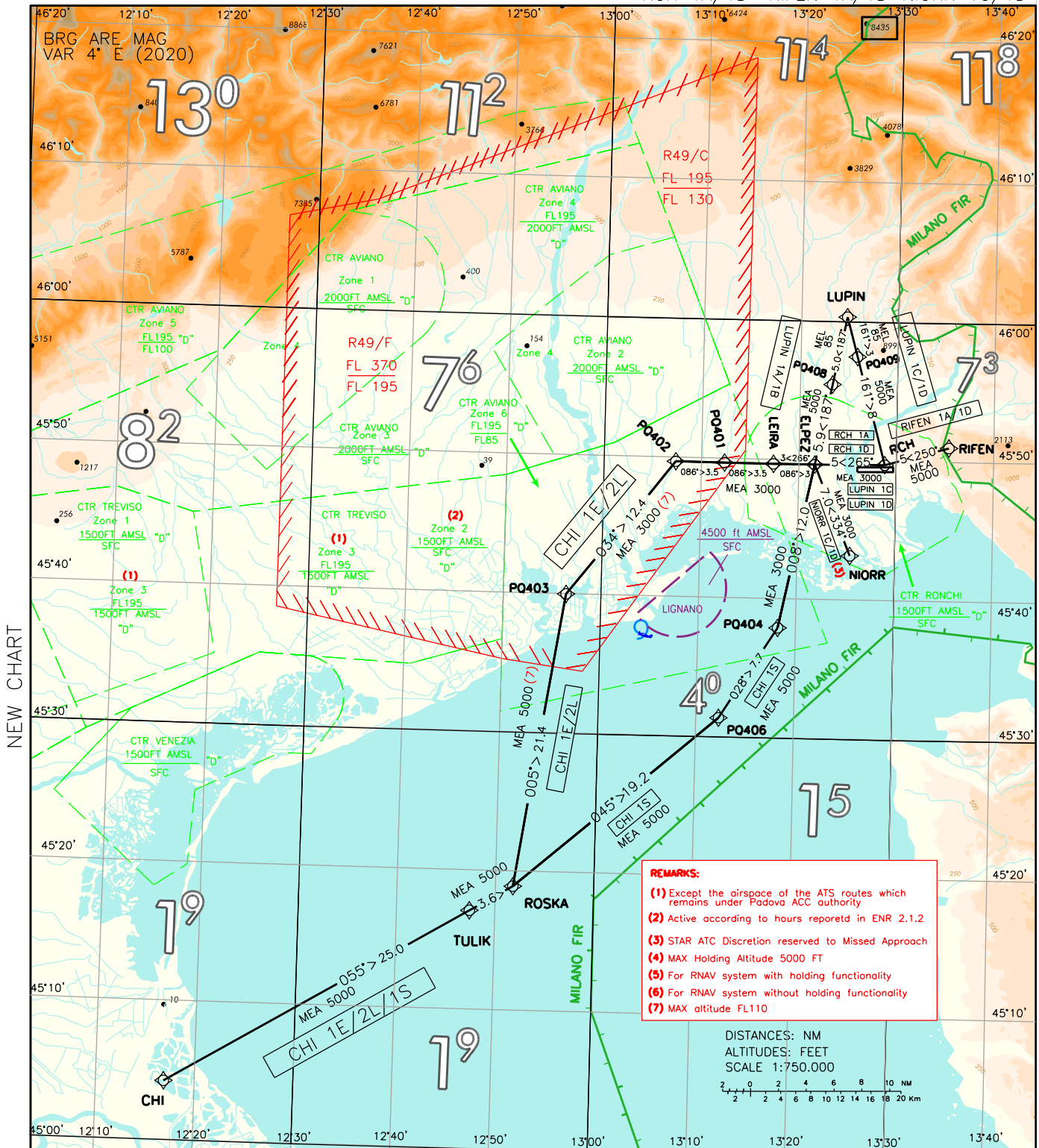
STANDARD ARRIVAL CHART -
INSTRUMENT (STAR) - ICAO

TRANSITION ALT
6000 FT

APP Padova Radar 119.175
TWR Ronchi TWR 130.205

TRIESTE/RONCHI
DEI LEGIONARI (LIPQ)
RNAV 1

CHI 1E/2L/1S LUPIN 1A/1B/1C/1D
RCH 1A/1D RIFEN 1A/1D NIORR 1C/1D



REMARKS:

- (1) Except the airspace of the ATS routes which remains under Padova ACC authority
- (2) Active according to hours reported in ENR 2.1.2
- (3) STAR ATC Discretion reserved to Missed Approach
- (4) MAX Holding Altitude 5000 FT
- (5) For RNAV system with holding functionality
- (6) For RNAV system without holding functionality
- (7) MAX altitude FL110

DISTANCES: NM
ALTITUDES: FEET
SCALE 1:750.000

MIN SECT ALT 25NM ARP 	Holding Procedures			AIRSPACE CLASSIFICATION See AIP ENR 1.4
	LEIRA Holding Procedure NOT TO SCALE 	ELPEZ RNAV Holding Procedure NOT TO SCALE 	ELPEZ VOR/DME Holding Procedure NOT TO SCALE 	LEGEND ——— STAR - - - ATC Discretion ——— FIR BOUNDARY - - - C T R