

# HI-ILS or LOC Z RWY 32

LOC I-RIV <b>110.1</b>	APCH CRS <b>315°</b>	Rwy ldg <b>13,302</b> TDZE <b>1497</b> Arpt Elev <b>1536</b>	AL-348 [USAF]	MARCH ARB (KRIV)
---------------------------	-------------------------	--	---------------	------------------

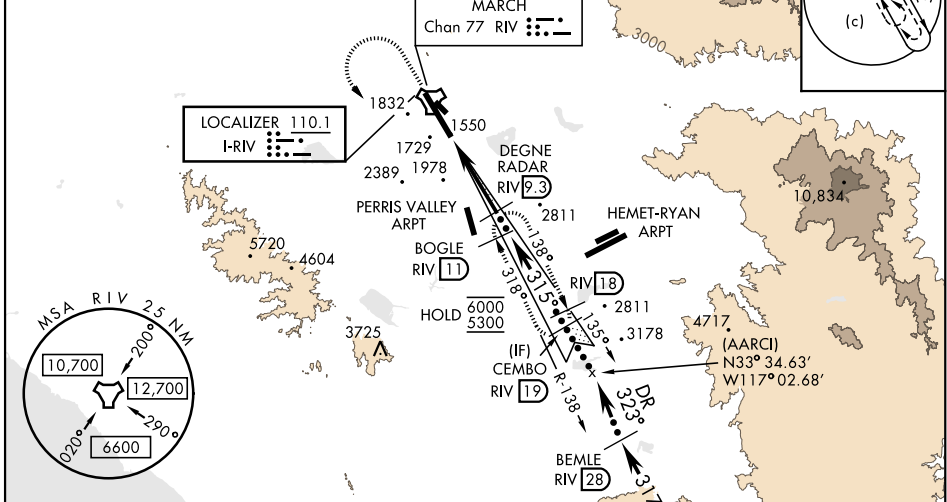
▼ \* When ALS inop, increase CAT CDE RVR to 40 and vis to ¾ mile.  
 \*\* When ALS inop, increase CAT CDE RVR to 60 and vis to 1 ½ mile.  
 \*\*\* Circling not authorized NE of Rwy 14-32. Rapid rising terrain.

ALSF-1 MISSED APPROACH: Climb to 5300 direct RIV TACAN, then turn left to intercept RIV R-138 direct BOGLE, continue climb in hold to 5300.

ATIS <b>134.75 239.05</b>	APP/DEP CON ★ <b>133.5 306.975</b>	TOWER <b>127.65 253.5</b>	GND CON <b>121.75 335.8</b>	CLNC DEL <b>127.775 268.7</b>
------------------------------	---------------------------------------	------------------------------	--------------------------------	----------------------------------

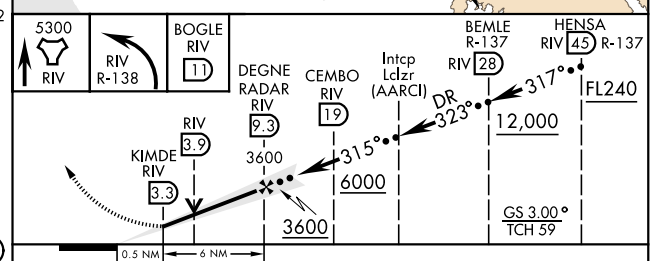
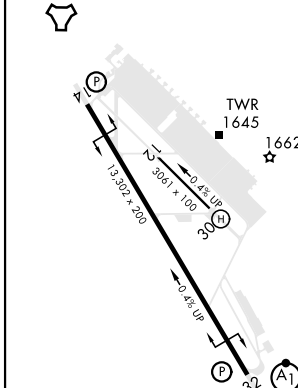
CAUTION: Ultralights, balloons, parachutists in vicinity of Perris Valley Arpt.

† Missed approach requires use of RNAV or ATC RADAR monitoring.



EMERG SAFE ALT 100 NM 13,700 FROM "RIV" TACAN

ELEV 1536	TDZE 1497
-----------	-----------



	FAF to MAP 5.9 NM					C	D	E
S-ILS 32 *	120	140	160	180	200	1697/24	200	(200-½)
S-LOC 32 **	2:57	2:32	2:13	1:58	1:46	1900/40	403	(400-¾)
Min:Sec	2:57	2:32	2:13	1:58	1:46	2300-2¼ 764 (800-2¼)	2440-3 904 (1000-3)	2840-3 1304 (1400-3)
<b>C</b> CIRCLING						2300-2¼ 764 (800-2¼)	2440-3 904 (1000-3)	2840-3 1304 (1400-3)

# HI-ILS or LOC Z RWY 32

SW-3, 20 MAR 2025 to 17 APR 2025

SW-3, 20 MAR 2025 to 17 APR 2025