

STANDARD DEPARTURE CHART -INSTRUMENT

RJFU / NAGASAKI

SID

WEST SEVEN DEPARTURE

RWY 14: Climb RWY HDG to 500FT, climb via OLE R144 to 1800FT,  
turn right HDG292° to intercept and proceed via OLE R247...

RWY 32: Climb RWY HDG 1500FT, turn left HDG202° to intercept  
and proceed via OLE R247...

... to SUMOU.

Cross SUMOU at or above 4000FT.

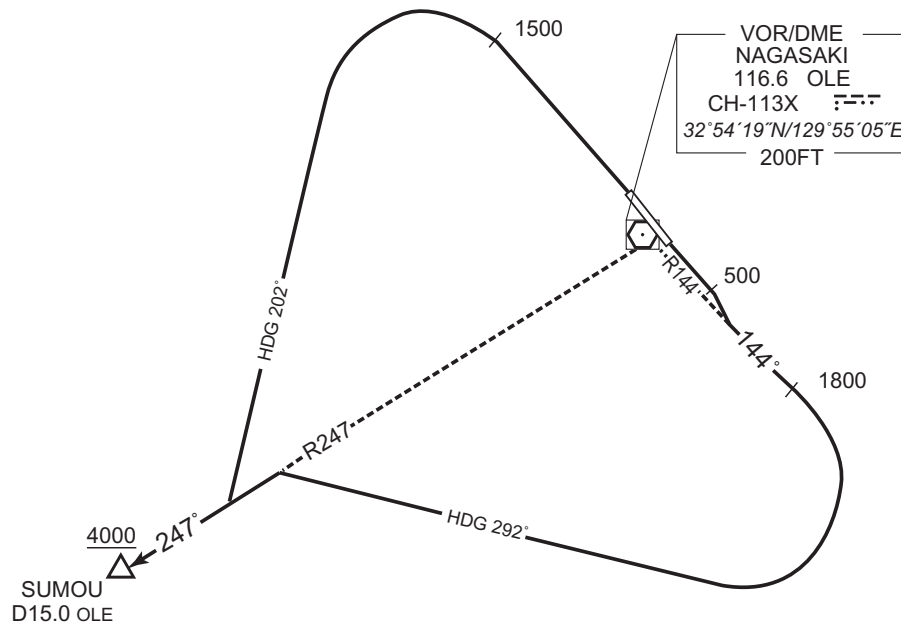
Note RWY 14: 5.0% climb gradient required up to 1800FT.

OBST ALT 854FT located at 3.4NM 170° FM end of RWY14.

RWY 32: 5.0% climb gradient required up to 1500FT.

OBST ALT 1969FT located at 8.0NM 272° FM end of RWY32.

CHANGE : Description of PROC name.



STANDARD DEPARTURE CHART -INSTRUMENT

RJFU / NAGASAKI

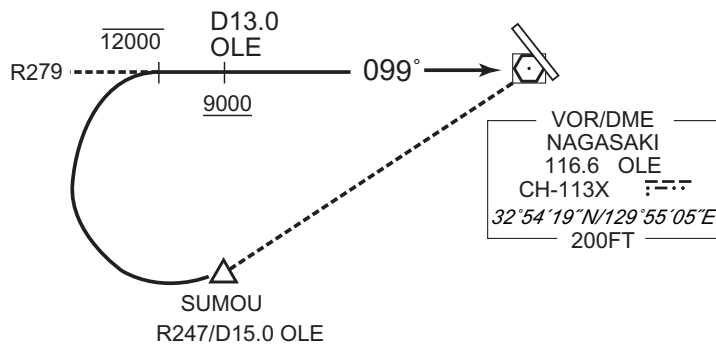
TRANSITION

OMURA TRANSITION

From over SUMOU, turn right to intercept and proceed via OLE R279 to OLE VOR/DME.

Maintain 12000FT or below until intercepting OLE R279.

Cross OLE R279/13.0DME at or above 9000FT.

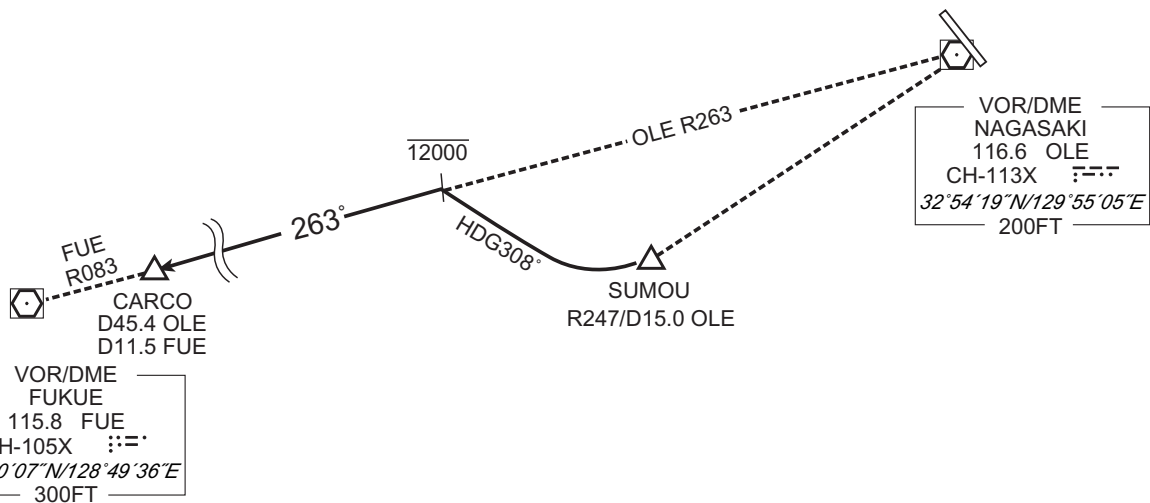


CARCO TRANSITION

From over SUMOU, turn right HDG308° to intercept and proceed via OLE R263 /FUE R083 to CARCO.

Maintain 12000FT or below until intercepting OLE R263.

Maintain 12000FT or below until intercepting OLE R263.



CHANGE : Bearing FM FUE.