

SW-3, 20 MAR 2025 to 17 APR 2025

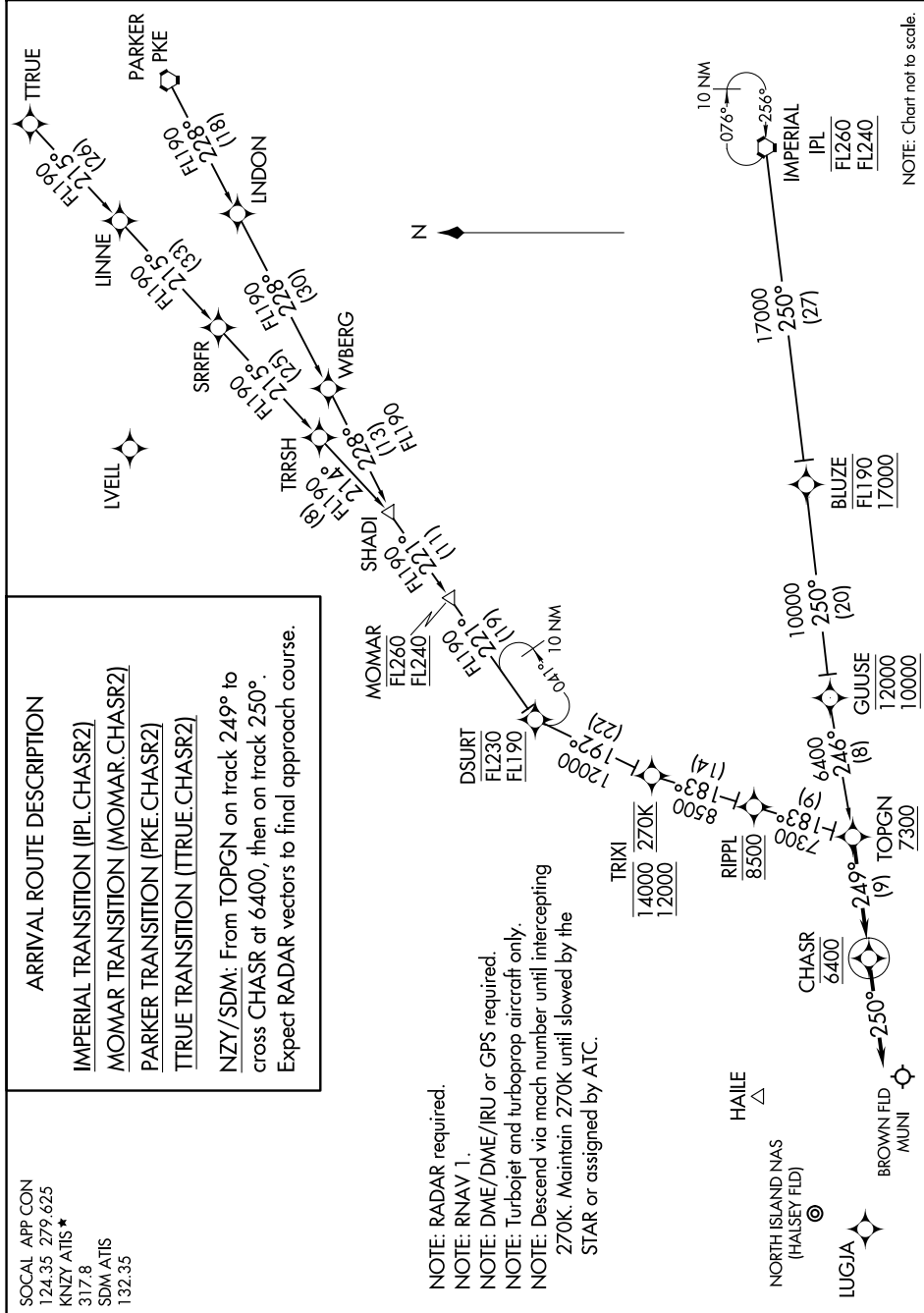
ARRIVAL ROUTE DESCRIPTION

- IMPERIAL TRANSITION (IPL.CHASR2)
- MOMAR TRANSITION (MOMAR.CHASR2)
- PARKER TRANSITION (PKE.CHASR2)
- TTRUE TRANSITION (TTRUE.CHASR2)

NZY/SDM: From TOPGN on track 249° to cross CHASR at 6400, then on track 250°. Expect RADAR vectors to final approach course.

SOCAL APP CON
124.35 279.625
KNZY ATIS ★
317.8
SDM ATIS
132.35

- NOTE: RADAR required.
- NOTE: RNAV 1.
- NOTE: DME/DME/IRU or GPS required.
- NOTE: Turbojet and turboprop aircraft only.
- NOTE: Descend via mach number until intercepting 270K. Maintain 270K until slowed by the STAR or assigned by ATC.



NOTE: Chart not to scale.

SW-3, 20 MAR 2025 to 17 APR 2025