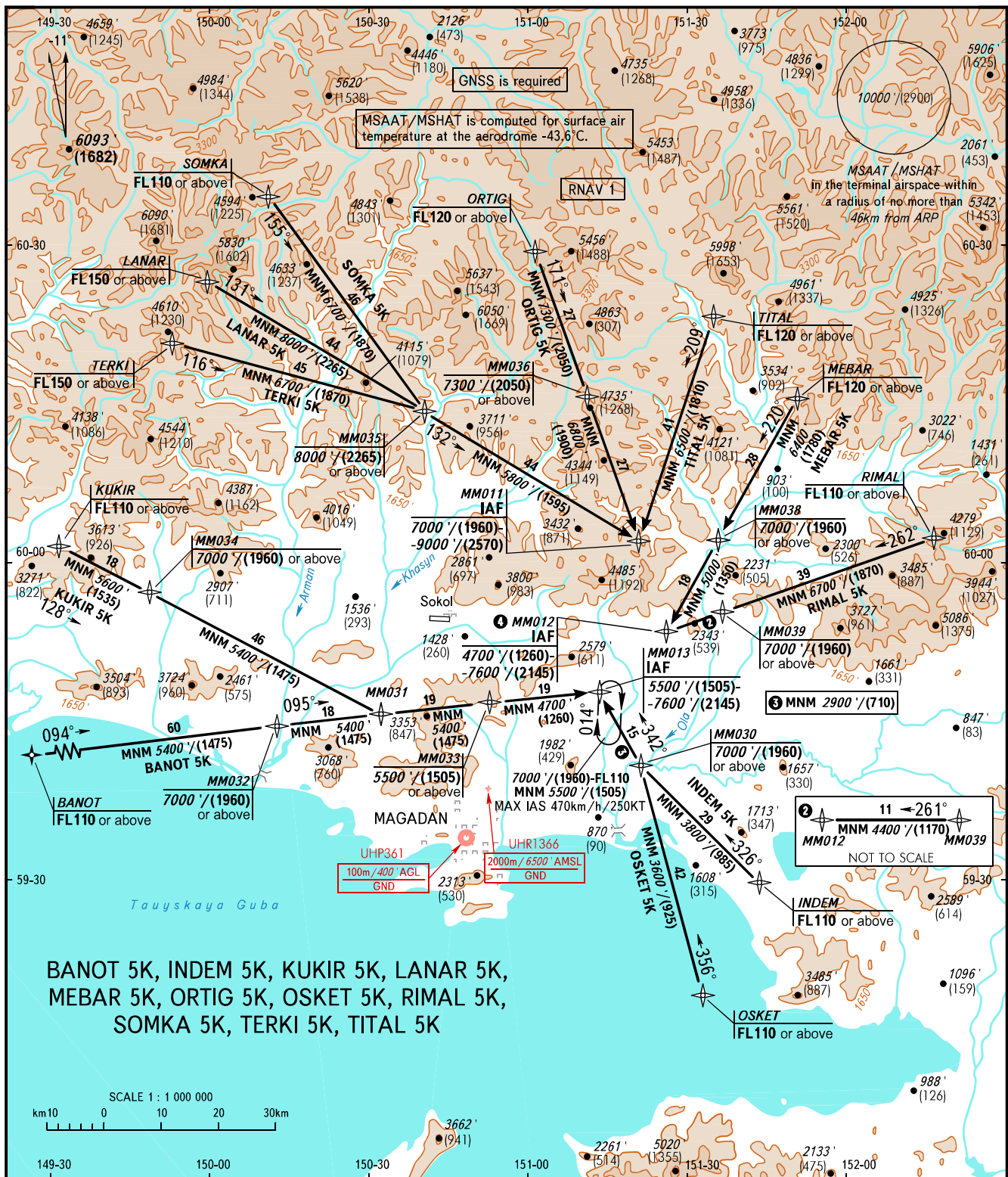


STANDARD ARRIVAL CHART  
INSTRUMENT (STAR) - ICAO

TRANSITION  
LEVEL: 1

MAGADAN, RUSSIA  
SOKOL  
RNAV RWY 28



BANOT 5K, INDEM 5K, KUKIR 5K, LANAR 5K,  
MEBAR 5K, ORTIG 5K, OSKET 5K, RIMAL 5K,  
SOMKA 5K, TERKI 5K, TITAL 5K

APPROACH TOWER 119.300  
120.800

- 1 TRANSITION LEVEL:
- FL110 when QNH is 1013 hPa (760mm mercury column) or above;
  - FL120 when QNH is 977 hPa (733mm mercury column) or above but less than 1013 hPa (760mm mercury column);
  - FL130 when QNH is less than 977 hPa (733mm mercury column).

2 WARNING  
ALT/HGT at IAF MM012  
5000'/(1350)-7600'/(2145) for MEBAR 5K.

BEARINGS AND TRACKS ARE MAGNETIC  
ALTITUDES IN FEET  
HEIGHTS IN METRES  
ELEVATIONS IN FEET AND METRES  
DISTANCES IN KILOMETRES

Alt set: -QNH(QFE on req);  
-hPa(mm on req).