

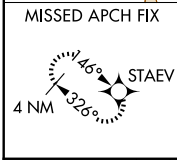
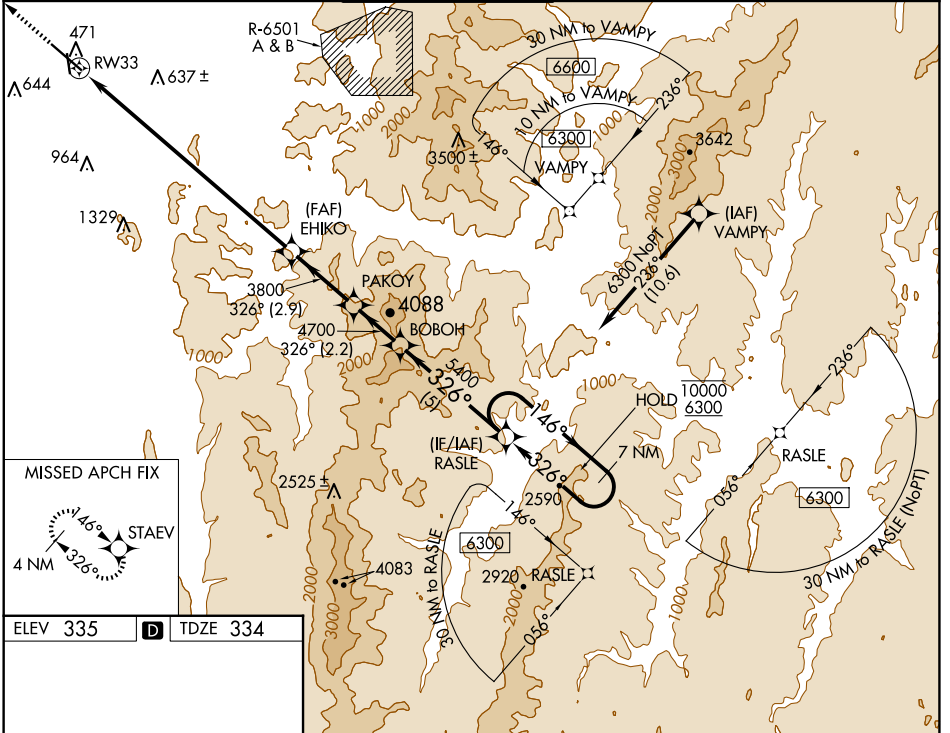
WAAS CH 65812 W33A	APP CRS 326°	Rwy Idg 7819 TDZE 334 Apt Elev 335
--	------------------------	---

RNAV (GPS) Z RWY 33

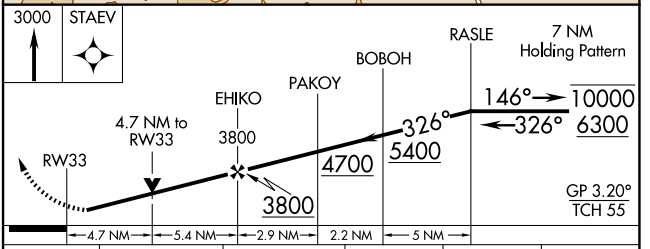
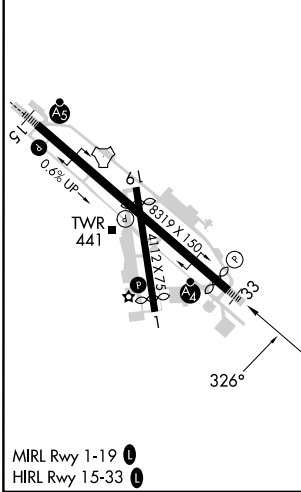
PATRICK LEAHY BURLINGTON INTL (BT'V)

RNP APCH - GPS.	MALSF	MISSED APPROACH: Climb to 3000 direct STAEV and hold.
<p>Rwy 33 helicopter visibility reduction below RVR 4000 NA. Inop table does not apply. For uncompensated Baro-VNAV systems, LNAV/VNAV NA below -25°C or above 37°C.</p>		

ATIS 123.8 269.9	BURLINGTON APP CON * 121.1 278.8	BURLINGTON TOWER * 118.3 (CTAF) 257.8	GND CON 126.3 348.6	CLNC DEL 119.15	UNICOM 122.95
----------------------------	--	---	-------------------------------	---------------------------	-------------------------



ELEV 335	D	TDZE 334
----------	----------	----------



CATEGORY	A	B	C	D	E
LPV DA		584/40	250 (300-¾)		
LNAV/VNAV DA		1782-5	1448 (1500-5)		
LNAV MDA	2000-1¼	1666 (1700-1¼)		2000-3	1666 (1700-3)

NE-1, 20 MAR 2025 to 17 APR 2025

NE-1, 20 MAR 2025 to 17 APR 2025