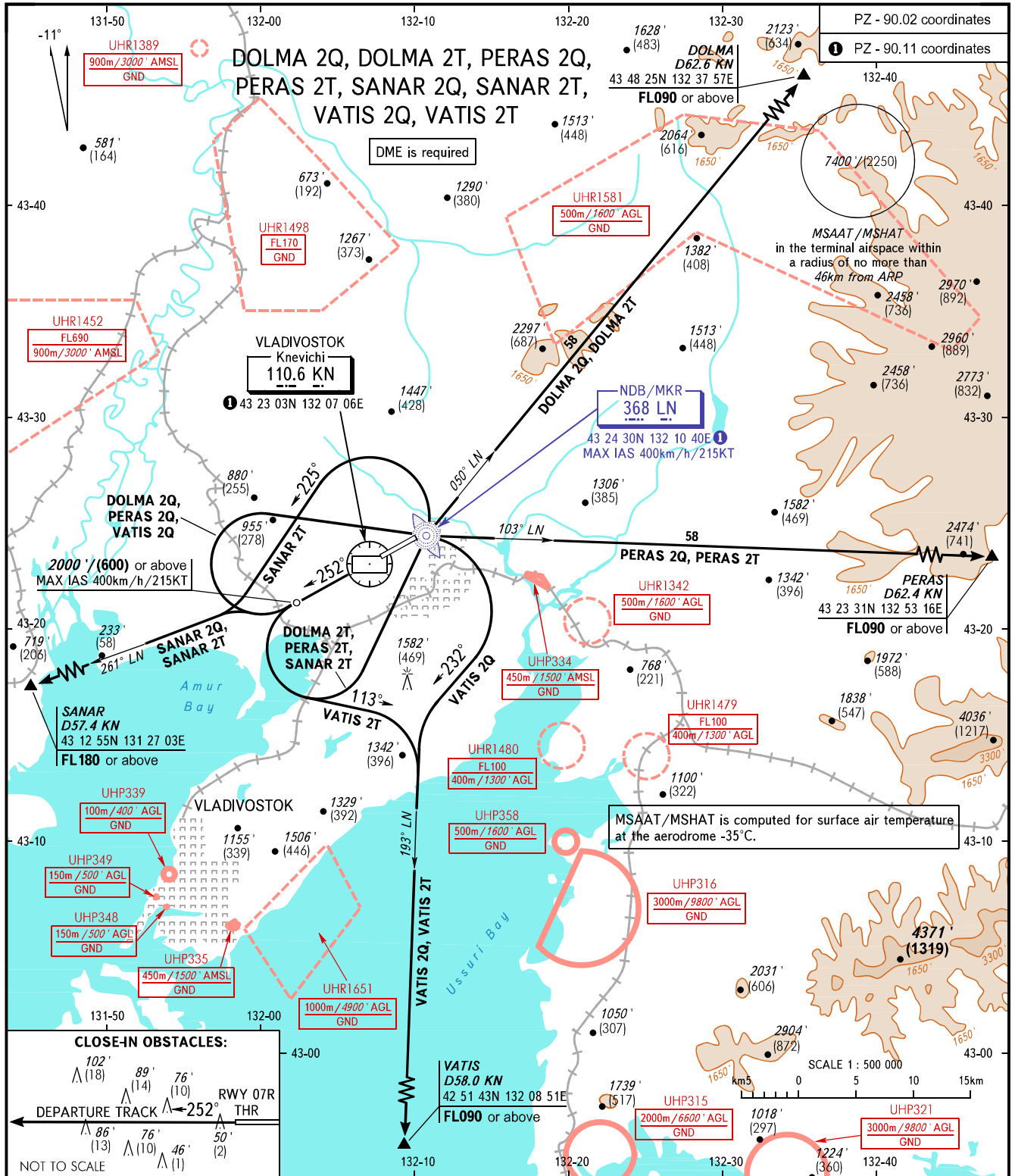


STANDARD DEPARTURE CHART
INSTRUMENT (SID) - ICAO

TRANSITION ALT: **8000'**
TRANSITION HGT: **(2430)**

VLADIVOSTOK, RUSSIA
KNEVICH I
RWY 25L



VLADIVOSTOK START	119.500	MINIMUM CLIMB GRADIENTS (due to airspace structure):
VLADIVOSTOK RADAR	123.400	DOLMA 2Q, DOLMA 2T, PERAS 2Q, PERAS 2T: 5.5% up to 3300'/(995);
		SANAR 2Q: 11.5% up to FL180 (5.5% up to 6000'/(1820) by arrangement with ATS unit);
		SANAR 2T: 5.7% up to FL180;
		VATIS 2Q: 5.5% up to 3300'/(995) (7.8% up to FL110, when UHR1480 is active);
		VATIS 2T: 5.5% up to 3300'/(995) (8.8% up to 6300'/(1910), when UHR1651 is active).

BEARINGS AND TRACKS ARE MAGNETIC
ALTITUDES IN FEET
HEIGHTS IN METRES
ELEVATIONS IN FEET AND METRES
DISTANCES IN KILOMETRES

Alt set: -QNH(QFE on req);
-hPa(mm on req).

WARNING:
1. Turn before passing DER is PROHIBITED.
2. Close-in obstacles are AVBL.